

2.E2A2
1913

EAST PENNSYLVANIA

• • **CONFERENCE** • •

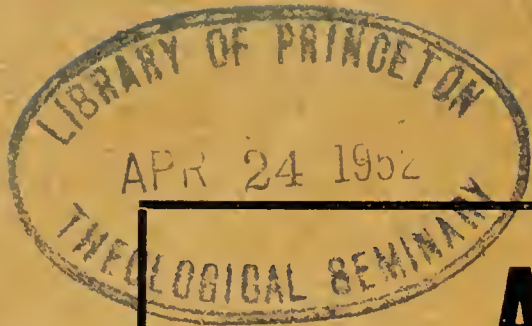


**UNITED BRETHREN
IN CHRIST**

1913

BX9878
.2.E2A2
1913

**One Hundred and Fourteenth
Annual Session**



ATTENTION!

“A Baltimore Life Insurance Policy”



GUARANTEES

(In event of your death)

“PROVISION” for loved ones.

“SECURITY” for friends aiding you to secure an education or equip you in business.

GUARANTEES

(While you live)

A ready ASSEST in time of need.

“INSURE NOW.”

“DON'T DELAY!”

Whole Life
Limited Payment
Endowment

Liberal contracts—clear and concise. Immediately beneficial for full face value. No restrictions as to residence, travel or occupation.

LIBERAL CASH AND LOAN VALUES

ANNUAL DIVIDENDS

“BALTIMORE LIFE POLIGIES” are as safe as Government Bonds. Get one to-day. Consult

JAMES F. MOHN

Reading Offices : 619 Penn St. **READING, PA.**

Headache ❖ Neuralgia

Dr. Miles' Anti-Pain Pills

are highly praised by those who have used them for headache, neuralgia, and other aches and pains.

Pain is weakening, and while it may be only a symptom, relief is none the less necessary.



DR. MILES' ANTI-PAIN PILLS FOR HEADACHE
And Other Pains

25 DOSES
25 CENTS.

125 Doses \$1.

NEVER SOLD IN BULK.

TAKE **ONE**
of These Little Tablets
AND THE PAIN IS GONE.

IN MANY CASES

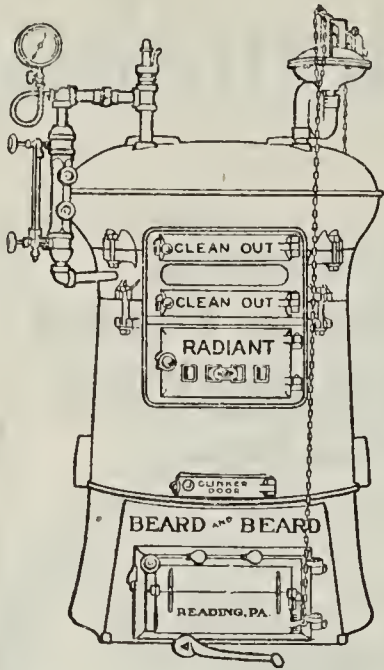
Dr. Miles' Nervine

will afford permanent relief from nervous trouble, whose only symptoms are pain in the head, face or other parts of the body.

Write us for free advice if your trouble is not easily recognized.

THE DR. MILES' MEDICAL CO.

ELKHART, INDIANA



Steam, Hot Water and Hot Air
Heaters and Supplies :: ::



BEARD & BEARD

Reading, Pa.

Both 'Phones



Everything That Goes Into Any
Heating Job :: :: :: ::

Booklet Marriage Certificate No. - 30

Artistically Lithographed
in Ten Colors.



This booklet is undoubtedly the most exquisite wedding souvenir that has been produced. It contains 17 beautiful floral designs, marriage certificate, pages for autographs, duties of husbands and wives, the home, etc. Every page is a gem in itself, containing in text and illustration that which is beautiful. Only \$3.00 per dozen. Single copy, 40c. If desired, we can print your picture in these.

Bridal Rose Marriage Certificate No. 35

This is the handsomest Sheet Certificate ever put on the market. It is an ornamental scroll, with background of drooping Bridal Roses and whitelilacs. The general tone of the background is a delicate pinkish gray, blending into ten beautiful tones and shades. The whole is a perfect harmony and very delicate. The wedding bells at the top are surrounded with lilies of the valley, violets, maiden hair fern, etc. Underneath the scroll is a scene of Ruth and Boaz. The sun is setting and the effect is beautiful beyond description. \$2.50 per doz.

Single Copy, 25c.



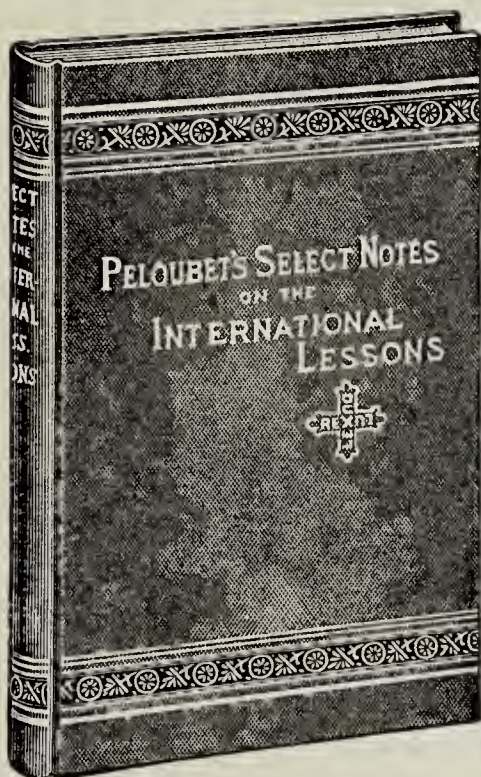
► Mention this publication and secure on approval, prepaid.
► dozen booklets or Bridal Rose, or both, for three days examination. If not satisfied in quality and price, return them postpaid. If kept over ten days they are yours, to be paid for in thirty days. We publish all kinds of certificates and booklets, Souvenirs, Collection Envelopes, Directories, etc. Send for Illustrated Catalog. Address all orders to

REV. I. M. BEAVER, Pub., Reading, Pa.

The PELOUBET SERIES

—of—

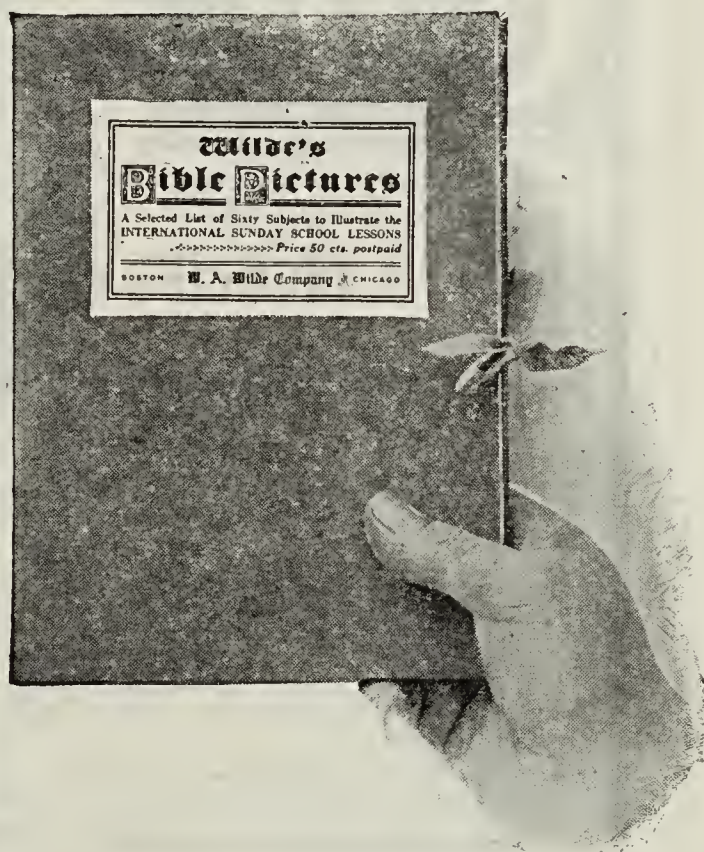
Sunday School Lesson Helps for 1914



Thirty-ninth annual volume Peloubet's 1914 Select Notes. Edited by F. N. Peloubet, D. D., and Amos R. Wells, A. M. Never so rich in material for the studious searcher after truth. And this is well separated, graded and treated according to the most approved modern principles of teaching and study. Cloth, price, \$1.00; postpaid, \$1.10.

Wilde's Bible Pictures

For illustrating the International Sunday-School Lesson for 1914. Price, in a handsome portfolio, 50c postpaid. Back numbers of series can be obtained at reduced prices.



Golden Text Book for 1914

contains Lesson References, Golden Texts and Daily Home Readings for the year. Makes a neat gift book, especially imprinted. Makes a splendid, but cheap, gift for a teacher to give his scholars. \$2.00 per hundred; by mail, \$2.30.

Central Printing and Publishing House

THE CENTRAL BOOK STORE

W. A. LAVERTY, Gen'l Mgr.

329 MARKET STREET, HARRISBURG, PA.

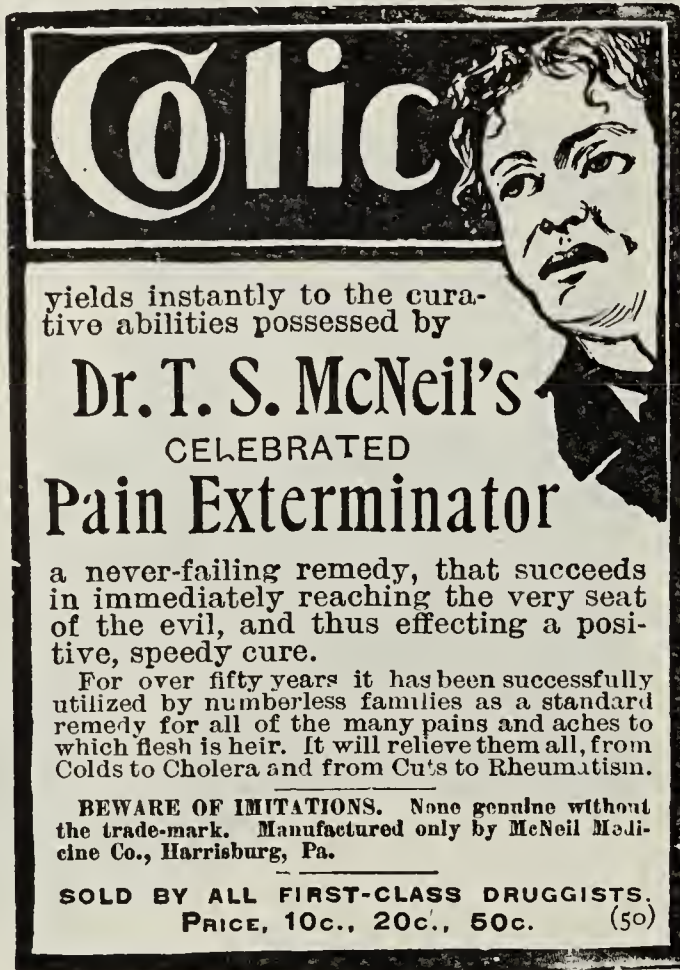
Wanner & Stief Hats

Are Known All Over Reading and Surrounding Country
They're Honest All Through

\$1.50, \$2.00, \$2.50

Try One Now

WANNER & STIEF 605 Penn Street
READING, PA.



Colic

yields instantly to the curative abilities possessed by

Dr. T. S. McNeil's
CELEBRATED
Pain Exterminator

a never-failing remedy, that succeeds in immediately reaching the very seat of the evil, and thus effecting a positive, speedy cure.

For over fifty years it has been successfully utilized by numberless families as a standard remedy for all of the many pains and aches to which flesh is heir. It will relieve them all, from Colds to Cholera and from Cuts to Rheumatism.

BEWARE OF IMITATIONS. None genuine without the trade-mark. Manufactured only by McNeil Medicine Co., Harrisburg, Pa.

SOLD BY ALL FIRST-CLASS DRUGGISTS.
PRICE, 10c., 20c., 50c. (50)

Do You Know

McNEIL'S COUGH REMEDY

will stop your cough, no matter how bad you may have it. It goes down and warms up the lungs. The cooling after taste is what tones up the nerves and makes them stronger, enabling the lungs to throw off the cold which has settled there.

It Removes the Cause

Try It To-day. The 50c size equals three 25c bottles

Sold by Dealers Everywhere

The Best on Earth—BACON'S COUGH DROPS
"D. B." on Every Drop

THE D. BACON COMPANY

Manufacturing and Jobbing

CONFECTIONERS

Distributing Agents for
LOWNEY'S CHOCOLATES

HARRISBURG, PA.

A Complete Line of Stoves, Furnaces and Gas Ranges



Beaver
BEAVERS THE BEST



Ranges
THEY STAND THE TEST

*Beaver
Oak*

*A
Stove
that Heats*

*Two Stories
Thoroughly*

"BEAVERS THE BEST. THEY STAND THE TEST."

THE DANVILLE STOVE & MFG. CO., Makers
DANVILLE, PENNSYLVANIA

Sold by all Leading Dealers Write for Booklet We will tell you how to get a "Beaver"

Indigestion

The use of HORSFORD'S ACID PHOSPHATE is especially recommended in many forms of Dyspepsia and Indigestion, particularly where the patient suffers from pains in the stomach or chest, continued sense of hunger, nausea or acid Stomach.

Excellent results have also followed its use in the treatment of Headache arising from derangement of the digestive organs or of the nervous system.

HORSFORD'S **Acid**
Phosphate
(NON-ALCOHOLIC)

Memorial Windows

Art Stained Glass
For Churches and Dwellings
Beveled Plate in Copper and Zinc

J. M. KASE & CO.
GLASS

8th and Court Streets

READING, PA.

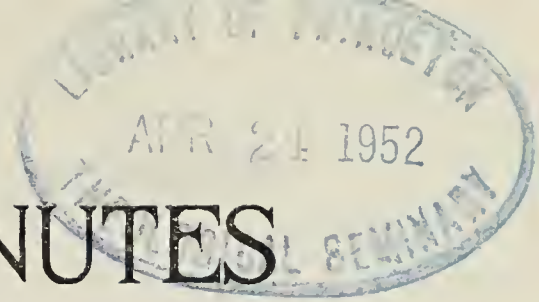
PIANOS OF QUALITY

Kranich & Bach, Krakauer, Christman, Vough, Keystone, Rudolf. Apollo—Keystone-Players. Matchless Miller Organs. Victor Victrolas, Victor Records.

MILLER ORGAN & PIANO CO.

Factory: 8th and Maple Streets
Warerooms: 738 Cumberland Street

LEBANON, PA.



THE OFFICIAL MINUTES

OF THE

One Hundred and Fourteenth Session

OF THE

EAST PENNSYLVANIA ANNUAL CONFERENCE

OF THE

Church of the [✓]United Brethren in Christ

Conferences. East Pennsylvania

HELD IN THE

Linden Street Church of the United Brethren in Christ
ALLENTOWN, PENNA., OCTOBER 1-6, 1913

**To the Members of East Pennsylvania Conference and
Constituency—**

In selecting the advertisers for these Minutes, we have taken special care to select only such as are trustworthy, and we take pleasure in recommending as such all whose advertisements appear. Please patronize the business firms advertised in the Minutes, and in such transactions inform the advertising patrons that you observed the advertisement in our Minutes.

Officers of the Conference and Conference Societies

Presiding Bishop.

W. M. Weekley, D. D.

Conference Superintendent.

D. D. Lowery, D. D., 1535 Derry Street, Harrisburg, Pa

Recording Secretary.

J. A. Lyter, D. D., 1508 Derry Street, Harrisburg, Pa.

Assistant Recording Secretary.

C. E. Boughter, Oberlin, Pa.

Statistical Secretaries.

E. A. G. Bossler, 125 N. 18th St., Harrisburg, Pa.

R. R. Butterwick, D. D., Mountville, Pa.

Conference Historical Secretary.

I. H. Albright, Ph. D., Middletown, Pa.

Conference Treasurer.

S. F. Engle, Palmyra, Pa.

Conference Sabbath-School Board.

Z. A. Weidler.
S. B. Wengert.

H. J. Behney.
O. P. Beckley.

D. L. Kaufman.

Trustees of Conference Preachers' Aid Society.

D. S. Longenecker.
H. M. Miller.

I. H. Albright, Ph. D.,
C. A. Mutch.

A. G. Nye.
H. E. Miller.

Managers of the Conference Missionary and Church Extension Society.

D. D. Lowery, D. D., Term ends 1916.
G. D. Batdorf, Ph. D., Term ends 1916.
J. A. Lyter, D. D., Term ends 1916.
T. G. Spangler, Term ends 1915.
H. L. Carl, Term ends 1915.

J. G. Stehman, Term ends 1915.
S. C. Enck, D. D., Term ends 1914.
E. A. G. Bossler, Term ends 1914.
E. O. Burtner, Term ends 1914.
S. F. Engle.

Trustees of Lebanon Valley College.

D. D. Lowery, D. D., Term ends 1916.
R. R. Butterwick, D. D., Term ends 1916.
E. O. Burtner, Term ends 1916.
G. F. Breinig, Term ends 1914.
I. B. Haak, Term ends 1914.
Dr. Seth A. Light, Term ends 1914.

M. S. Hendricks, Term ends 1915.
S. F. Engle, Term ends 1915.
D. E. Long, Term ends 1915.
H. E. Miller, Term ends 1915.
Aaron Kreider, Term ends 1915.
S. C. Snoke, Term ends 1915.

Trustees of Russel Biblical Fund.

R. S. Arndt. B. M. Breneman. W. W. Fridinger. H. S. Kiefer. S. L. Rhoads.

Professor of Russel Biblical Chair.

G. F. Bierman, Ph. D.

General Court of Appeals.

J. A. Lyter, D. D.

J. A. Keiper.

Trustees of the Anti-Saloon League.

C. A. Snavely.

B. F. Daugherty, D. D.

Trustees of the Quincy Orphanage.

C. L. Grabill.

J. G. Stehman.

H. M. Miller.

Conference Publication Board.

D. D. Lowery, D. D.
S. C. Enck, D. D.

J. A. Lyter, D. D.
G. D. Batdorf, Ph. D.

I. N. Seldomridge.
S. F. Engle.

Editor of the Conference Herald.

D. D. Lowery, D. D.

Committee on Inter-Church Federation.

N. L. Linebaugh.

H. M. Miller.

Conference Finance Commission.

D. D. Lowery, D. D.
S. C. Enck, D. D.

H. S. Gabel, D. D.
H. M. Miller.

S. F. Engle.
Robert A. Enders.

S. R. Grabill.

Educational Board.

J. T. Spangler, D. D., Term ends 1914.
A. S. Kreider, Term ends 1914.

R. R. Butterwick, D. D., Term ends 1915.
H. L. Kinports, Term ends 1915.

Conference Committees

Conference Branch Foreign Missionary Committee.

S. E. Rupp. G. D. Batdorf, Ph. D. A. S. Beckley.

Conference Branch Home Missionary Committee.

I. M. Hershey. Joseph Daugherty. A. S. Lehman.

Conference Committee on Christian Stewardship.

S. C. Snoke. S. R. Grabill. Miss Susan Balsbaugh.

Standing Committees.

Home Missions—Conference Committee on Home Missions.
Foreign Missions—Conference Committee on Foreign Missions.
Christian Stewardship—H. E. Ulrich.
Church Erection—Joseph Daugherty.
Education—J. T. Spangler, D. D.
Publishing Interests—A. K. Wier.
Sabbath Schools—H. J. Behney.
Young People's Society of Christian Endeavor—C. Y. Ulrich.
The Home—I. H. Albright, Ph. D.
Temperance—O. T. Ehrhart.
Bible Cause—J. B. Funk.
Resolutions—Clarence Mease.
Auditing Committee—B. F. Daugherty, D. D., A. S. Beckley.
Publicity Committee—Clint. S. Miller.
East Pennsylvania Conference—What, Why, How—S. C. Enck, D. D.

Committees on Courses of Study.

Committee on Applicants and Credentials—J. T. Spangler, D. D., H. E. Miller, A. S. Lehman.

First Year—C. A. Mutch, M. H. Jones, J. A. Keiper.

Licentiates—Clyde A. Lynch, O. T. Ehrhart, Mark G. Holtzman, Titus J. Leibold, P. B. Gible, J. W. Bomberger, Martin Groff, C. E. Rettew, D. E. Young, O. R. Brooks, J. R. MacDonald, R. H. Arndt, G. L. Blouch, I. W. Funk, Norman I. Fake, G. W. Hallman, J. O. Jones, C. R. Longenecker, Lloyd Martin, H. M. Mentzer, J. W. Oakes, H. E. Schaeffer, H. A. Smith, H. E. Ulrich, C. Y. Ulrich, C. W. Schwalm, H. F. Boeshore, H. H. Fertig.

Second Year—E. O. Burtner, H. F. Rhoad, Joseph Daugherty.

Licentiates—W. E. Shoop, C. G. White, P. M. Holdeman, C. L. Earley, J. L. Ohmacht, A. N. Ulrich, C. H. Holzinger, Ira D. Lowery.

Third Year—I. H. Albright, Ph. D., A. G. Nye, A. K. Wier.

Licentiates—W. E. Shoop, J. F. Brown.

Fourth Year—S. C. Enck, D. D., J. M. Walters, S. S. Daugherty.

Licentiates—G. W. Hess, E. S. Comrey.

CONFERENCE PROCEEDINGS

(Official Copy)

FIRST DAY—MORNING SESSION.

Allentown, Pa., October 1, 1913.

The one hundred and fourteenth session of the East Pennsylvania Annual Conference of the Church of the United Brethren in Christ, convened on the above date, in the Linden Street Church of the United Brethren in Christ of Allentown, Pennsylvania, Bishop William M. Weekley, D. D., of Kansas City, Missouri, presiding.

Bishop Weekley conducted the devotional service and read a Scripture Lesson from Colossians first chapter, after which he delivered an address.

The roll of the Conference was called, after which, the Conference standing, the roll of deceased members was called and a hymn sung.

J. A. Lyter and C. E. Boughter were re-elected Recording Secretary and Assistant Recording Secretary respectively.

E. A. G. Bossler and R. R. Butterwick were re-elected Statistical Secretaries.

The compensation of the secretaries was fixed as follows: J. A. Lyter, \$50.00; C. E. Boughter, \$30.00; E. A. G. Bossler, \$20.00; R. R. Butterwick, \$15.00, and the expenses of each respectively.

The Recording Secretary was on motion empowered to edit and arrange the Minutes.

The provisional program for the Conference as printed was designated as the program for this session of the Conference.

Harold Knauss was introduced to the Conference as page.

The following Resolution relative to hearing pastors' reports was passed:

Resolved, That the routine hearing of pastors' reports, one by one, be dispensed with, and that pastors and delegates of charges reporting deficits meet with the Finance Committee for conference about the matter, and that said Committee report its conclusions and recommendations to this body.

The Bishop appointed the following committees for this session of Conference:

Conference Committees.

Finance Committee—D. D. Lowery, S. C. Enck, J. A. Lyter, G. D. Batdorf, E. A. G. Bossler, E. O. Burtner, H. E. Miller, I. E. Runk, S. B. Wengert, S. F. Engle, T. G. Spangler, J. C. Stehman, M. S. Hendricks, I. B. Haak, S. C. Smoke.

Boundary Committee—D. D. Lowery, C. A. Mutch, I. H. Albright, C. W. Miller, B. M. Breneman, P. H. Balsbaugh, C. G. Rhoads, A. H. Boughter, J. I. Miller, H. F. Malick.

Nominating Committee—A. Lehman, A. G. Nye, A. K. Wier, D. S. Longenecker, B. F. Daugherty, E. C. Smith, B. H. Hechler, J. W. Garverich.

Conference Branch Foreign Missionary Committee—D. D. Lowery, Chairman; G. D. Batdorf, Secretary; R. R. Butterwick, H. L. Carl, S. R. Grabill.

Conference Branch Home Missionary Committee—S. C. Enck, A. K. Wier, H. P. Spayd.

Conference Committee on Christian Stewardship—S. C. Snoke, S. R. Grabill, M. S. Hendricks.

CONFERENCE PROCEEDINGS, 1913.

Standing Committees.

- Home Missions**—Conference Committee on Home Missions—A. K. Wier.
Foreign Missions—Conference Committee on Foreign Missions—G. D. Batdorf.
Christian Stewardship—Conference Committee on Christian Stewardship—S. C. Snoke.
Church Erection—A. S. Lehman.
Education—R. R. Butterwick.
Publishing Interests—E. A. G. Bossler.
Sabbath Schools—Z. A. Weidler.
Young People's Society Christian Endeavor—A. G. Nye.
The Home—A. L. Haeseler.
Temperance—Oliver Mease.
Bible Cause—M. H. Jones.
Resolutions—N. L. Linebaugh.
Auditing Committee—G. F. Breinig, M. H. Jones.
Publicity Committee—Clint S. Miller.

Committee on Courses of Study.

- Committee on Applicants and Credentials**—I. E. Runk, H. E. Miller, A. S. Lehman.
First Year—C. A. Mutch, M. H. Jones, J. A. Keiper.
Second Year—E. O. Burtner, H. F. Rhoad, Joseph Daugherty.
Third Year—I. H. Albright, A. G. Nye, A. K. Wier.
Fourth Year—S. C. Enck, J. M. Walters, S. S. Daugherty.
Elder's Orders—I. H. Albright, L. R. Kramer, J. B. Funk.
On Memoirs—I. M. Hershey, S. E. Rupp.

The following were granted advisory seats during the session of the Conference: Rev. W. R. Funk, D. D., Publishing Agent; Rev. S. S. Hough, D. D., Secretary, Foreign Missions; Rev. W. E. Schell, D. D., Secretary of Education; Rev. C. W. Brewbaker, Ph. D., Secretary of Sabbath Schools; L. O. Miller, General Church Treasurer; Rev. G. D. Gossard, D. D., President, Lebanon Valley College, and Rev. C. W. Stinespring, Field Agent, Quincy Orphanage.

The following were introduced to the Conference during the session:

United Evangelical Church—Revs. A. W. Cooper, D. G. Reinhold, J. H. Stermer, A. B. Saylor, D. P. Longsdorf, F. S. Borkey, E. S. Woodring, J. L. Guinther.

Evangelical Association—Revs. B. L. Romberger, B. F. Bohner, T. L. Wentz, J. Tonkin, A. H. Derstter, H. M. Taylor, F. M. Gingrich, Chas D. Dreher, Chas. H. Eagle.

Methodist Episcopal Church—Revs. Chas. M. Haddaway, J. T. Satchell.

Free Methodist Church—Revs. W. E. Frederick, D. O. King.

Baptist Church—Rev. William Ward West.

Reformed Church—Revs. Simon Sipple, Joseph S. Peters.

Secretary, Y. M. C. A.—H. W. Elvidge.

The following Resolution relative to applicants for educational aid was adopted:

RESOLVED, That all applications for aid from the Educational Beneficiary Fund be made in writing and submitted to the Committee on Applicants and Credentials; and, that no aid be given to any one except upon recommendation by this committee.

R. R. BUTTERWICK,
S. C. ENCK.

CONFERENCE PROCEEDINGS, 1913.

The following applicants for license to preach the Gospel were on motion referred to the Committee on Applicants and Credentials:

Raymond H. Arndt, G. L. Blouch, J. H. Dunham, C. L. Earley, Norman I. Fake, H. H. Fertig, I. W. Funk, George W. Hallman, John O. Jones, C. R. Longenecker, Lloyd Martin, H. M. Mentzer, John W. Oakes, H. E. Schaeffer, H. A. Smith, H. E. Ulrich, C. Y. Ulrich, C. W. Schwalm, Harry F. Boeshore.

W. C. Shoop and J. Warren Kaufman were referred to the same Committee for dismissals from the Conference.

The following resolutions, relative to church union, were unanimously adopted.

RESOLUTIONS ON CHURCH UNION.

Whereas, It is well known that our people of the East Pennsylvania Conference do not consider favorably the proposition of the union of the Church of the United Brethren in Christ and the Methodist Protestant Church on the basis of the syllabus presented by the Church-union commission to our late General Conference; and,

Whereas, Our charter provisions are such as to make it extremely hazardous to take any action favorable to such union; therefore, be it RESOLVED,

First, That, by a rising vote, we express our disapproval of the organic union of the aforesaid Churches; and,

Second, That therefore we do not approve of the submission of the Church-union proposition to a vote by our people, and that we will not be held responsible for any further negotiation on this question, and consequently must refuse to accept any apportionment of the expense that may be incurred by any further negotiation or action on this matter.

The first day morning session of the Conference adjourned with the benediction by H. M. Miller.

—o—

FIRST DAY—AFTERNOON SESSION.

The first day, afternoon session of the Conference convened at 1.30 o'clock. After prayer by H. S. Gabel, Bishop Weekley delivered a most practical address on "The Need of Revivals and How to Promote Them," which was followed by a precious communion service.

J. F. Musselman was on motion admitted to the itinerant list. The names of M. J. Mumma and U. S. G. Renn deceased during the year were referred to the Committee on Memoirs, consisting of I. M. Hershey and S. E. Rupp.

G. A. Richie, who joined another denomination was referred to the Committee on Applications and Credentials.

The report of the Conference Superintendent, D. D. Lowery, was read, approved, and his character passed. It is as follows:

CONFERENCE SUPERINTENDENT'S REPORT.

To the Presiding Bishop and Members of the East Pennsylvania Conference in Annual Session at Allentown Pa., Greeting.

My Dear Brethren:—How quickly the year has gone! and here we are again in annual session—the one hundred and fourteenth session of the East Pennsylvania Conference. Much more could be said than time would permit or space could be given in the records of this conference for the detailed report of all the items of interest and accomplishment, with all their various aspects and degrees of importance to each separate congregation represented in this body. I shall refrain from giving statistics as in former years, since these will be found in the Treasurer's report and the statistical chart and summary of the published minutes in better form and greater accuracy than they could otherwise be given, nor has it ever been possible to secure a perfectly complete report until our meeting here. I shall not attempt to do this, and fill this space with mere guesses and suppositions, but I shall rather confine myself to a brief state-

CONFERENCE PROCEEDINGS, 1913.

ment of conditions as I see them, and perhaps offer a few suggestions that may be helpful to a better understanding of our needs and to the unfolding of a larger vision of our future possibilities.

Deaths—There were two deaths during the past year, one in the active ministry, Rev. U. S. G. Renn; the other in the superannuated class, Rev. M. J. Mumma. For each of these brethren a suitable paper will be read in the memorial service provided in the conference program for Saturday afternoon's session.

Vacancies—Northampton charge, which became vacant immediately after the last session of conference, was finally supplied by the appointment of Rev. C. R. Longenecker, a quarterly conference preacher of our Palmyra First church, who served them acceptably during the remainder of the year. Early in the year our State Street church, Harrisburg, became vacant by the death of Rev. U. S. G. Renn. The vacancy was immediately filled by the appointment of Rev. Thomas Garland as supply to fill out the unexpired term, which he did faithfully and efficiently. Almost at the close of the conference year Rev. P. F. Roberts, serving Sinking Spring charge as a student, resigned, but our people there being then in the midst of church repairs, concluded that it would not be specially advantageous to the congregation to have a pastor appointed at that late date, so that the charge was left vacant for the remaining few weeks.

Rev. H. B. Spayd has already indicated his purpose to remove to California, and Rev. I. E. Runk, D. D., recently accepted an appointment from the Allegheny Conference; so that by the voluntary removal of these two brethren I have two absolute vacancies among our pastors in the active work of our conference to report.

Itinerancy—Rev. J. F. Musselman, who was received into conference ministerial relations about four years ago, and has ever since been in the active work as a missionary in Africa, should be voted into the itinerancy at this session.

Applicants for License—We have, I suppose, the largest class of applicants for annual conference license to preach coming to this conference in all our history, and I doubt whether it can be equalled anywhere in this denomination, and besides, one to whom I suggested that he seek admission into the Allegheny conference, since I knew that they needed, perhaps, a man of his type, while we had an oversupply, found admission there upon the recommendation of one of our quarterly conferences, leaving still eighteen to be referred to the proper committee for consideration, as follows: Raymond H. Arndt, Harry Boeshore, G. L. Blouch, C. L. Early, Norman I. Fake, H. H. Fertig, I. W. Funk, Geo. F. Hallman, John O. Jones, C. R. Longenecker, Lloyd Martin, H. M. Mentzer, John W. Oakes, C. W. Schwalm, H. E. Schaeffer, H. A. Smith, H. E. Ulrich, C. Y. Ulrich. All these were properly recommended by their respective quarterly conferences for your consideration.

Material Prosperity—On a very large number of our pastoral charges churches and parsonages have been improved, but I can only mention a few here, such as have made more or less extensive repairs to their properties. Elizabethville, where the church building had been considerably damaged by fire; Elizabethtown, completing and fitting up the basement, thus supplying additional facility for Sunday school work; Florin, where the tower was enlarged and the church otherwise improved and beautified; Lancaster, North Queen Street, furnished a new set of pews and a more satisfactory adjustment of the steam-heating plant; Lancaster, Laurel Street, building tower to church; Coatesville, general overhauling, frescoing and carpeting; Philadelphia, Mt. Pisgah, decorating ceiling and side walls with beautiful metallic workmanship, carpeting and otherwise adding improvements to the building; Allentown, Sixth Street, frescoing and other improvements made to the building; Sinking Spring, furnished with a set of modern pews, frescoing and carpeting; Lebanon, Bethany, enlargement of church building; Palmyra, Second, furnished the Sunday school room with a new set of pews, carpeting and frescoing, and otherwise making improvements; Hershey, extension of building and other important improvements; Schuylkill Haven, placing beautiful metallic ceiling and on side walls, and other improvements.

The fine stone church building at Annville, to which I referred in last year's report as then in process of completion, was dedicated early in the conference year at a cost of \$75,000, and the Sunday school building of the Harrisburg, Sixth Street, church, a splendid stone structure, was completed and dedicated at a cost of \$28,000.

Our Lancaster Covenant people have recently purchased an excellent site of large dimensions on the corner of Mulberry and Orange streets, at a cost of \$34,000, and it is expected that operations will begin there before so very long in the erection of a fine, large, modern church building, such as they need to meet their present demands.

In accordance with the action of the last annual conference a location, that can not be surpassed, was early secured for our West Philadelphia project on the corner of Catherine and Fifty-ninth streets, and after all the necessary preliminary arrangements had been made the building of the chapel or Sunday school building and parsonage was entered upon with energy and large faith, so that now the buildings are rapidly nearing completion, and the church will be ready for dedication some time during the month of October. This building will be a fine stone structure, complete in all its appointments, and imposing in its appearance. But I must not say too much in description of it, for it must be seen to be properly appreciated and admired. I should also say in this connection that Dr. Enck has been out in the field, traveling over a large part of the

CONFERENCE PROCEEDINGS, 1913.

conference district soliciting funds for this worthy enterprise, and he has succeeded beyond our highest expectation. The class there was organized on Easter Sunday with fifty-three charter members, and at the present time the membership is eighty-four.

A Sunday school, and later a class was organized at Tremont by Rev. P. M. Holdeman, the pastor of the Valley View charge. The indications are very favorable for a growing and prosperous congregation at that point, and they come to this conference asking for recognition by requesting to be placed on the list of appointments, and to have a pastor assigned to the charge.

Convention and Camp Meetings—The conference Branch of the Woman's Missionary Association met in their annual gathering at Mt. Carmel, and is reported to have been a very enthusiastic and inspiring occasion.

The usual camp meetings were again held in their respective groves, and were all well attended. The Mt. Gretna Camp Meeting Association completed finally its very pleasant task, without a dissenting voice, of adopting the new constitution and by-laws, in harmony with our church regulations, thus bringing that Association under the absolute control and authority of the Church. This conference should take some action requesting the Board of Managers to provide for the holding of a Bible Conference at that place, of such character and strength as to awaken universal interest and secure general co-operation among our pastors and laity.

Lebanon Valley College—It is most gratifying to learn that our College, located in our immediate midst, has lately opened its new year with a most hopeful outlook, in the largely increased attendance of students, the better equipment that has been supplied, and therefore the brighter hope that has come to its patrons and that seems to grip them with a renewed purpose to make it the leading institution of the Church.

Our Missions—Undoubtedly we shall always have the poor with us, and this is true of a few of the missions in the conference, but the large majority of them are rapidly coming to their maturity, and will soon be able to stand unassisted, and take their places in the ranks of our stations, when they will help in the extension of our work in the establishment of missions in important centers as yet unoccupied by our Church. That should be the constant aim, ambition and eager desire of all who are now receiving help, to come speedily to the point where they may have the glorious satisfaction of helping others instead of depending upon others for help. God pity the church or congregation that persists in holding on to its crutches and stubbornly refuses to learn to walk by itself. And then, too, there should not now be a charge in the conference, outside of a few missions, dependent upon an appropriation to meet the minimum salary of its pastor. We can not go up with our minimum salary until the present minimum condition is entirely met.

Salaries—While there has been commendable advance in the salaries paid the pastors of the conference, there is still room for improvement. Perhaps our conference pays the highest average salary—or equal to the highest—in the denomination, but there are still individual congregations in other conferences that surpass us by several hundred dollars; and this, not because they are more able, but because they have come to see the advantage, both to themselves and the pastor, in doing so. We should now get our eyes off the minimum and fix them on the maximum salary possibility, and so move in the direction of an adequately paid, in keeping with our demands for an adequately efficient ministry. If our men who have really made our charges strong and effective are to be held in service with us we must give proper recognition to their abilities, and show reasonable appreciation of their valuable services; in the first place, by acknowledging their equality with the best anywhere—and this will not be difficult to do—; and in the second place, by giving them remuneration for their services commensurate with the demand their ability and value to the congregation which they may serve, places upon such congregation. By some strangely elusive attraction our people are some times drawn admiringly to men at a distance upon whom they place estimates which, unaccountably, they never think of placing upon men of their own conference who are yet known and acknowledged to be of superior strength and quality—I have particular cases of actual occurrence in mind here. By what strange infatuation are we some times led to smite the hand that helps, and to kiss the hand that strangles!

The Budget—It may be expected that I say something about the new plan of finance for the benevolences of the Church. But this matter is to have special notice as provided in the program, so that I need only say here that it is hoped that our pastors and people will rally to the support of this interest and determine by a united support that it shall meet with complete success.

In practically all of our charges there is something of a budget system, in a number of them a complete arrangement of this sort for the financing of the general and local interests of the Church, but it is most earnestly desired that it should be universally adopted. I would suggest that the conference pass upon it in such a way as to make the adoption of the complete budget system universally obligatory, together with the requirement that an estimate be placed upon every member of the Church in each local congregation. We shall never be able to reach our best possibility everywhere in this regard until we have the courage and the grace to say that there shall be no other method of finance from end to end of the district.

The Spiritual Life of the Church—Whatever we may be able to say about the material things, and congratulate ourselves upon the advancement made, and the unusual prosperity enjoyed in this respect, the only true foundation of

all permanency in building up our Church into the glorious structure of successful achievement, which neither the storms nor the floods of time can demolish, must be the spiritual life of our people. This must necessarily have first and chief attention. The progress here made, I fear some times, has not been keeping pace with the material and numerical growth of the Church. In all our calculating and planning for the future material interests of the Church we should give large place in our calculation to a devoted purpose to bring our people up to a high standard of spiritual attainment, and so, therefore, of splendid efficiency in Christian service. Important and helpful as it undoubtedly is to have fine church buildings, with all the appliances and facilities that the best taste, skill and money can provide, it is still more important that we have the highest type of Christian manhood and Christian womanhood, fit temples for the indwelling of the Holy Spirit. May I appeal to my brethren that we emphasize this more and more in our preaching, and then enter upon an every-member campaign of soul-winning in our respective communities.

Special Mention—I should, perhaps, mention before closing that while two of the ministerial seats are vacant here to-day because death has come into our midst, as I stated under that head in this report, there is also another seat vacant, that of Rev. J. Francis Smith, whose physical condition is so precarious as to have prevented him from fulfilling his most cherished desire to meet with us in this session of conference. He is to undergo an exploratory operation, and it is to be hoped that it may result in the restoration of his health. He desired that I remember him to his brethren, and I also ask that you remember him in your prayers.

In Conclusion—I desire to express my heart-felt gratitude to all my brethren for their uniform kindness to me, and my devout thanks to our Heavenly Father for His great goodness to me, and for his sustaining power vouchsafed in the midst of trials and difficulties, not only for myself, but also for all here present; and praying for His continued favor, and especially for His presence with us in annual conference session, to direct in all our deliberations, so that His will may be done here as it is done in Heaven, I remain

Yours in fraternal bonds of service,

D. D. LOWERY.

The Boundary Committee reported as follows, which was on motion approved.

REPORT OF THE COMMITTEE ON BOUNDARIES.

We, your Committee on Boundaries recommend the following:

First That there be one Conference Superintendent district.

Second, That Tremont be recognized as an appointment and known as Tremont charge.

Third, That Barry be detached from Valley View charge and attached to Tremont charge.

Fourth, That Sinking Springs charge be attached to Denver and be known as Denver charge.

Fifth, That Brunnerville be detached from Hopeland and be placed under the quarterly conference of Lititz charge.

Sixth, That the name of Philadelphia Mt. Pisgah be changed to Philadelphia First, and Philadelphia West to Second U. B. Church, West Philadelphia.

Seventh, That all other charges remain as they now are.

B. M. BRENEMAN, Secretary.

D. D. Lowery was re-elected Conference Superintendent for the twenty-first consecutive term.

The following resolutions relative to a bond issue and mortgage on the West Philadelphia church property were presented and adopted:

RESOLUTION.

Be it Resolved by the East Pennsylvania Annual Conference of the Church of the United Brethren in Christ, in annual session at Allentown, Pennsylvania,

That the East Pennsylvania Annual Conference of the Church of the United Brethren in Christ hereby authorizes its Treasurer to pledge any and all bonds amounting in the aggregate to fifteen thousand dollars and authorized by resolution of this Annual Conference, which bonds are secured by a first mortgage on real estate situated at the north east corner of Catherine Street and Fifty-ninth Street, in the City of Philadelphia, Pennsylvania, in favor of The Valley Trust Company of Palmyra, Pennsylvania, as Trustee, as collateral security for the payment of any or all loans that may be necessary to make in order to pay, at the stipulated time, the balance due on the contract price of the church property situated at the north east corner of Catherine Street and Fifty-ninth Street, in the Forty-sixth Ward of the City of Philadelphia, State of Pennsylvania.

RESOLUTIONS.

Be it Resolved by the East Pennsylvania Annual Conference of the Church of the United Brethren in Christ, in annual session at Allentown, Pennsylvania:

First, That the East Pennsylvania Annual Conference of the Church of the

CONFERENCE PROCEEDINGS, 1913.

United Brethren in Christ hereby authorizes its President and Secretary to execute, acknowledge and deliver as the act and deed of the Conference aforesaid, a first mortgage upon its real estate situated at the north east corner of Catharine Street and Fifty-ninth Street, in the Forty-sixth Ward of the City of Philadelphia, State of Pennsylvania, in favor of The Valley Trust Company of Palmyra, Pennsylvania, as Trustee, for an issue of Bonds to the amount of FIFTEEN THOUSAND (\$15,000.00) DOLLARS, to secure the payment of said Bonds.

Secondly, That the said President and Secretary aforesaid are authorized to have printed Bonds, impressed with the seal of the corporation, signed by its President and Secretary, and to contain the stipulations hereinafter set forth.

Thirdly, That the aforementioned Bonds shall be forty-five (45) in number and numbered from one (1) to forty-five (45) inclusive; That Bonds numbered one (1) to fifteen (15) inclusive shall be in the amount of FIVE HUNDRED (\$500.00) DOLLARS, and Bonds numbered from sixteen (16) to Forty-five (45) shall be in the amount of TWO HUNDRED AND FIFTY (\$250.00) DOLLARS, the total aggregating FIFTEEN THOUSAND (\$15,000.00) DOLLARS; That they shall be made payable to THE VALLEY TRUST COMPANY OF PALMYRA, PENNSYLVANIA, or Bearer, at the place of business of said Trust Company in Palmyra, Pennsylvania, TEN (10) years from April 1, 1914, with the option to the said Conference to redeem them or any of them after April 1, 1919, providing a notice of not less than thirty (30) days be given the Bondholder, the interest on the said Bonds ceasing at the appointed time; and that the Bonds shall guarantee the payment of an annual interest of Five (5) per cent., payable annually on the first day of April in each year at the place of business of the aforesaid Trust Company, the necessary coupons being attached to the said bonds.

Fourthly, That the said President and Secretary aforesaid are authorized to secure fire insurance policies upon the said building for such a period and in such amounts as they shall deem necessary with the mortgage clause attached in favor of The Valley Trust Company, of Palmyra, Pennsylvania, Trustee, for the benefit of the said Bond holders.

THIS INDENTURE made the first day of October in the year of our Lord Nineteen Hundred and Thirteen (1913), Between the East Pennsylvania Annual Conference of the Church of the United Brethren in Christ (a corporation of the State of Pennsylvania) party of the first part, and The Valley Trust Company of Palmyra, Pennsylvania (a corporation of the State of Pennsylvania) Trustee for the bondholders hereinafter mentioned, party of the second part.

Whereas, At the annual meeting of the said the East Pennsylvania Annual Conference of the Church of the United Brethren in Christ, duly called and constituted as prescribed by the Charter and Discipline of the Church, at Allentown, Pennsylvania, on the day of October in the year of our Lord Nineteen Hundred and Thirteen (1913), the following resolutions were unanimously adopted by the Annual Conference aforesaid, to wit:

Resolved, First, That the East Pennsylvania Annual Conference of the Church of the United Brethren in Christ hereby authorizes its President and Secretary to execute, acknowledge and deliver as the act and deed of the Conference aforesaid, a first mortgage upon its real estate situated at the north east corner of Catharine Street and Fifty-ninth Street, in the Forty-sixth Ward of the City of Philadelphia, State of Pennsylvania, in favor of The Valley Trust Company of Palmyra, Pennsylvania, as Trustee, for an issue of Bonds to the amount of FIFTEEN THOUSAND (\$15,000.00) DOLLARS, to secure the payment of said Bonds.

Secondly, That the said President and Secretary aforesaid are authorized to have printed Bonds, impressed with the seal of the corporation, signed by its President and Secretary, and to contain the stipulations hereinafter set forth.

Thirdly, That the aforementioned Bonds shall be forty-five (45) in number and numbered from one (1) to forty-five (45) inclusive; That Bonds numbered one (1) to fifteen (15) inclusive shall be in the amount of FIVE HUNDRED (\$500.00) DOLLARS, and Bonds numbered from sixteen (16) to Forty-five (45) shall be in the amount of TWO HUNDRED AND FIFTY (\$250.00) DOLLARS, the total aggregating FIFTEEN THOUSAND (\$15,000.00) DOLLARS; That they shall be payable to THE VALLEY TRUST COMPANY OF PALMYRA, PENNSYLVANIA, or Bearer, at the place of business of said Trust Company in Palmyra, Pennsylvania, TEN (10) years from April 1, 1914, with the option to the said Conference to redeem them or any of them after April 1, 1919, providing a notice of not less than thirty (30) days be given the Bondholder, the interest on the said Bonds ceasing at the appointed time; and that the Bonds shall guarantee the payment of an annual interest of Five (5) per cent., payable annually on the first day of April in each year at the place of business of the aforesaid Trust Company, the necessary coupons being attached to the said Bonds.

Fourthly, That the said President and Secretary aforesaid are authorized to secure fire insurance policies upon the said building for such a period and in such amounts as they shall deem necessary with the mortgage clause attached in favor of The Valley Trust Company, of Palmyra, Pennsylvania, Trustee, for the benefit of the said Bond holders.

NOW THIS INDENTURE WITNESSETH that the party of the first part for the better securing the payment of the said Bonds, aggregating the sum of FIFTEEN THOUSAND (\$15,000.00) Dollars, with interest thereon as aforesaid unto the bondholders of the said bonds according to the items and conditions thereof, and in consideration of the sum of One Dollar unto the party of the first part in

CONFERENCE PROCEEDINGS, 1913.

hand well and truly paid by the said party of the second part at and before the ensembling and delivery hereof, the receipt whereof is hereby acknowledged, has granted, bargained, sold, aliened, enfeoffed, released and confirmed, and by these presents does grant, bargain, sell, alien, enfeoff, release and confirm unto the said party of the second part, Trustee as aforesaid, its successors and assigns, to and for the proper use and behoof of the holders of the aforesaid bonds:

All that certain lot or piece of ground with the improvements, situate at the North East Corner of Catherine Street and Fifty-ninth Street in the Forty-sixth ward of the City of Philadelphia, Pennsylvania, CONTAINING in front a breadth on the said Catherine Street One Hundred and Fifty-six feet and extending of that width in length a depth Northward along the East side of said Fifty-ninth Street and a line parallel therewith, Seventy-three feet six inches to the middle of a certain three feet wide alley leading from Fifty-eighth Street to Fifty-ninth Street.

Being part of the same premises which Lucius S. Landreth and wife by indenture dated the 15th day of June, A. D. 1906, and recorded at Philadelphia in Deed Book W. S. V. No. 684, page 181, etc., granted and conveyed unto Charles F. Grayson and George W. Morris in fee. And the said George W. Morris and Wife by indenture dated the 18th day of December, A. D. 1909, and recorded at Philadelphia in Deed Book W. S. V. No. 1221, page, 315, etc., and re-acknowledged and now lodged for record, granted and conveyed the one full equal and undivided half part of a larger lot or piece of ground of which the above described premises are a part, unto Lucius S. Landreth in fee. And the same premises which Lucius S. Landreth and Frances E. Landreth his wife and Charles P. Grayson, unmarried, by indenture dated the 13th day of January, A. D. 1913, and recorded at Philadelphia in Deed Book E. H. T. No. 178, page 368, etc., granted and conveyed unto the East Pennsylvania Annual Conference of the Church of the United Brethren in Christ in fee. TOGETHER with the free and common use, right, liberty and privilege of the above mentioned alley as and for a passage way and water course at all times hereafter forever, in common with the owners, tenants and occupiers of the other lots of ground bounding thereon and entitled to the use thereof.

TOGETHER with all and singular the improvements, ways, streets, alleys, passages, waters, water-courses, rights, liberties, privileges, hereditaments, buildings, and appurtenances whatsoever thereunto belonging, or in any wise appertaining, and the Reversions and Remainders, Rents, Issues and Profits thereof, and of every part and parcel thereof.

TO HAVE AND TO HOLD the said hereditaments and premises hereby granted, or mentioned and intended so to be, with the appurtenances, unto the said party of the second part, Trustee as aforesaid, its successors and assigns, to and for the proper use of the holders of the said bonds. UNDER AND SUBJECT NEVERTHELESS to the following conditions, agreements and restrictions, That there shall not at any time hereafter forever be erected, altered, changed into or used any store or stores, public or private garages, public or private stables or any other building or buildings for offensive use or occupation upon the above described lot or piece of ground, or any part or parts thereof, except that there may be erected a store upon the North East Corner of Fifty-ninth and Catharine Streets, That no building or buildings to be erected upon the above described lot or piece of ground or any part thereof shall at any time hereafter forever be used or occupied for the manufacture or sale of spirituous, vinous or malt liquors, either wholesale or retail or as a bottling establishment for any of said liquors. That no building or buildings to be erected upon the above described lot or piece of ground or any part thereof shall at any time hereafter forever be occupied or be permitted to be occupied by any person or persons other than the Caucasian Race. That if at any time hereafter dwellings, flat-houses or apartment houses shall be built upon any part or parts of the above described lot or piece of ground, the same shall not be less than fifteen feet six inches in front of brickwall, nor less than forty-two feet in depth of brickwall and not less than two stories in height of brickwall.

PROVIDED ALWAYS, nevertheless, that if the said party of the first part, its successors or assigns do and shall well and truly pay, or cause to be paid, unto the said party of the second part, Trustee as aforesaid, its successors and assigns, the aforesaid debt or sum of FIFTEEN THOUSAND (\$15,000.00) Dollars on the first day of April, 1924, together with interest and premiums of insurance as aforesaid, without any fraud or further delay, and without any deduction, defalcation or abatement to be made of anything for or in respect of any taxes, charges or assessments whatsoever, that then and from thenceforth, as well as this present indenture, and the estate hereby granted, shall cease, determine and become void, anything hereinbefore contained to the contrary thereof in any wise notwithstanding.

BUT PROVIDED ALSO that in case of default being made at any time in the payment of the principal of the said Bonds, or of any annual interest thereon when due and payable by the terms and conditions of the said Bonds, or any charges or premiums of insurance as aforesaid, upon the request of the majority (in amount) of the bondholders, after first satisfactorily securing said Trustee in connection with the same, the entire amount hereby secured with interest thereon unpaid shall then become due and payable, and a writ of Scire Facias may be issued forthwith on this mortgage and prosecuted to judgment, execution and sale for the collection of the whole amount including interest unpaid together with all premiums of insurance, fees and costs and expenses

CONFERENCE PROCEEDINGS, 1913.

of such proceedings, including an attorney's commission of Five (5) per cent., and all errors in such proceedings together with stay of or exemption from execution or extension of the time of payment which may be given by any Act of Assembly now in force or which may be enacted hereafter are forever waived and released; and PROVIDED FURTHER that the said Trustee shall not be held liable for anything done in good faith in the performance of its said trust.

IN WITNESS WHEREOF the said party of the first part to these presents has caused its common or corporate seal to be hereunto affixed and the President and Secretary of the said Annual Conference have, by virtue of the authority vested in them, hereunto subscribed their names in attestation of the execution hereof, the day and year first above written.

EAST PENNSYLVANIA ANNUAL CONFERENCE OF THE CHURCH OF THE UNITED BRETHREN IN CHRIST.

(Seal).....President.
(Seal).....Secretary.

Signed and sealed in the presence of us.

.....
.....

State of Pennsylvania, } ss:
County of

BE IT REMEMBERED that on the day of A. D. 1913, before me, a notary public for the said State and County, personally appeared and President and Secretary respectively of the East Pennsylvania Annual Conference of the Church of the United Brethren in Christ, the above named corporation, who being duly affirmed according to law, depose and say that they were personally present at the execution of the above written Indenture of Mortgage and saw the common seal of the said corporation, the East Pennsylvania Annual Conference of the Church of the United Brethren in Christ duly affixed thereto; and that the seal thus affixed thereto is the common or corporate seal of the said the East Pennsylvania Annual Conference of the Church of the United Brethren in Christ; and that the said Indenture of Mortgage was duly signed, sealed and delivered by and as for the act and deed of the said the East Pennsylvania Annual Conference of the Church of the United Brethren in Christ for the uses and purposes therein mentioned; and that the names of these deponents subscribed to the said Indenture of Mortgage as President and Secretary respectively of the corporation aforesaid in attestation of the due execution and delivery thereof are of these deponents own and respective handwriting.

.....
.....

Affirmed and subscribed before me the day and year above mentioned, as witness my hand and notarial seal.

.....
Notary Public.

THE VALLEY TRUST COMPANY OF PALMYRA, PENNSYLVANIA, above-mentioned accepts the foregoing trust.

IN WITNESS WHEREOF the said corporation has caused its corporate seal to be affixed hereto and its President and Secretary to subscribe their names in attestation of the due execution hereof.

THE VALLEY TRUST COMPANY OF PALMYRA, PENNSYLVANIA.

.....President.
.....Secretary.

The report on Christian Stewardship was presented by S. C. Snoke, and after addresses by S. S. Hough, D. D., and L. O. Miller was adopted. It is as follows:

REPORT OF COMMITTEE ON CHRISTIAN STEWARDSHIP.

We find that not all Christians, in fact a comparatively small percentage, have learned the secret of that richer, fuller Christian experience of which we are assured in Malachi 3-10.

The matter of giving is one of the sweetest of the Christian graces if done on God's plan. As happiness and joy are much sought after in this life, the question naturally arises, why do so many miss this means of its attainment? Let us stop a moment and consider a few facts which our own experience and history will confirm.

The work of a church has been entered upon. Little has been said respecting its financial responsibility. It is regarded as a religious institution. The other is lost sight of. The months roll around and there are pressing needs for money. The anxious pastor or official appeals from the pulpit and desk.

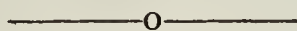
CONFERENCE PROCEEDINGS, 1913.

They have gone about soliciting, not once, but yea, twice, thrice and maybe oftener. Soon you hear the criticism, "Ah! they are always begging down at that Church." We all realize how much, giving, under those conditions, is a Christian grace. It takes wonderful grace to give at all.

It is gratifying, however, that during recent years these conditions have been changed. Pastors and officials are placing the facts before their congregations from the start. Through inspiration and educational processes, the people are being led to systematically and cheerfully support the Church, and its interests at home and abroad. With the result that pastors have been able to go into their pulpits and fulfill that higher calling of preaching and teaching as well as going about doing good. To illustrate—a church, within the knowledge of the Committee, for years circulated envelopes periodically for this, that, and the other. Appeals were made frequently from the pulpit and at least two special offerings were taken yearly. Fortunately, they learned a better way. A budget was made, showing the possible current expenses and benevolent offerings to be made during the year. The Duplex envelope system was adopted. The whole financial plan was fully explained to every member before the work of the conference year began. It is hardly necessary to state that the financial problem of that church was solved.

So your committee most earnestly recommends that each church accepts and immediately puts in operation, the plan of finance adopted by the recent General Conference as it relates to the local church. We want again to bring to your attention the fourth recommendation embodied in the report of your Committee on Christian Stewardship at your last annual session, viz., that the tithing principle, which is the Biblical method of church support, be presented by the pastors in a series of sermons for the financial and spiritual good of their people, and the up-building of the educational institutions of the church.

The first day, afternoon session of the Conference adjourned with the benediction by William E. Schell, D. D., General Secretary of Education.



SECOND DAY—MORNING SESSION.

The second day, morning session of the Conference convened at 8.30 o'clock. Devotional exercises were conducted by U. Gambler.

The roll of the Conference was called.

The Minutes of the first day's sessions were read and approved.

The names of the following unemployed ministers were called and their characters passed: G. F. Bierman, J. Binkley, J. W. Boughter, F. J. Butterwick, G. W. Enders, U. Gambler, I. M. Groff, J. B. Koons, William Lamey, J. L. Ohmacht, J. Runk, J. Shoop, J. G. Steiner, A. N. Ulrich, A. M. Blecker, J. W. Bomberger, J. B. Glick, M. G. Holtzman, J. H. Kurtz, W. H. Lehman, T. J. Leibold, Ira D. Lowery, C. E. Rettew, H. U. Roop, W. H. Snyder, B. B. Weidman.

On motion the characters of all the employed ministers were passed.

The following resolution relative to the Conference Church Extension and Missionary Society was passed:

Resolved, That the Conference Church Extension and Missionary Society of the East Pennsylvania Conference of the Church of the United Brethren in Christ, is hereby authorized and empowered to make such loans during the year as it may deem necessary.

Signed,
S. C. ENCK,
D. D. LOWERY.

The Finance Committee presented the following report which was on motion adopted. It was also ordered that a thousand copies of the report be printed and distributed to the members of the Conference during the session.

CONFERENCE PROCEEDINGS, 1913.

REPORT OF FINANCE COMMITTEE.

The Finance Committee begs to submit the following report and recommendations:

FIRST: That we adopt the following budget of Finances:

Receipts

Rental on Harrisburg Lot,	\$30 00
House Rent,	100 00
Interest on Notes,	300 00
Conference Budget,	15,520 00
General Conference Budget,	18,500 00
Total,	\$34,450 00

Expenditures

Superintendent's Salary,	\$2,250 00
Appropriations,	5,200 00
Lebanon Valley College,	1,500 00
Preachers' Aid,	1,000 00
Interests and Discounts,	2,900 00
Minimum Salary,	1,000 00
General Conference Budget,	18,500 00
Contingencies,	2,350 00
Total,	\$34,450 00

SECOND: That there be three columns of assessments as follows: Conference Budget, General Conference Budget and West Philadelphia.

THIRD: That the columns for Conference Budget include Superintendent's Salary, Preachers' Aid, Lebanon Valley College, Contingent Fund and Conference Missions.

FOURTH: That the column for General Conference Budget include Foreign Missions, Home Missions, Church Erection, Bishops' Salary, Finance Commission, Preachers' Pension, Sunday School General Fund, Bonebrake Seminary, Educational Beneficiary, General Conference Expenses, Evangelism and Incidentals.

FIFTH: That the Conference Superintendents' Salary be \$2,250 a year.

SIXTH: That we make an appropriation of \$1,500 as an installment on a pledge given Lebanon Valley College at the Conference of 1908.

SEVENTH: The apportioned assessments are based upon the financial ability, membership, encumbrance or freedom from encumbrance by local financial enterprises and a measure of developed activity in the several pastoral appointments in the Conference, and are as follows:

FIELDS OF LABOR.	Conf. Budget	General Conf. Budget	West Phila.
Allentown, Linden St.....	\$225	\$225	
Allentown, Sixth St.....	30	60	
Annville	425	500	
Avon	130	200	
Bellegrove	225	200	
Berne	140	205	
Birdsboro	100	75	
Catawissa	200	75	
Centerville	130	100	
Chamber Hill	80	75	
Coatesville	55	50	
Columbia	400	375	
Cressona	105	100	
Denver	200	175	
Elizabethtown	185	250	
Ephrata	210	350	
Florin	110	100	
Grantville	200	100	
Halifax	160	130	
Harrisburg, First	400	400	
Harrisburg, Otterbein, ...	350	325	
Harrisburg, Derry St.....	430	750	
Harrisburg, State St.....	150	250	
Harrisburg, Sixth St.....	260	300	
Hershey	100	175	
Highspire	225	225	

CONFERENCE PROCEEDINGS, 1913.

FIELDS OF LABOR.	Conf. Budget	General Conf. Budget	Phila. West
Hillsdale	150	200	
Hopeland	185	200	
Hummelstown	255	375	
Intercourse	160	75	
Iona	130	150	
Jacksonville	115	100	
Jonestown	125	100	
Lancaster, Covenant	500	1,000	
Lancaster, N. Queen St. . .	150	250	
Lancaster, Laurel Hill . . .	15	15	
Lebanon, Salem	525	800	
Lebanon, Trinity	330	350	
Lebanon, Memorial	200	300	
Lebanon, Bethany	90	85	
Lebanon, West	75	75	
Lebanon, Pleasant Hill . . .	130	120	
Lebanon, Hebron	60	100	
Lebanon, Circuit	100	115	
Linglestown	80	75	
Lititz	100	125	
Lykens	175	125	
Lykens Circuit	375	225	
Manheim	200	225	
Manor	180	100	
Middletown	210	225	
Millersburg	105	150	
Mont Clare	95	75	
Mt. Carmel	120	75	
Mt. Joy	205	225	
Mountville	252	350	
Myerstown	200	525	
Neffsville	85	75	
New Holland	250	250	
Northampton	75	50	
Oberlin	250	270	
Palmyra, First	250	270	
Palmyra, Second	80	100	
Penbrook	250	270	
Pequea	170	100	
Philadelphia, Mt. Pisgah. .	150	150	
Philadelphia, West	25	75	
Pinegrove	130	115	
Pottstown	80	75	
Reading, Zion	250	425	
Reading, Trinity	150	250	
Reading, Salem	200	350	
Refton	125	150	
Royalton	110	75	
Schaefferstown	35	75	
Schuylkill Haven	180	350	
Shamokin First	260	360	
Shamokin Circuit	200	300	
Steelton	500	750	
St. John's	200	200	
Sunbury	110	100	
Tremont	25	25	
Tower City	115	175	
Union	115	175	
Valley View	230	200	
Williamstown	100	75	
Totals	\$15522	\$18500	

CONFERENCE PROCEEDINGS, 1913.

The Committee on Applicants and Credentials reported as follows which was adopted:

REPORT OF COMMITTEE ON APPLICANTS AND CREDENTIALS.

We, your Committee on Applicants and Credentials, have examined the applicants referred to us, as per Discipline, and beg to recommend as follows:

First—That Raymond H. Arndt, G. L. Blouch, C. L. Earley, Norman Fake, I. W. Funk, George W. Hallman, John O. Jones, C. R. Longenecker, Lloyd Martin, H. M. Mentzer, John W. Oakes, H. E. Schaeffer, H. A. Smith, H. E. Ulrich, C. Y. Ulrich, C. W. Schwalm, H. F. Boeshore, be granted Annual Conference license to preach.

Second—That H. H. Fertig, not having the required educational qualifications as required by Discipline, but in view of the fact that he has passed a good examination and served a pastorate acceptably, he be referred to this Conference for admission by vote.

Third—That William C. Shoop and J. Warren Kauffman, at their own request, be given letters of dismissal.

Fourth—That G. A. Ritchie, having withdrawn his membership from the Church of the United Brethren in Christ, his name be dropped from the roll of this Conference.

I. E. RUNK,
A. S. LEHMAN,
H. M. MILLER.

The Committee on First Year's Course of Study reported as follows, which was on motion adopted:

REPORT OF COMMITTEE ON FIRST YEAR'S COURSE OF STUDY.

The Committee on First Year's Course of Study examined the following licentiates and graded them as follows:

	Encyclopedic Handbook of the Bible	The Foreign Missionary	Extemporaneous Preaching	U. B. Church History Part I	Making of a Sermon	Sermon
Charles G. White,	90	90	92	91	94	90
P. M. Haldeman,	85	87
O. T. Ehrhart,	95	90
W. E. Shoop,	92	89
C. S. Earley,	80	87	90	78	88	75
J. W. Bomberger,	91	88

We recommend that W. E. Shoop, Charles G. White, P. M. Holdeman, and C. L. Earley pass to the Second Year's Course of Study.

That Clyde A. Lynch, O. T. Ehrhart, Mark G. Holtzman, Titus J. Leibold, P. B. Gible, J. W. Bomberger, Martin Groff, C. E. Rettew, D. E. Young, J. R. MacDonald and O. R. Brooks, be retained in the First Year's Course of Study.

That W. H. Peiffer be referred to his quarterly conference as per Discipline.

That Jacob B. Glick, having completed the course at Bonebrake Theological Seminary, be referred to the Committee on Elder's Orders.

C. A. MUTCH,
M. H. JONES,
J. A. KEIPER,
Committee.

The Committee on Second Year's Course of Study reported as follows, which was on motion adopted.

CONFERENCE PROCEEDINGS, 1913.

REPORT OF COMMITTEE ON SECOND YEAR'S COURSE OF STUDY.

The following licentiates were examined by the Committee on Second Year's Course of Study and graded as follows:

	Encyclopedic Handbook of the Bible	The Preacher	U. B. Church History	Doctrine of the Prophets	Exegetical Studies in Galatians	Exegetical Studies in I and II Tim. and Titus	Sermon
W. E. Shoop,	92	90	95	90	91	90	94
J. F. Brown,	85	83	89	80	82	85	88

We recommend that W. E. Shoop and J. F. Brown pass to the Third Year's Course of Study. That J. L. Ohmacht, A. N. Ulrich, C. H. Holzinger and Ira D. Lowery be retained in the Second Year's Course of Study.

E. O. BURTNER,
H. F. RHOAD,
JOSEPH DAUGHERTY.

The Committee on Third Year's Course of Study reported as follows, which was on motion adopted:

REPORT OF COMMITTEE ON THIRD YEAR'S COURSE OF STUDY.

The Committee on Third Year's Course of Study examined the following licentiates, and graded them as follows:

	The Christian Faith	Psychology	The Christian Pastor	The Elements of the Higher Criticism.	Church History	Amos	Philippians	Sermon
G. W. Hess,	80	80	80	72	70	85	85	80
R. E. Morgan,	92	95	98	90

We recommend that G. W. Hess and R. E. Morgan pass to the Fourth Year's Course of Study.

I. H. ALBRIGHT,
A. G. NYE,
A. K. WIER.

The Committee on Fourth Year's Course of Study reported as follows, which was on motion adopted:

CONFERENCE PROCEEDINGS, 1913.

REPORT OF COMMITTEE ON FOURTH YEAR'S COURSE OF STUDY.

The Committee on Fourth Year's Course of Study examined the following licentiate; and graded him as follows:

	Pedagogical Bible School	The Christian Faith	New Testament Theology	Sermon
R. E. Morgan,	90	80	82	85

R. E. Morgan, having completed the Course of Study, we recommend that he pass to the Committee on Elder's Orders.

S. C. ENCK,
S. S. DAUGHERTY,
J. M. WALTERS,
Committee.

The Committee on Elders' Orders reported as follows, which was on motion adopted:

REPORT OF COMMITTEE ON ELDERS' ORDERS.

The Committee on Elders' Orders examined R. E. Morgan and J. B. Glick, as per Discipline, and found them sound in doctrine. We therefore recommend that they be ordained to the office of elder in the Church of the United Brethren in Christ.

I. H. ALBRIGHT,
L. R. KRAMER,
J. B. FUNK.

The report on "The Bible" was presented by M. H. Jones. It was adopted and is as follows:

Bible Cause.

The Bible is given to us by God. It is His will that the sayings of ancient prophets and apostles should be the lamp for all ages. Therefore He will bless the right reading of the Bible, and He will call us to account for the use we make of it. The Christian believes that "holy scripture containeth all things necessary to salvation." Consequently he has no sympathy with so-called theologians in the free use of their penknives. They cut out of the Bible all that is not in accord with their favorite ideas. St. Paul said, "We can do nothing against the truth, but for it." For the Bible can neither be bound nor burned. It has been cut into fragments, cast into flames, and treated with every conceivable form of opprobrium; but thank God, we have it to-day, a living and mighty factor in the lives of the foremost men and nations throughout the world. In our own Keystone State we now have a law regulating the reading of the Bible in our public schools, requiring each teacher to read at least ten verses from the Bible at the opening of every public school day. With confidence we look forward to the time when "the earth shall be full of the knowledge of the Lord as the waters cover the sea."

The report on Sabbath Schools was presented by Z. A. Weidler, which was adopted. It is as follows:

REPORT ON SABBATH SCHOOLS.

During three years of the past quadrennium, of which we have reports, considerably more than one-half of the persons uniting with the Church on profession of faith have come from the Sunday School, thus verifying the statement that "the Sunday School of to-day is the Church of to-morrow."

The general progressiveness and advanced vision of the church to-day, relating to all the world movements in moral and civic reforms, has largely received its impetus from the many coming into her fold, who have received a

life training in righteousness from the "cradle roll" to full stature in Christ Jesus.

To conserve this force, preserve its usefulness, utilize its power. BE IT RESOLVED,

First, That we place our Sunday Schools in the front line in organization, following the most approved and successful methods that are now in vogue or shall be suggested in teaching, seeking efficiency in spirit, and understanding as well. In results, seeking to lead every Sunday School scholar to Christ and the Church.

Second, That we supply our schools with our own literature, and emphasize its value in indoctrinating a love and loyalty for the Church.

Third, That we extend to Dr. C. W. Brewbaker, our newly elected General Secretary of the Sunday School Board, our hearty co-operation in carrying out his plans and purposes in the Sunday School work of the denomination, so as to give unity of purpose and concentration of effort in maintaining our present high achievements and placing before us "ever onward" as our goal.

The report on Home Missions was presented by S. C. Enck. It was adopted and is as follows:

HOME MISSIONS.

The great and last command of Jesus to his disciples shortly before his ascension was, "But ye shall receive power, after that the Holy Ghost is come upon you; and ye shall be witnesses unto me both in Jerusalem, and in all Judea, and in Samaria, and unto the uttermost part of the earth." Acts 1:8.

The first and most important element was **power**, the **Holy Ghost**. Without these, the work so nobly begun would have ceased.

The second, that which necessarily followed the endowment or infilling by the Holy Ghost was witnessing, bearing glowing testimony to the riches, majesty and glory of Jesus Christ.

And third, the place in which the witnessing was to be done was first, at home, in Jerusalem, the largest and most important city, the metropolis of Palestine; second, in Judea the country surrounding the city of Jerusalem; and third, in the adjoining state or territory and thus they were to continue to bear testimony, making disciples, preaching Christ and him crucified unto the uttermost parts of the earth.

The rock bottom secret of the success of the Church two thousand years ago is equally applicable to-day. The same power, or infilling of the Holy Ghost, is as essential now as then. It behooves the Church to plant and to water, then look to God for the increase.

The program as arranged by Jesus was to begin at home in the largest and most important city, from the city to the surrounding country, then the adjoining state and thus to the uttermost parts of the earth.

I will divide Home Missions into two classes:

1. Local—Those that pertain to or are within the bounds of our Annual Conference.

2. Those that are beyond the bounds of our Conference and pertain to the Church in general throughout the United States.

The success of the foreign work depends upon the general home work. The success of the general home work depends upon the local work wrought within the Conference and local church. People are moving into the cities by thousands. Immigrants come to our shores by the million. Heathen temples are being erected in our cities, so that it is time for the Church to pray for power, and after the Holy Ghost is manifested in the Church that it witness and evangelize, establish churches, and stop the continual loss to the Church of the best and most helpful people who were converted at our altars, who filled some of the most prominent places in our churches with great credit, who moved into the large cities and were lost to God and the Church. The tide is flowing towards the cities, and if the Church means to be a soul saving institution, it must follow the people. We want no less churches in the rural districts, but more in the cities.

Whereas the boundary of the East Pennsylvania Annual Conference comprises such a large and exceedingly promising territory with open doors and opportunities second to none in the United States, with its large and growing cities like Scranton, Pottsville, Wilkes-barre, Easton, Bethlehem, West Chester, Trenton, Camden, Wilmington, etc., in which there is not a single United Brethren Church, and Philadelphia, the third largest city in the Union, with a population of over a million—where hundreds of United Brethren families move every year—with only two United Brethren churches, and they twelve miles apart, with 20,000 United Brethren members living within a distance of one hundred miles of the cities mentioned; and

Whereas, "The speedy christianization of America is the supreme need in the world evangelization" and to which purpose East Pennsylvania Conference contributes about four thousand dollars; THEREFORE BE IT RESOLVED,

First—That the Conference Church Extension and Home Missionary Society is urgently requested to keep an open eye upon the cities within the bounds of the Conference territory and wherever practicable or expedient take steps to organize classes and establish missions. That the pastors are urged to inform the Conference Superintendent whenever families move into cities where there are no United Brethren churches and upon all occasions where there are removals to inform the nearest pastors at once.

Second—That it is the sense of East Pennsylvania Annual Conference to set apart more money and manifest a deeper interest in establishing missions, in obedience to the command of Jesus to begin first at Jerusalem—the large and neglected cities of our Conference territory—then the adjoining and neglected rural districts, towns and villages, and continue to the needy and Christless territory of America as well as to the uttermost parts of the earth.

Third—That it is the sense of this Conference that the General Home Missionary Board return 25 per cent. of its annual receipts from this Conference to the Conference for the support of another mission church in West Philadelphia, which has a population of 300,000, with hundreds of United Brethren families residing in the city—a large number unchurched—and hundreds moving there yearly only to be lost to the Church. Common sense teaches us to husband our forces and put forth every effort to stop the wholesale leakage. That if we give three-fourths of the money collected to the General Board and retain one-fourth for our home work it is more than scriptural.

Fourth—That we hail with delight the success of our missions in the middle West and Pacific coast and pray that during this quadrennium missions may be established in all the leading cities of the United States including the promising cities within the territory of East Pennsylvania Conference. That Home Missionary training classes be organized and literature distributed presenting to the eye as well as to the heart the possibility of winning America for Christ.

Fifth—That it is the sense of this Conference that we pay special attention to our local home work because the general work depends largely upon the success of the local work and the foreign work upon both.

The report on Foreign Missions was presented by G. D. Batdorf and was adopted. It is as follows:

FOREIGN MISSIONS.

The past twelve months have been full of significance for the world kingdom of our Lord. Christian hearts everywhere were deeply stirred by the appeal of the Chinese government to the Christians of that republic to set apart April 27 as a day of special prayer for the nation. Very significant also is the strong fight that continues against the opium traffic and the growing desire for western education.

Our missionaries report that not in the past fifteen years has there been such a readiness to hear the gospel. Our schools are crowded beyond their capacity, and many doors long closed are now open for the entrance of the gospel.

In our other fields also the outlook is such as to challenge the heartiest co-operation of the home churches. For instance, at the last session of our Philippine Mission Conference a forward movement was begun by which the native churches will support their own representative in a mountain district, and in West Africa this year many of the local churches are making a substantial advance towards self-support. The growing strength of the native churches is a cause for real rejoicing. During the last eight years the number of ordained native preachers increased from 4 to 24, the organized churches from 38 to 95, the communicant membership from 1429 to 5484, and the Sunday School enrollment from 2,243 to 6,508.

The Call of the Hour.

The reinforcement of the present staff of foreign workers and larger equipment for the work is the demand of the hour. Seven new workers are needed immediately. There are twenty-seven districts with populations ranging from 10,000 to 100,000 in each of which we have an organized church, but no suitable church building. To make our work permanent, we must help build suitable chapels and churches. In addition, eight missionary residences, one hospital, one dispensary, and four school buildings should be provided just as soon as possible.

The first essential is the raising of the full apportionment for foreign missions and for the other benevolences this year. The support of the present work is all important but we ought not stop there. That is the minimum. **Each charge should aim to do its best.**

By giving our people such facts as are presented in "The Call of China and the Islands" and in the new book, "The Emergency in China" the pressing demands of our foreign work can readily be met.

A mighty volume of prayer, larger gifts of money and the consecration of lives to foreign service will result from the wholehearted observance of the special foreign missionary quarter January, February and March, 1914, with "The New Era in Asia as the Theme." A special effort should be made to permeate every Sunday School with a deep missionary spirit.

The report on Church Erection was presented by A. S. Lehman and was adopted. It is as follows:

REPORT OF CHURCH ERECTION.

The interests of the Church Erection Society of our denomination have been emphasized before this body for forty-four years.

CONFERENCE PROCEEDINGS, 1913.

Its claims have always been heard with interest and our sympathy and support pledged to it as a vital factor in the extension of the Kingdom and our denomination.

We rejoice in its accomplishments, too small indeed when we think of the possibilities for humanity and the church we love, and record our appreciation of the accelerated strength it has gained during the latter, quadrenniums of its history.

We endorse the policy of Church Erection in entering the growing centers of population, whither many of our people have gone, to help them establish The Church of the United Brethren in Christ, as being vital to our Church's conservation and growth.

We realize the funds for Church Erection have been inadequate to meet the opportunities and demands. **THEREFORE BE IT RESOLVED:**

First—That we reaffirm our loyalty to the General Church Erection Society and will do all we can to extend its work, in reporting our local budgets complete, and encouraging special gifts to said Society.

Second—That we express our appreciation of the arduous work done by the retiring secretary, Dr. H. S. Gabel, in bringing the affairs of the society to the high water mark of efficiency and welcome him into the fellowship of our itinerancy.

Third—That we pledge our continued support of Church Erection to the present Secretary, Dr. A. C. Siddall, and express the hope that the interests of the Society may be largely enhanced during his administration.

Fourth—That it is the sense of this Conference that all obligations with the Society be met promptly so as not to embarrass this important branch of our church work.

The Committee on Nominations reported as follows, which was adopted:

REPORT OF COMMITTEE ON NOMINATIONS.

Conference Treasurer

(Vote for One)

S. F. Engle
M. S. Hendricks

Trustees of Anti-Saloon League

(Vote for Two)

B. F. Daugherty
C. A. Snavelly
H. L. Carl
G. W. Parks

Trustees of Conference Preachers Aid Society

(Vote for Six)

D. S. Longenecker
H. M. Miller
C. A. Mutch
H. E. Miller
I. H. Albright
P. L. Haines
A. G. Nye
I. N. Seldomridge
S. S. Daugherty
H. F. Rhoad
A. Lehman
P. H. Balsbaugh

Conference Branch Home Missionary Society

(Vote for Three)

I. Moyer Hershey
Joseph Daugherty
A. S. Lehman
C. E. Boughter
S. E. Rupp
Oliver Mease

Trustees of Russel Biblical Fund

(Vote for Five)

R. S. Arndt
B. M. Brenemen
E. E. Bender
W. W. Fridinger
P. M. Holdeman
A. L. Haeseler
H. M. Trautman
H. S. Kiefer
C. W. Miller
S. L. Rhoads

Professor Russell Biblical Chair

(Vote for One)

G. F. Bierman
D. D. Brandt

Managers of the Conference Missionary and Church Extension Society

(Vote for Three)

D. D. Lowery
G. D. Batdorf
J. A. Lyter
R. R. Butterwick
A. K. Wier
J. A. Keiper

Conference Historical Secretary

(Vote for One)

I. H. Albright
H. F. Rhoad

Editor of Conference Herald

(Vote for One)

D. D. Lowery
M. H. Wert

Sunday School Board

(Vote for Five)

Z. A. Weidler
O. P. Beckley
S. B. Wengert
H. J. Behney
D. L. Kaufman
L. R. Kramer
J. E. Keene
E. E. McCurdy
S. G. Kaufman
Clarence Mease

Court of Appeals

(Vote for Two)

J. A. Lyter
M. H. Jones
S. S. Daugherty
J. A. Keiper

CONFERENCE PROCEEDINGS, 1913.

Publication Board

(Vote for Six)

D. D. Lowery
J. A. Lyter
I. N. Seldomridge
S. C. Enck
G. D. Batdorf
E. O. Burtner
S. F. Engle
H. E. Miller
P. H. Balsbaugh
C. E. Boughter
E. A. G. Bossler
A. Lehman

Conference Branch Foreign Missionary Committee

(Vote for Three)

G. D. Batdorf
S. E. Rupp
C. A. Mutch
A. S. Beckley
D. D. Brandt
E. E. Bender

Committee on Inter-Church Federation

(Vote for Two)

N. L. Linebaugh
D. D. Buddinger
H. M. Miller
C. W. Miller

Conference Finance Commission

(Vote for Three)

D. D. Lowery
S. C. Enck
H. M. Miller
H. S. Gabel
A. K. Wier
B. F. Daugherty

(Vote for Three)

S. F. Engle
Robert Enders
J. H. Stern
D. M. Weidman
S. R. Grabill
H. S. Immel

Conference Commission on Christian Stewardship

(Vote for Three)

S. R. Grabill
J. F. Hilbert
S. C. Snoke
Miss Susan Balsbaugh
Miss Mary Leob
Mrs. J. M. Heagy

Educational Board

(One Year—Vote for One)

J. T. Spangler
O. T. Ehrhart

(Two Years—Vote for One)

R. R. Butterwick
J. M. Walters

(One Year—Vote for One)

A. S. Kreider
H. L. Carl

(Two Years—Vote for One)

C. S. Yeager
H. L. Kinports

Trustees of Lebanon Valley College

(One Year—Vote for Three)

G. F. Breinig
I. B. Haak
John Hunsicker, Sr.
Dr. Seth A. Light
J. L. Straub
M. S. Hendricks

(Two Years—Vote for One)

H. H. Hoy
S. C. Snoke

(Three Years—Vote for Three)

D. D. Lowery
R. R. Butterwick
E. O. Burtner
E. A. G. Bossler
J. G. Stehman
G. A. Stangle

The election for Conference officers and officers of the various Conference societies and organizations resulted as follows:

Conference Treasurer

S. F. Engle

Trustees of Anti-Saloon League

B. F. Daugherty
C. A. Snavely

Trustees of Conference Preachers Aid Society

D. S. Longenecker
H. M. Miller
C. A. Mutch
H. E. Miller
I. H. Albright
A. G. Nye

Conference Branch Home Missionary Society

I. Moyer Hershey
Joseph Daugherty
A. S. Lehman

Trustees of Russel Biblical Fund

R. S. Arndt
B. M. Brenemen
W. W. Fridinger
H. S. Kiefer
S. L. Rhoads

Professor Russell Biblical Chair

G. F. Bierman

Managers of the Conference Missionary and Church Extension Society

D. D. Lowery
G. D. Batdorf
J. A. Lyter

Conference Historical Secretary

I. H. Albright

Editor of Conference Herald

D. D. Lowery

CONFERENCE PROCEEDINGS, 1913.

Sunday School Board

Z. A. Weidler
O. P. Beckley
S. B. Wengert
H. J. Behney
D. L. Kaufman

Court of Appeals

J. A. Lyter
J. A. Keiper

Publication Board

D. D. Lowery
J. A. Lyter
I. N. Seldomridge
S. C. Enck
G. D. Batdorf
S. F. Engle

Conference Branch Foreign Missionary Committee

G. D. Batdorf
S. E. Rupp
A. S. Beckley

Committee on Inter-Church Federation

N. L. Linebaugh
H. M. Miller

Conference Finance Commission

D. D. Lowery
S. C. Enck
H. M. Miller
H. S. Gabel
S. F. Engle
Robert Enders
S. R. Grabill

Conference Commission on Christian Stewardship

S. R. Grabill
S. C. Snoke
Miss Susan Balsbaugh

Educational Board

(One Year)

J. T. Spangler

(Two Years)

R. R. Butterwick

(One Year)

A. S. Kreider

(Two Years)

H. L. Kinports

Trustees of Lebanon Valley College

(One Year)

G. F. Breinig
I. B. Haak
Dr. Seth A. Light

(Two Years)

S. C. Snoke

(Three Years)

D. D. Lowery
R. R. Butterwick
E. O. Burtner

The following recommendation of the Committee on Nominations was also on motion approved:

We recommend that the Alumni trustees of Lebanon Valley College, elected at the last Alumni Association of the said College, be ratified by this Conference.

C. W. Stinespring, Field Agent of the Quincy Orphanage, addressed the Conference in the interest of that institution.

The second day, morning session of the Conference adjourned with the benediction by J. F. Musselman.

—o—

SECOND DAY—AFTERNOON SESSION.

The second day, afternoon session of the Conference convened at 1.30 o'clock. Devotional exercises were conducted by A. H. Boughter.

The following resolutions relative to Reading Trinity church were adopted:

RESOLUTIONS OF AUTHORIZATION TO READING TRINITY CHURCH.

Whereas no definite action has been taken by our Reading Trinity congregation on the matter of permanent location, therefore be it **RESOLVED**:

First—That at such time as shall be deemed best and proper, and in the presence and under the direction of the Conference Superintendent, vote shall be taken by the congregation of said Trinity Church on the question of relocation.

Second—That after favorable action, by majority of said congregation, present and voting, has been taken to relocate, they be hereby authorized to secure a site, subject to the approval of the Conference Church Extension and Missionary Society, for the erection thereon of a church building and parsonage, if the same shall be deemed advisable.

CONFERENCE PROCEEDINGS, 1913.

Third—That said congregation having fully decided to re-locate, as afore-said, the Board of Trustees of said Trinity Church of Reading, Pennsylvania, be and is hereby authorized to dispose of their real estate or church properties in the City of Reading, in part or as a whole, for the best price possible, and the balance of the proceeds arising from said sales, after the payment of all indebtedness against said property, shall be used and expended in the purchase of a new church site and the erection of a new church building and parsonage.

Fourth—That the parsonage property, No. 519 North Ninth Street, in the City of Reading, shall be sold by the Board of Trustees of said parsonage to the best advantage and the proceeds or fund arising from the sale shall be placed in a church or parsonage building fund, and shall be held sacred for that purpose.

I. N. SELDOMRIDGE.

The following report on Education was presented by R. R. Butterwick and was on motion adopted:

REPORT OF COMMITTEE ON EDUCATION.

Man moves Godward no faster than he knows. Progress along all lines is contingent upon knowledge. Knowledge is the combined product of certain educational forces. The character of man's knowledge is determined by the moral standard of the forces responsible for his education.

The function of education is constructive. As such it lies at the basis of all constructive work.

Education is the life of religion. Religion is promoted by processes of education. The potency or impotency of religion depends upon the dissemination of the correct principles of religion as set forth in the Bible.

The mission of the church, like that of the school, is to teach, "Go ye therefore, and make disciples of all nations, . . . teaching them to observe all things whatsoever I commanded you"; "Ye shall know the truth, and the truth shall make you free." "I have yet many things to say unto you, but ye cannot bear them now. How be it when he, the Spirit of truth is come, he shall guide (teach) you unto all the truth."

We agree with Count Okuma of Japan, when he says: "Any nation that neglects the spiritual in the education of its citizens, though it may flourish for a time, must eventually decay. The origin of modern civilization is to be found in the teaching of the Sage of Judea, by whom alone the moral dynamic is supplied."

In the light of the foregoing, the following is apparent:

1. To promote the cause of true religion the Church must foster education.
2. To foster education the Church must equip and maintain institutions of learning which will emphasize the spiritual life; and, at the same time afford such educational facilities as will make her schools the equal, if not superior, in advantage of all other schools. The Church should offer nothing but the best. She is not true to her mission by offering anything less than the best.
3. No school is sufficiently equipped which does not have an income from endowment which, together with its current income, will meet the annual budget of expenses. Therefore be it **RESOLVED**:

First—That in harmony with the action of the Board of Trustees of Lebanon Valley College, we give our hearty approval to the President and Field Secretary of Lebanon Valley College in their effort to secure an endowment fund of Three Hundred Thousand Dollars by June, 1916; and that we invite the representative of the College to our respective fields of labor to canvass for funds for this worthy cause.

Second—That we co-operate with Dr. J. E. Fout, Business Manager of Eonebrake Seminary, Dayton, Ohio, in his efforts to increase the efficiency of our school of the prophets.

Third—That we co-operate with Dr. W. E. Schell, General Secretary of Education, in his efforts to stimulate the cause of Education in our Church.

In connection with the above President Gossard, of Lebanon Valley College, presented his Annual Report, which was adopted; and is as follows:

REPORT OF LEBANON VALLEY COLLEGE.

Believing that education is absolutely essential to the symmetrical development of young people and the Church, we have done our utmost to make Lebanon Valley College the best possible during the year.

With the opening of the year there have been only two changes in the faculty. Prof. C. C. Peters, after his re-election, resigned to accept the superintendency of the schools at Royersford, Pennsylvania. Prof. George H. Pritchard, Physical Director, declined re-election and his place was filled by the election of Prof. Roy Guyer, an alumnus of Lebanon Valley, '08, and also of the Springfield Young Men's Christian Association College, '13.

The College had a splendid opening this Fall, and the outlook for a successful year is very good. In attendance, all departments are increased over last year, and especially in the College and Music departments.

In the four college classes we have the largest enrollment in the history

CONFERENCE PROCEEDINGS, 1913.

of the school. The freshman class numbers more than fifty, and the Women's Dormitory could not accommodate all the young women.

The college atmosphere is splendid, and all the students have expressed their appreciation of the improvements made to the various buildings, under the direction of the Executive Committee.

Improvements

The Engle Conservatory of Music was frescoed throughout, the Women's Dormitory was frescoed and papered with the exception of the parlors, and the Men's Dormitory was frescoed throughout.

By the consent of the Executive Committee, the Alumni Association is placing a Gymnasium in the south end of the Administration Building. This will meet a long-felt need in the student body and is greatly appreciated by them all. This is truly magnanimous on the part of the Alumni.

A cinder track has been made in the athletic field.

The improvements at the farms which had been begun last year were completed early this year.

Condition of Buildings.

The buildings are in a fairly good state of repair, but will need painting on the outside and inside in the near future.

Finances.

Bonded Indebtedness—Our bonded indebtedness is about \$40,000. There are notes and subscriptions amounting to about \$38,000 to offset this. About \$12,000 of this can never be collected.

The amount of money borrowed for repairs last year on the college property and farms plus the deficit in current expenses for two years aggregates about \$25,000.

Some plan must certainly be devised whereby the current expenses can be met each year. The co-operating Conferences must come to the rescue if this is to be done.

Endowment and Current Expense Fund.

At the last regular meeting of Board of Trustees in June the following action was taken with practically all the members of the Board present, "that we do it? **Will** we do it? We can do it if we will. Brethren, if Lebanon ment and Current Expense Fund till June 1916, which marks the fiftieth anniversary of the founding of the College."

This is a big proposition and means hard work and sacrifice. It is a challenge to the intelligence and generosity of the Church in the East. **Can** we do it? **Will** we do it? We can do it if we will. Brethren, if Lebanon Valley College is to live and do its duty as a Church School, then these Conferences must rally to its support, and every member must be interested, not only with good wishes and prayers, but with wishes and prayers in action, which means dollars and cents to pay the bills and to build up a permanent fund.

Every pastor and church member should be made to realize his personal obligations not only to Home Missions, and Foreign Missions and Church Erection and other general church interests, but to Education also, and to Lebanon Valley College in particular.

Individuals, Sunday schools, young peoples' societies, local churches, conferences, should give, not spasmodically, but systematically and regularly, for the need will never end.

The poor should give their mites and the rich of their abundance. Co-operation spells success. Anything else than co-operation spells failure.

We shall be in five years what you plan for to-day. You have the honor to hold the keys. Will you unlock the door? Will you open the way? God grant that you may.

That our Gracious Heavenly Father may raise up many friends to the College, and that it may be put in such a condition so as to fulfill God's will in its existence, and that it may prove a blessing to every United Brethren in the co-operating Conferences is my sincere wish and prayer.

Addresses on Education were delivered by W. E. Schell, D. D., General Secretary of Education, Drs. S. S. Hough, W. R. Funk, Bishop Weekly; on Lebanon Valley College—President Gossard, Drs. Lowery, Runk, Butterwick, Daugherty, Albright, Spangler, Revs. Burtner, Buddinger, Schroyer and Hon. A. S. Kreider; on Bonebrake Theological Seminary, Rev. S. D. Faust, D. D.

The following resolution relative to Lebanon Valley College was adopted:

RESOLVED, That we, the East Pennsylvania Conference Educational Association earnestly ask this Conference to give special attention to the work of education as represented by Lebanon Valley College and that the Bishop and

CONFERENCE PROCEEDINGS, 1913.

Conference Superintendent especially urge every pastor and charge to enter upon a campaign of education and agitation for the endowment of Lebanon Valley College.

The following were referred to the Committee on Applicants and Credentials for reference to the Board of Education for aid: T. J. Leibold, H. E. Schaeffer, Phares B. Gibble, George W. Hallman, Raymond H. Arndt, G. L. Blouch, John W. Oakes, Harry F. Boeshore.

On motion the Recording Secretary of the Conference was appointed secretary of the Committees on Course of Study.

The second day, afternoon session of the Conference adjourned.

—o—

THIRD DAY—MORNING SESSION.

The third day, morning session of the Conference convened at 8.30 o'clock. Devotional exercises were conducted by Z. A. Weidler. After the devotional service, the Conference took a recess until 9.30 o'clock, to give an opportunity to the lay delegates to hold a meeting.

After the recess.

R. E. Morgan and J. B. Glick were referred to the Committee on Elders' Orders.

By general consent the Finance Committee's report was so amended as to make the Conference Superintendent's salary \$2,250 for the coming year.

The Preachers' Aid Society presented the following report and recommended the following appropriations, which were on motion approved:

J. W. Boughter	\$60.00	Mrs. Ella Lehman,	\$50.00
Rev. J. Runk	80.00	Mrs. Annie Light	50.00
Rev. J. Shoop	50.00	Mrs. Joel Light	50.00
Rev. J. Binkley	175.00	Mrs. Cassadella Peters	60.00
Rev. F. J. Butterwick	75.00	Mrs. Mary Uhler	50.00
Rev. U. Gambler	175.00	Mrs. C. O. Lehr	40.00
Mrs. Marie Craumer	60.00	Mrs. Chas. Bauer	25.00
Mrs. S. M. Hummel	50.00	Mrs. J. P. Smith	25.00
Mrs. J. R. Meredith	75.00	Mrs. P. A. Bowman	75.00
Mrs. I. Baltzell	75.00	Mrs. U. S. G. Renn	50.00
Mrs. J. B. Daugherty	50.00	Mrs. H. F. McNelly,	50.00

Upon recommendation of the Committee on Applicants and Credentials the following were recommended to the Board of Education for aid: Titus J. Leibold, H. E. Schaeffer, Phares B. Gibble, George W. Hallman, Raymond W. Arndt, G. L. Blouch, Harry F. Oakes, Harry F. Boeshore, D. E. Young.

The third day, morning session of the Conference adjourned with the benediction by Rev. S. D. Faust, D.D., Prof. in Bonebrake Theological Seminary.

—o—

THIRD DAY—AFTERNOON SESSION.

The third day, afternoon session of the Conference convened at 1.30 o'clock. Devotional services were conducted by Dr. H. S. Gabel.

The following report on The Home was presented by A. L. Haeseler, which was approved.

THE HOME.

The home is one of the greatest problems of to-day, because it occupies such an important place in the making of the community, the church, and the nation.

CONFERENCE PROCEEDINGS, 1913.

The home is the oldest of Divine institutions, dating back to the beginning when God made man, "He made them male and female, and for this cause shall a man leave father and mother, and shall cleave to his wife, and they twain shall be one flesh." "What therefore God has joined together let not man put asunder." Thus marriage and the family are divinely appointed. One cannot exist without the other. Where there is no marriage there is no family and where there is no family there is no home.

Our idea of the home is enlarged and enriched by our knowledge of the Father-hood of God, the mother-hood of God and the Sonship of Christ, giving to us the relationship of the Father to the children, the mother to her children and the children to their parents, so as to accomplish the great purpose of God on the earth. The father stands in relation to the home as its head, attending to law and regulation in the home. The mother with her finer sensitive nature fills the home with warm love and tender affection, the son exercises obedience to the will of his parents. This is God's purpose in the home. This organized institution must be divinely guided if it shall fill its mission in sending out well rounded men and women with strong character to play their part in enriching the morals of society, the stamping out of civil corruption and making the Church what Christ intended it to be, the great soul saving agency in hastening the day when the will of God shall be done as in Heaven so on Earth.

It is impossible for the Church life to rise higher than the home life. The woman who speaks of her Heavenly home in church and makes a hell of her earthly home, becomes a stumbling-block and an encouragement of infidelity to the world of unbelievers. The man who speaks as "with tongues of Angels" in church and talks to his family like a demon, is in need of regeneration by the power of the Holy Spirit.

If the home should lose its prestige and fall short of its mission, what would be the hope of the Church, Society, Government and the welfare of the whole human race. The race would go back to anarchy and barbarism, confusion and chaos.

It behooves us to lay more emphasis on the importance of the home life, so as to maintain the sacredness which it claims. The ideal home in which faith, hope and love abound should be our motto. These three great essentials of the home must abound if it would realize its highest ideal. The sacred fire upon the hearth should burn brightly every day in the year. The family altar should be jealously guarded and encouraged lest it be neglected and become a serious loss to the home and its mission. God's word, the light and guide on life's pathway should be daily and faithfully sought as food and strength, wisdom and guidance for the soul.

It is the duty of every Christian and lover of the home to fight the foes of the home, the divorce evil, the liquor traffic, the social evils and the disrespect of children for their parents. Our sons and daughters should be taught the strength, the sacredness and the life-long binding of the marriage vow. The marriage relationship must be entered into with an overwhelming sense of Divine approval and Divine purpose. They should be taught of the evil of indulging in alcoholic drinks, thereby creating a hatred against the liquor traffic. They should be taught of the gross evil and degenerating effect of infidelity and social impurity upon the individual, the home, the Church and the Nation.

Parental authority should be exercised to avoid disorder and confusion and save our sons and daughters from death. One of the greatest foes of the home is the failure in the execution of parental authority, when children become master and parents servants. This greatly helps to belittle the child's respect and confidence in parents and his conception of the authority and power of God. Many wayward boys and girls might be saved if the homes were controlled by parental authority and example in faith, hope and love.

The following report on the Young People's Society of Christian Endeavor was presented by A. G. Nye and adopted:

REPORT OF COMMITTEE ON YOUNG PEOPLE'S SOCIETY OF CHRISTIAN ENDEAVOR.

The key-note of the Young People's Society of Christian Endeavor is training. We understand it to be a training class for and in the expression of the religious life.

The necessity of such training is recognized by every Christian worker. Continued emphasis should be placed upon the organization of societies where these privileges may be granted. Where they do exist the demand of the times is that they be made more efficient.

The Young People's Society is not an organization by itself as an end, to spend its energy upon itself for its own maintenance. It is an organized means of training, the influence of which is to be spent and felt upon the whole congregation of which it is a part.

Therefore be it RESOLVED,

1. That as pastors and lay-men we seek to direct Christian Endeavor Societies to train for efficient service in all departments of the work of the congregation.

2. That we impress the necessity of loyalty to church interests, of an earnest devotion to prayer and Bible reading, of renouncing worldly attractions, and

CONFERENCE PROCEEDINGS, 1913.

of living the self-surrendered life "for the glory of God and the salvation of men."

3. That courses of study be taken up by our young people whereby they may become better acquainted with the missionary field and its need, and thus be enabled more intelligently to carry out the Master's commission.

4. That we instruct, by precept and example, in the Scriptural method of giving—systematically, proportionately, cheerfully and liberally.

5. That we put forth every effort to make our Junior societies not a kindergarten for children, but a training school for boys and girls.

6. That we continue our support to the Watchword and help to extend its helpfulness by securing a larger circulation.

The report on Publishing Interests was presented by E. A. G. Bossler and was adopted:

REPORT ON PUBLISHING INTERESTS.

A noted lecturer declared recently that the three greatest educative agencies in the world are the pulpit, the press and the theater. This fact embraces their power for good and for evil as well. The power of the press, which is the great agency which immediately concerns us just now, is unquestioned; for it promotes intelligence, furnishes inspiration, moulds public sentiment, and builds character. Some one has truthfully said, "Tell me what you read and I will tell you what you are."

A great reason for its mighty influence is the enormous output of the press. "Of the making of many books there is no end," nor should there be while there are great facts and problems to present and discuss and solve, and while there are millions of minds to be informed, hearts to be inspired, and wills to be swayed for truth and righteousness. Magazines almost beyond computation flood the land, while papers, booklets and tracts are disseminated like the countless falling leaves of Autumn.

RESOLVED, therefore, That we contemplate with genuine pleasure the important place which our Publishing House holds in the great work of the diffusion of intelligence and the building of character; and that we point with just denominational pride to the great building in which our publishing interests are housed, and its splendid equipment; and that we regard this department as one of the greatest material assets of the Church.

That we hereby express once again our utmost confidence in the efficient management of the institution under the fine leadership of our tried and true publishing agent, Dr. W. R. Funk.

That we were moved with profound sorrow at the news of the disastrous flood which swept over the city of Dayton last May with its consequent serious loss to the House; but now sincerely rejoice in its rapid recovery from these disastrous effects; and that we specially commend Dr. Funk, upon whom a great share of the burden fell, for his heroic and masterful dealing with the difficult and trying situation, and that we hereby pledge him our loyal support in the task of reconstruction.

That we commend the editors of our various periodicals, the Religious Telescope, Woman's Evangel, Sunday-School Literature and Conference Herald, for their efficiency and faithfulness in approximating the perfection of excellence in the mechanical construction and matter of these periodicals, and that we will continually strive to support them more generously than ever before.

The Circulation Manager of the Conference Herald reported as follows which was adopted:

REPORT OF CONFERENCE PUBLICATION BOARD.

The Circulation Manager of the Conference Herald is pleased to report that there has been an increase in subscriptions during the year. The number of subscriptions now on the list is 2,684. The appointment having the highest number of subscriptions (112) is Shamokin, A. S. Beckley, pastor. The next highest (92) is Sixth Street, Harrisburg, Pa., P. H. Balsbaugh, pastor. The third highest (85) Oberlin, Pa., C. E. Boughter, pastor. Sixty-one appointments fell below their apportionment, and 32 fell below their number of last year. Twenty-four exceeded their apportionment and thirty-one had an increase over last year. About 300 more subscriptions would put the Conference Herald in a splendid financial condition, and materially help in the publication of the Conference Minutes.

I. N. SELDOMRIDGE,
Circulation Manager.

In connection with the above the following recommendation of the Board of Publication was approved:

The Board of Publication recommends that hereafter the expense of distributing the Conference Minutes be paid from the Contingent Fund of the Conference.

CONFERENCE PROCEEDINGS, 1913.

The following report on Temperance was presented by Oliver L. Mease, and after an address by E. J. Moore, D.D., State Superintendent, of the Anti-Saloon League, it was adopted:

REPORT ON TEMPERANCE.

Intemperance, especially as it relates to intoxicating liquors, is a monstrous evil, eating out the vitals of nations, destroying the happiness and peace of our homes, damning men's souls by the thousands and tens of thousands, and lading the whole social atmosphere with the stench of its immorality and the multiplicity of its illicit progeny. Of the saloon Dr. Robert J. Burdette has said: "I do not know one good thing about the saloon. It is an evil thing in all its history to commend it to good men. It breaks the laws of God and man; it desecrates the Sabbath; it profanes the name of religion; it defies public order; it tramples under foot the tenderest feelings of humanity; it is a moral pestilence that blights the very atmosphere of town and country; it is a stain upon honesty; a blur upon purity; a clog upon progress; a check upon the noble impulses; it is an incentive to falsehood, deceit and crime. From such a hateful fountain can there ever flow a clear stream?"

In view of the fact that such is the evil of intemperance, **be it RESOLVED:**

1. That God's people pray unto their Lord more earnestly for the speedy removal of this curse from our midst.
2. That as a Conference we pledge our most hearty support to the Anti-Saloon League and every other agency that is working consistently for the overthrow of the saloon.
3. That we rejoice in the good news that the Anti-Saloon League proposes to launch a campaign for national prohibition at the Jubilee Convention to be held at Columbus, November 10-13, and that we give this advanced movement our heartiest support.
4. That we continue to preach against intemperance in all of its forms.

The lay delegates of the Conference presented the following report which was on motion adopted:

REPORT OF THE LAY DELEGATES.

A meeting of the lay delegates of the 114th session of the East Pennsylvania Conference was held with H. L. Kinports, of Annville, presiding. Dr. Lowery, Conference Superintendent, addressed the meeting and gave helpful suggestions.

The various methods of finance used by the churches represented were discussed.

The weekly system of giving was encouraged. Thirty-seven of the congregations represented in the meeting use the weekly system and eight do not use it. On motion the budget system of finance as ordered by the General and Annual Conference was endorsed. The Bishop was commended for the spiritual note he sounded throughout the Conference.

It was recommended that each charge pay the entertainment expenses of its pastor and delegate to the Annual Conference.

It was recommended to the Conference that the pastors who shall be appointed to the different charges be instructed to spend as much time as possible on their charges.

The following resolution was presented to the laymen and unanimously adopted:

In view of the pressing need of Lebanon Valley College for an Endowment Fund, and in view of the full information concerning the College now in possession of the Conference, and because of the interest aroused, and in harmony with the resolutions adopted by Conference on the subject, **therefore be it**

RESOLVED, That a committee composed of Bishop W. M. Weekley, D.D., Rev. W. E. Schell, D.D., Rev. D. D. Lowery, D.D., Rev. W. H. Washinger, D.D., Rev. A. S. Hammack, D.D., Rev. D. D. Gossard, D.D., be and is hereby appointed to take full charge of and formulate and execute plans which will result in the raising of an adequate endowment fund for Lebanon Valley College at the earliest possible date.

Be it further RESOLVED, That a copy of the above resolution be presented to the Pennsylvania Annual Conference with a request for its adoption at their session.

KATIE COLDREN,
Secretary.

The Auditing Committee reported as follows, which was adopted:

REPORT OF AUDITING COMMITTEE.

Allentown, October 3, 1913.

This is to certify that we examined all the accounts of the Conference Treasurer and find the same correct, and the books and accounts are all in good shape.

GEORGE F. BREINIG,
M. H. JONES.

CONFERENCE PROCEEDINGS, 1913.

REPORT OF TREASURER OF CONFERENCE PUBLICATION BOARD.

1912		Dr.		
Sept. 23.	To balance, cash,			\$31 94
Oct. 16.	To cash Herald subscriptions for September,			48 75
Nov. 11.	To cash Herald subscriptions for October,			45 50
Dec. 10.	To cash Herald subscriptions for November,			40 00
1913				
Jan. 8.	To cash Herald subscriptions for December,			27 25
Feb. 10.	To cash Herald subscriptions for January,			131 50
Mar. 8.	To cash Herald subscriptions for February,			81 00
Apr. 8.	To cash Herald subscriptions for March,			52 00
May 20.	To cash Herald subscriptions for April,			36 75
June 9.	To cash Herald subscriptions for May,			43 50
July 8.	To cash Herald Subscriptions for June,			56 25
Aug. 12.	To cash Herald subscriptions for July,			40 75
Sept. 10.	To cash Herald subscriptions for August,			26 00
Oct. 1.	To cash for advertising in Herald and Minutes,			245 16
Total,				\$906 35
1912		Cr.		
Nov. 4.	By cash Central Publishing Company,			\$43 25
Nov. 4.	By cash Central Publishing Company,			43 83
1913				
Feb. 11.	By cash Central Publishing Company,			44 40
Feb. 11.	By cash Central Publishing Company,			43 35
Feb. 11.	By cash Central Publishing Company,			44 30
Feb. 11.	By cash Central Publishing Company,			44 54
Feb. 11.	By cash Central Publishing Company,			44 53
June 5.	By cash Central Publishing Company for Minutes,			291 50
June 5.	By cash Central Publishing Company,			44 67
June 5.	By cash Central Publishing Company,			45 68
July 8.	By cash Central Publishing Company,			46 01
July 8.	By cash Central Publishing Company,			45 43
Aug. 12.	By cash Central Publishing Company,			44 57
Sept. 23.	By cash express and postage,			32 54
Sept. 23.	By cash Commission and Board expenses,			14 32
Oct. 1.	By cash balance,			33 43
Total,				\$906 35
Oct. 1.	To balance,			33 43
1913		Liabilities.		
Oct. 1.	Bills payable,			179 57
1913		Resources.		
Oct. 1.	Cash balance,			\$33 43
Oct. 1.	Outstanding ads. due,			122 50
Oct. 1.	Liabilities above resources,			23 64
Total,				\$179 57

S. F. Engle, the Conference Treasurer, reported as follows, which was on motion approved.

REPORT OF THE CONFERENCE TREASURER.

1912		Dr.		
Oct. 6.	To cash balance,			\$2,694 02
1913				
May 5.	To cash Reading Salem,			500 00
May 31.	To cash Mt. Pisgah paid on loan,			25 00
June 19.	To cash Bill Posting Co.,			30 00
July 17.	To cash Reading Trinity,			2,000 00
Oct. 1.	To cash Church Erection Society,			7,000 00
Oct. 1.	To cash loans during the year,			20,950 00
Oct. 1.	To cash Lebanon Hebron paid on loan,			660 00
Oct. 1.	To cash Interest on loans,			325 00
Oct. 1.	To cash U. B. Publishing House,			266 94
Oct. 1.	To cash Widow Snyder Fund,			20 00
Oct. 1.	To cash Preachers' Aid interest,			106 30
Oct. 1.	To cash West Philadelphia paid on tents,			87 25
Oct. 1.	To cash Conference Collections,			33,774 00
Total,				\$68,438 51
1913		Cr.		
Oct. 2.	By cash Dayton Flood Sufferers,			\$51 50
Oct. 2.	By cash U. B. Publishing House damages,			88 15
Oct. 2.	By cash Lebanon Valley College,			26 00
Oct. 2.	By cash Cowden Memorial Chair,			231 62
Oct. 2.	By cash West Philadelphia,			2,299 30
Oct. 2.	By cash Preachers Aid,			1,375 00

CONFERENCE PROCEEDINGS, 1913.

Oct. 2.	By cash Minimum salary,	1,172.50
Oct. 2.	By cash Contingent Fund,	1,376 73
Oct. 2.	By cash West Philadelphia lot and transfer,	8,101 38
Oct. 2.	By cash Paid on West Philadelphia Church,	15,870 00
Oct. 2.	By cash Interest paid,	1,231 50
Oct. 2.	By cash Children's Day Offering,	78 95
Oct. 2.	By cash Y. P. C. E.,	5 80
Oct. 2.	By cash W. I. Hess note,	500 00
Oct. 2.	By cash Notes paid Valley Trust Co.,	9,150 00
Oct. 2.	By cash Lebanon Valley College,	2,000 00
Oct. 2.	By cash Superintendent's Salary,	2,000 00
Oct. 2.	By cash Appropriations,	3,616 67
Oct. 2.	By cash Quincy Orphanage,	1,105 51
Oct. 2.	By cash Parsonage Fund,	5 00
Oct. 2.	By cash Home Missions,	3,492 90
Oct. 2.	By cash Home Missions Special,	137 00
Oct. 2.	By cash Church Erection,	1,008 17
Oct. 2.	By cash Church Erection Special,	25 00
Oct. 2.	By cash Foreign Missions,	7,976 22
Oct. 2.	By cash Benevolences,	1,725 00
Oct. 2.	By cash Balance,	3,788 61
Total,		\$68,438 51
Oct. 8.	To cash balance,	3,788 61

Conference Missions and Church Extension.

1912.		Cr.	
Oct. 2.	To Cash Preachers' Aid,	\$900 00	
Oct. 2.	To cash Contingent Fund,	600 00	
Dec. 10.	To cash Lebanon Valley College,	1,000 00	
1913.			
Apr. 1.	To cash Interest on individual loans,	1,004 20	
Apr. 4.	To cash Valley Trust Co. notes and interest,	4,107 30	
Apr. 29.	To cash W. I. Hess note and interest,	507 50	
Apr. 29.	To cash Lebanon Valley College,	500 00	
May 22.	To cash Lebanon Valley College,	500 00	
July 14.	To cash Valley Trust Co. note and interest,	5,013 75	
Sept. 13.	To cash Interest on Preachers' Aid note,	25 00	
Sept. 24.	To cash Superintendent's salary,	2,000 00	
Sept. 24.	To cash Appropriations,	3,591 67	
Oct. 1.	To cash Interest on individual loans,	73 75	
Oct. 1.	To cash Individual loan paid,	150 00	
Oct. 1.	To cash Appropriation Contingent Fund,	800 00	
Oct. 1.	To cash Special appropriation	25 00	
Oct. 1.	To cash Bishop's salary,	825 00	
Oct. 1.	To cash Bonebrake Seminary,	500 00	
Oct. 1.	To cash Educational Beneficiary,	200 00	
Oct. 1.	To cash Sunday School General Fund,	200 00	
Oct. 1.	To cash Appropriation minimum salary,	1,172 50	
Oct. 1.	To cash Paid on West Philadelphia building & lot,	23,971 38	
Total,		\$47,667 05	
1912.		Dr.	
Oct. 2.	By cash Balance,	\$1,366 62	
Nov. 9.	By cash Interest Allentown Sixth St.,	37 50	
Nov. 13.	By cash Loan Valley Trust Co.,	500 00	
1913.			
Jan. 13.	By cash Loan W. I. Hess,	500 00	
Apr. 1.	By cash Loan Valley Trust Co.,	7,500 00	
Apr. 1.	By cash Paid on lot by Lebanon Hebron,	160 00	
May 5.	By cash Individual loans,	4,950 00	
May 31.	By cash Reading Salem loan and interest,	525 00	
June 3.	By cash Mt. Pisgah loan,	25 00	
June 10.	By cash Loan Valley Trust Co.,	1,500 00	
June 19.	By cash Loan paid by Lebanon Hebron,	400 00	
July 8.	By cash Bill Posting Co.,	30 00	
July 14.	By cash Loan Valley Trust Co.,	3,500 00	
July 17.	By cash Loan Church Erection Society,	5,000 00	
July 17.	By cash Loan paid by Reading Trinity,	2,000 00	
July 28.	By cash Interest paid by Manheim,	100 00	
Aug. 14.	By cash Interest paid by Millersburg,	85 00	
Sept. 10.	By cash Loan Daniel Engle,	500 00	
Oct. 1.	By cash Loan Valley Trust Co.,	2,000 00	
Oct. 1.	By cash Conference collections,	14,771 54	
Oct. 2.	By cash Loan and interest paid by Lebanon Hebron,	140 00	
Oct. 2.	By cash Loan Church Erection Society,	2,000 00	
Oct. 2.	By cash Interest Allentown Sixth St.,	37 50	
Oct. 2.	By cash By balance,	38 89	
Total,		\$47,667 05	
Oct. 2.	By cash balance,	38 89	

CONFERENCE PROCEEDINGS, 1913.

Church Erection.

1913.			
Oct.	1.	By cash collections,	1,008 17
1912.		Dr.	
Dec.	20.	To cash Dr. Gabel,	\$15 00
1913.			
Mar.	20.	To cash Dr. Gabel,	106 00
Apr.	11.	To cash Dr. Gabel,	240 58
Apr.	20.	To cash Dr. Gabel,	61 91
June	23.	To cash Dr. Gabel,	172 15
Oct.	2.	To cash L. O. Miller,	412 53
			\$1,008 17

Church Erection Seattle.

Feb.	20.	To cash Roland note Reading Zion,	\$25 00
1913.		Dr.	
Feb.	20.	To cash L. O. Miller,	\$25 00

West Philadelphia Church Building.

1913.		Dr.	
Jan.	13.	To cash lot and title insurance and taxes,	\$8,101 38
June	18.	To cash Sommer and Son,	450 00
Aug.	16.	To cash Insurance (\$15,000.00),	120 00
Sept.	8.	To cash A. Whitehead, contractor,	13,950 00
Sept.	8.	To cash Frederick Sabin and Co.,	750 00
Sept.	8.	To cash George A. Savage, Architect,	600 00
			\$23,971 38

Foreign Missions.

1913.		Dr.	
Oct.	1.	By cash Foreign Missions, general,	\$6,940 81
Oct.	1.	By cash Foreign Missions, Africa,	433 19
Oct.	1.	By cash Foreign Missions, Porto Rico,	507 22
Oct.	1.	By cash Foreign Missions, Albert Academy,	45 00
Oct.	1.	By cash Foreign Missions, China,	50 00
Total,			7,976 22

1912.		Dr.	
Dec.	20.	To cash Dr. Hough,	\$493 20
1913.			
Mar.	25.	To cash Dr. Hough,	1,465 94
June	20.	To cash Dr. Hough,	1,262 87
Oct.	1.	To cash L. O. Miller,	4,754 21
Total,			\$7,976 22

Home Missions.

1913.		Cr.	
Oct.	1.	By cash special Rev. Renn,	\$25 00
Oct.	1.	By cash Collections,	3,467 90
Total,			3,492 90

1912.		Dr.	
Dec.	20.	To cash Dr. Whitney,	\$358 24
1913.			
Mar.	25.	To cash Dr. Whitney,	916 51
Apr.	22.	To cash Dr. Whitney,	43 00
June	23.	To cash Dr. Whitney,	248 38
Oct.	2.	To cash L. O. Miller,	1,926 77
Total,			3,492 90

Home Missions Special.

1912.		Cr.	
Dec.	20.	By cash Penbrook,	\$32 00
Dec.	20.	By cash Harrisburg Sixth St.,	100 00
1913.			
Apr.	20.	By cash Rev. and Mrs. C. W. Miller,	5 00
Total,			\$137 00

CONFERENCE PROCEEDINGS, 1913.

1912.		Dr.	
Dec. 16.	To cash Dr. Whitney,		\$132 00
1913.			
	L. O. Miller,		5 00
	Total,		\$137 00

West Philadelphia.

1912.		Cr.	
Oct. 2.	By Balance,		\$356 70
1913.			
July 23.	By cash Part payment on tent,		87 25
Oct. 1.	By cash Collections,		4,770 64
	Total,		\$5,214 59

1913.		Dr.	
Oct. 2.	To cash Dr. Enck's salary,		1,500 00
Oct. 2.	To cash Rent,		336 00
Oct. 2.	To cash Tent and chairs,		254 17
Oct. 2.	To cash Moving and traveling expenses,		209 13
Oct. 2.	To cash Balance due West Philadelphia,		2,915 29
	Total,		\$5,214 59
Oct. 2.	By Balance,		\$2,915 29

Young People's Christian Endeavor.

1913.		Cr.	
June 20.	By cash Avon,		\$1 90
June 20.	By cash New Holland,		3 90
			\$5 80

1913.		Dr.	
	L. O. Miller,		\$5 80

Preachers' Aid.

1912.		Cr.		
Sept. 8.	To cash Balance,		\$273 39	
Oct. 9.	By Appropriation,		900 00	
1913.				
Jan. 29.	By cash U. B. Publishing House,		266 94	
June 10.	By cash Widow Snyder Fund,		20 00	
Sept. 18.	By cash Interest,		106 30	
			\$1,566 63	

1913.		Dr.		
Oct. 2.	To cash appropriation,		\$1,375 00	
Oct. 2.	To cash Balance,		191 63	
			\$1,566 63	
Oct. 2.	By cash balance,			\$191 63

Minimum Salary.

		Cr.	
Oct. 1.	By cash Appropriation for Minimum Salary,		\$1,172 50

1912.		Dr.	
Oct. 4.	To cash Rev. William Beach,		\$63 00
1913.			
Oct. 2.	To cash Rev. L. R. Kramer,		80 00
Oct. 2.	To cash Rev. S. G. Hass,		100 00
Oct. 2.	To cash Rev. Clifford A. Funk,		81 00
Oct. 2.	To cash Rev. B. M. Breneman,		18 00
Oct. 2.	To cash Rev. H. M. Trautman,		100 00
Oct. 2.	To cash Rev. J. Francis Smith,		96 00
Oct. 2.	To cash Rev. J. B. Funk,		100 00
Oct. 2.	To cash Rev. G. W. Hess,		100 00
Oct. 2.	To cash Rev. R. S. Arndt,		138 00
Oct. 2.	To cash Rev. James E. Keene,		100 00
Oct. 2.	To cash Rev. R. E. Morgan,		46 50
Oct. 2.	To cash Rev. William Beach,		150 00
			\$1,172 50

Contingent Fund.

		Cr.	
Oct. 2.	By cash Balance,		\$697 31
Oct. 2.	By cash Appropriation,		600 00
1913.			
Oct. 1.	By cash Appropriation,		800 00
			\$2,097 31

CONFERENCE PROCEEDINGS, 1913.

1912.	Dr.		
Oct. 2.	To cash Recording Secretaries and expenses,	\$90	53
Oct. 2.	To cash Statistical Secretaries and expenses,	36	51
Oct. 2.	To cash Press Committee and expenses,	17	10
Oct. 2.	To cash Treasurer's salary,	150	00
Oct. 25.	To cash Printing and counting ballots,	31	87
1913.			
Apr. 16.	To cash General Conference expenses,	750	00
July 18.	To cash Taxes on Harrisburg lot,	53	54
Oct. 1.	To cash Board expenses,	152	09
Oct. 1.	To cash Printing and postage,	82	59
Oct. 1.	To cash Bond of Treasurer,	12	50
Oct. 2.	To cash Balance,	720	58
		\$2,097	31
Oct. 2.	By cash balance,	\$720	58

Parsonage Fund.

1913.	Cr.		
July 20.	By cash Harrisburg Derry St.,		\$5 00
1913.			
Sept. 10.	To cash L. O. Miller,		\$5 00

Quincy Orphanage.

1912.	Cr.		
Dec. 20.	By cash Manor,	\$23	00
Dec. 20.	By cash Shamokin First,	50	00
1913.			
Jan. 20.	By cash Steelton,	162	62
Jan. 20.	By cash Valley View,	30	42
Jan. 20.	By cash Lititz,	5	50
Jan. 20.	By cash Highspire,	20	00
Jan. 20.	By cash Allentown Sixth Street,	5	00
Jan. 20.	By cash Mt. Joy,	40	00
Jan. 20.	By cash Lebanon Pleasant Hill,	8	00
Jan. 20.	By cash Harrisburg Derry Street,	46	25
Jan. 20.	By cash Annville,	82	64
Jan. 20.	By cash Avon,	3	00
Jan. 20.	By cash Denver,	6	92
Jan. 20.	By cash Hummelstown,	45	10
Jan. 20.	By cash Oberlin,	12	35
Jan. 20.	By cash Lykens,	13	78
Jan. 20.	By cash Iona,	22	22
Jan. 20.	By cash Lebanon Pleasant Hill on notes,	17	00
Jan. 20.	By cash Millersburg,	11	31
Jan. 20.	By cash Hopeland,	8	00
Jan. 20.	By cash Elizabethtown,	15	50
Jan. 20.	By cash Schuylkill Haven,	15	15
Jan. 20.	By cash Harrisburg State Street,	28	68
Jan. 20.	By cash New Holland,	25	00
Jan. 20.	By cash Pinegrove,	20	50
Jan. 20.	By cash Jacksonville,	13	25
Jan. 20.	By cash Centerville,	6	55
Feb. 20.	By cash Mountville,	36	12
Feb. 20.	By cash Lancaster North Queen Street,	19	25
Feb. 20.	By cash Reading Trinity,	5	00
Feb. 20.	By cash Neffsville,	8	00
Feb. 20.	By cash Florin,	5	00
Feb. 20.	By cash Cressona,	8	50
Feb. 20.	By cash Palmyra Second,	5	00
Feb. 20.	By cash Intercourse,	10	00
Feb. 20.	By cash Lebanon Memorial,	16	10
Feb. 20.	By cash Reading Zion,	25	45
Feb. 20.	By cash Penbrook,	25	00
Feb. 20.	By cash Refton,	20	00
Feb. 20.	By cash Lancaster Covenant,	25	00
Feb. 20.	By cash Berne,	11	00
Feb. 20.	By cash Union,	30	00
Mar. 21.	By cash Bellegrove,	24	00
Mar. 21.	By cash Mt. Carmel,	3	00
Mar. 21.	By cash Reading Salem,	19	55
Mar. 21.	By cash Halifax,	15	59
Apr. 20.	By cash Lebanon Bethany,	19	33
July 20.	By cash Schaefferstown,	12	14
Sept. 20.	By cash Harrisburg First,	5	00
Sept. 27.	By cash Allentown Linden Street,	5	00
Oct. 1.	By cash Harrisburg Otterbein,	5	00
Oct. 1.	By cash Schaefferstown,	4	39
Oct. 1.	By cash Birdsboro,	5	35
Total,		\$1,105	51

CONFERENCE PROCEEDINGS, 1913.

1913.		Dr.		
Jan. 20.	To cash Rev. Kitzmiller,		\$30	00
Jan. 21.	To cash Dr. Washinger,		647	01
Mar. 20.	To cash Dr. Washinger,		315	52
May 1.	To cash Dr. Washinger,		27	55
July 5.	To cash Dr. Washinger,		20	00
Sept. 10.	To cash Dr. Washinger,		26	51
Oct. 2.	To cash C. W. Stinespring,		38	92
Total,				\$1,105 51

U. B. Dayton Flood Sufferers.

1913.		Cr.		
Apr. 20.	By cash Pequea,		\$6	50
June 20.	By cash Harrisburg Derry Street,		35	00
June 20.	By cash Palmyra First,		10	00
				\$51 50
1913.		Dr.		
May 1.	To cash L. O. Miller,		\$6	50
June 23.	To cash L. O. Miller,		45	00
				\$51 50

U. B. Publishing House Damages.

1913.		Cr.		
Apr. 20.	By cash Pequea,		\$10	00
Apr. 20.	By cash Annville,		26	10
May 20.	By cash Jonestown,		9	00
May 20.	By cash Hopeland,		5	00
May 20.	By cash Tower City,		3	00
May 20.	By cash Allentown Linden Street,		8	05
June 20.	By cash Harrisburg Derry Street,		25	00
Sept. 20.	By cash Cressona,		2	00
				\$88 15
1913.		Dr.		
May 1.	To cash L. O. Miller,		\$36	10
June 23.	To cash L. O. Miller,		50	05
Oct. 2.	To cash L. O. Miller,		2	00
				\$88 15

Lebanon Valley College.

1913.		Cr.		
Aug. 20.	By cash St. John,		\$1	00
Oct. 1.	By cash Allentown Linden Street,		20	00
Oct. 1.	By cash Harrisburg Otterbein,		5	00
				\$26 00
1913.		Dr.		
Sept. 8.	To cash Lebanon Valley College,		\$1	00
Oct. 2.	To cash Lebanon Valley College,		25	00
				\$26 00

Cowden Memorial Chair.

1913.		Cr.		
Mar. 20.	By cash Palmyra Second,		\$10	00
Apr. 20.	By cash Penbrook,		9	00
Apr. 20.	By cash Lancaster North Queen Street,		5	00
Apr. 20.	By cash Lebanon Hebron,		3	75
Apr. 20.	By cash Pequea,		5	00
Apr. 20.	By cash Valley View,		30	00
May 20.	By cash Annville,		26	00
May 20.	By cash Elizabethtown,		7	22
May 20.	By cash Lebanon Bethany,		2	00
May 20.	By cash Shamokin First,		4	50
May 20.	By cash Tower City,		5	00
June 20.	By cash Harrisburg Derry Street,		20	00
June 20.	By cash Sunbury,		2	25
June 20.	By cash Mountville,		10	00
June 20.	By cash Hummelstown,		40	20
June 20.	By cash Palmyra First,		10	00
Aug. 20.	By cash Lancaster Covenant,		13	25
Aug. 20.	By cash Lebanon Salem,		18	00
Oct. 2.	By cash Reading Zion,		5	00
Oct. 2.	By cash Lebanon West,		5	45
				\$231 62

CONFERENCE PROCEEDINGS, 1913.

1913.		Dr.		
May	1.	To cash L. O. Miller,	\$62	75
June	23.	To cash L. O. Miller,	127	17
Sept.	8.	To cash L. O. Miller,	31	00
Oct.	2.	To cash L. O. Miller,	10	70
				\$231 62

Children's Day Offerings.

1913.		Cr.		
June	20.	By cash Harrisburg Sixth Street,	\$5	00
June	20.	By cash Allentown Linden Street,	2	70
June	20.	By cash Annville,	16	75
June	20.	By cash Lancaster North Queen Street,	5	50
June	20.	By cash Tower City,	2	30
July	20.	By cash Lebanon Hebron,	3	50
July	20.	By cash Penbrook,	3	00
July	20.	By cash Shamokin Circuit,	5	00
July	20.	By cash Lykens,	4	10
Aug.	20.	By cash Oberlin,	7	25
Aug.	20.	By cash Lancaster Covenant,	10	00
Aug.	20.	By cash St. John,	2	00
Aug.	20.	By cash Halifax,	5	00
Oct.	1.	By cash Mont Clare,	2	51
Oct.	1.	By cash Philadelphia, Mt. Pisgah,	4	34
				\$78 95

		Dr.		
June	23.	To cash L. O. Miller,	\$29	95
Sept.	8.	To cash L. O. Miller,	42	15
Oct.	2.	To cash L. O. Miller,	6	85
				\$78 95

RESOURCES AND LIABILITIES.

Resources.

To Notes—				
	Millersburg,	\$1,700	00	
	Cleona,	500	00	
	Sunbury,	1,100	00	
	Lebanon Valley College,	300	00	
	Lebanon St. John,	390	00	
	Allentown Sixth Street,	1,500	00	
	Reading Memorial,	1,697	91	
	Harrisburg Sixth Street,	4,000	00	
	Lebanon West,	50	00	
	Manheim,	2,000	00	
	Coatesville,	2,400	00	
	Lebanon Hebron,	1,660	00	
	Philadelphia Mt. Pisgah,	2,007	02	
				\$19,304 93
To Mortgage,	Preachers' Aid Estate,	2,000	00	
To Real Estate—	Harrisburg Lot,	\$7,000	00	
	West Philadelphia Lot,	8,000	00	
				15,000 00
To Other Resources—	Amount paid on West Philadelphia Church,	\$15,971	38	
	Interest due on notes,	151	75	
				16,123 13
To Cash—	Cash Balance on hand,	\$3,788	61	
Total,				\$56,216 67

Liabilities.

To notes bearing 6 per cent. interest,	\$6,000	00	
To notes bearing 5 per cent. interest,	25,850	00	
To notes non-interest bearing,	7,000	00	
To mortgage Harrisburg lot 5 per cent.,	3,000	00	
To book account St. Paul,	1,261	61	
To book account West Philadelphia,	2,915	29	
To resources above liabilities,	10,189	77	
			\$56,216 67

S. F. Engle, the Conference Treasurer, presented a bond for \$5,000, which was, on motion, accepted. His salary was fixed at \$150.

The Conference Missionary and Church Extension Society reported as follows through its secretary, T. G. Spangler, which was adopted:

CONFERENCE PROCEEDINGS, 1913.

REPORT OF THE CONFERENCE MISSIONARY AND CHURCH EXTENSION SOCIETY.

The conference year which has just closed, we are pleased to report, has been one of many blessings to our Missions. All made progress, with the exception of a few, in reducing their indebtedness; and quite a number made commendable gains in membership. Harmony exists among all, and it is therefore safe to say that the spiritual side was well looked after and promoted.

The chief concern of the Board was to meet the expectations of the Conference relative to West Philadelphia, and to the accomplishment of that end its energies were mainly directed.

A meeting of the Board was held in Philadelphia on November 4, following the adjournment of Conference, and the pastor, who had been on the ground since then, looked up available sites south of Market street and west of Fifty-eighth street.

There were two lots on Catherine street, the location of which appealed to the Board as being very desirable; but in order to get the judgment of some of the prospective members, who are residents in that section, the matter was referred to the pastor and such members; the result to be reported to the Board. This report was made to the Board at a meeting held on November 11, which was unanimously in favor of the lot on Fifty-ninth street and Catherine street. It was therefore ordered that this 72 by 156 foot lot be purchased for \$8,000.00.

The financial part of the deal was referred to the Conference Treasurer, who concluded it very satisfactorily. In order not to make a mistake in the title, the Trust Company of Philadelphia was made the attorney to secure title, so that we are absolutely sure of having a good title. Mr. George E. Savage, of Philadelphia, an experienced architect in church work, was employed to prepare plans and specifications for the complete plans, which was done without delay, and after a careful examination by the Board and a final perfecting of them, the plans for the chapel and parsonage were adopted and bids solicited.

The bids were opened at a meeting called for that purpose on March 28, and the contract awarded to A. Whitehead, the lowest bidder, for \$24,550.00. The heating to Fred. Sabin & Co., for \$1,895.54; the plumbing to L. J. Sommer & Son, for \$1,025.00.

The General Church Erection Board very generously made a loan of \$7,000.00 to the enterprise.

The work is progressing as rapidly as possible and is nearing completion.

Thus far all obligations have been met promptly and satisfactorily to the contractors.

At a meeting held at Mt. Gretna a plan was suggested and adopted to finance the final completion of the project. The plan is to issue a mortgage for \$15,000.00 and float 5 per cent. interest bearing bonds, dated April 1, 1914, redeemable in five and payable in ten years, the interest to be paid annually.

It was hoped that the lot known as the Harrisburg Sixth Street Church Lot could be sold during the year, but no adequate offer being received, it remains unsold. The section is being rapidly built up and hence the time cannot be far distant when a sale can be made to advantage.

The Reading Otterbein and Trinity Church property interests at Reading received attention and were adjusted to the satisfaction of all concerned.

The third day, afternoon session of the Conference adjourned with the benediction by C. W. Stinespring.



FOURTH DAY—MORNING SESSION.

The fourth day, morning session of the Conference convened at 8.30 o'clock. Devotional exercises were conducted by L. R. Kramer.

The Minutes of the third day's sessions were read and approved.

Dr. Funk made a statement relative to the Otterbein Home, and Dr. Schell relative to the duties of the General Secretary of Education.

The following offerings were taken during this session of the Conference.

For the Page, \$6.61
For the Sexton, 7.08

The following bills were ordered paid:

For printing ballots and reports, .. \$10.50
For preparing bonds for West Philadelphia Church, 40.00
For Publicity Committee's salary and expenses, 21.55

CONFERENCE PROCEEDINGS, 1913.

S. D. Faust, D. D., was elected delegate to the Anti-Saloon League convention to be held at Columbus, Ohio, during November, 1913.

On motion the pastors were ordered to forward to the Statistical Secretaries, at least two weeks before next Annual Conference, that part of their annual report pertaining to Organizations, Membership and Literature.

The following resolution relative to Minimum Salary was passed:

Resolved, That the minimum salary of seven hundred dollars (\$700.00) and home be continued in force for the following conference year, under the same conditions as those adopted in last year's session of Conference. (See Conference Minutes 1911, page 24.)

On motion the Conference requested the Board of Managers of the Mt. Gretna Campmeeting Association to provide for a Bible Conference to be held at Mt. Gretna, and that the Conference pledge its support to such a project.

After a statement by Dr. Lowery it was ordered that each pastor assigned to a charge during the coming year contribute five dollars to the support of J. F. Smith, who is seriously ill and unable to serve a charge during the coming year. Many of the laymen and friends on the Conference floor at the time also contributed to this cause, and the Conference Treasurer was ordered to pay the amount received to J. F. Smith.

Mrs. I. B. Haak, of Myerstown, Pennsylvania, treasurer of the Conference Branch brought the greetings of the Woman's Missionary Association to the Conference.

The response to these greetings was made by C. A. Snavely.

Dr. Enck was appointed to respond to such greetings at the next session of the Annual Conference, and the pastor at Annville to bear the greetings of this Annual Conference to the Woman's Branch Missionary convention which convenes at Annville, May, 1914.

The Conference Church Extension and Missionary Society recommended the following appropriations to the Conference Missions, which were on motion approved:

APPROPRIATIONS TO CONFERENCE MISSIONS.

Allentown, Sixth Street,	\$700 00
Sunbury,	400 00
Williamstown,	75 00
Philadelphia, First,	250 00
Coatesville,	475 00
Lebanon, Bethany,	200 00
Millersburg,	175 00
Hebron,	500 00
Schaefferstown,	125 00
Lancaster, Otterbein,	175 00
Tremont,	250 00
West Philadelphia,	1,200 00

The Committee on Resolutions reported as follows which was adopted:

REPORT OF THE COMMITTEE ON RESOLUTIONS.

Whereas, we, the members of the One Hundred and Fourteenth session of the East Pennsylvania Annual Conference, have been the recipients of great blessings, in that our lives have been spared during another year:

And, whereas, the Lord has given us many souls for our labors of love;

And, whereas, many charges have been blessed in the erection of new and remodeling churches;

Therefore, be it RESOLVED:

1. That we thank our Heavenly Father for the success and prosperity with which he has blessed us during the past year.

2. That we will do all in our power to stem the tide of divorce which is destroying the sanctity of the home life.

CONFERENCE PROCEEDINGS, 1913.

3. That we pledge ourselves as pastors and laymen to do all we can to restore the family altar in every home.

4. That we recognize, as a solution to the problem of the home, "The Family Altar League," and by a rising vote endorse their efforts.

5. That we disapprove of the secularization of the Lord's Day, and endeavor by all honorable means to prevent the day from being made a day of sports, pleasures and work.

6. That we will preach and give instruction to old and young, and warn them against the use of drugs, narcotics, and all kinds of intoxicating drinks.

7. That we disapprove of the action of the English Government in forcing upon China the opium, which she had hoped to abolish through the efforts of a special envoy.

8. That by a rising vote of thanks we express our approval of the leadership of our esteemed Bishop, W. M. Weekley, D.D., and also of our Conference Superintendent, D. D. Lowery, D.D., and that we pledge to them our full measure of devotion and service.

9. That we appreciate the kindness and goodness of the pastor of Allentown, Linden street, C. A. Snavely, with his excellent corps of efficient workers, for the manner in which they received and entertained us.

10. That we feel indebted to the local papers for the full reports printed of the proceedings of our Conference.

11. That we as ministers pledge ourselves to write to the pastors of the towns or cities into which our people have moved and inform them of their presence there.

12. That we shall not forget to hold up to a throne of grace the eighteen young men who have entered our ranks as ministers this year.

13. That we miss from our counsel H. E. Miller and J. Francis Smith, who are absent because of affliction, and realizing the value of prayer, we ask that the Bishop call the Conference to prayer in their behalf.

14. That we pledge our all to the success of the work at home and abroad, and lovingly do the work which shall be assigned us for the new year.

The Committee on Devotions made the usual report, supplying the pulpits of the city and vicinity for which request was made.

The fourth day, morning session of the Conference adjourned with the benediction by G. D. Batdorf.

—o—

FOURTH DAY—AFTERNOON SESSION.

The fourth day, afternoon session of the Conference convened at 1.30 o'clock. Devotional exercises were conducted by C. A. Mutch.

Bishop Weekley delivered a stirring address on "Pastoral Visiting."

The following resolution relative to the press of Allentown was unanimously adopted:

RESOLVED, That we extend our appreciation of the press work and reportorial services of the Allentown newspapers rendered by Mr. W. L. Hartman and Mr. E. J. Crader, of "The City Item"; Mr. Royal W. Weiler and Mr. C. L. Cole, of "The Allentown Democrat"; Mr. Eugene T. Quinn, of "The Chronicle and News"; Mr. Reuben C. Weaver, of "The Leader", and Mr. George W. Bixler, of "The Morning Call."

The warm-hearted editorial in "The City Item" is expressive, we are assured, of the fine spirit of the citizenship of Allentown, and is duly appreciated.

Mr. Herbert A. Smith, a son of Rev. J. F. Smith, expressed the thanks of his parents to the Conference for the provision that was made for them.

After singing a hymn and a tender prayer offered by Dr. Albright in behalf of H. E. Miller and J. F. Smith in their afflictions, and for the families of our deceased brethren, eulogies on members of this Conference deceased during the year were read in the Memorial Service as follows: on the life and work of M. J. Mumma by I. M. Hershey; on the life and work of U. S. G. Renn by S. E. Rupp.

CONFERENCE PROCEEDINGS, 1913.

M. J. MUMMA

"It is appointed unto men once to die, and then cometh the judgment." This Scripture proved true with the Reverend M. J. Mumma, who went out from us on November 9, 1912, at the age of 72 years and 8 months. He has gone to his eternal rest to receive his reward for deeds done in the body. He served his allotted time on the earth, many years of which were in life's most sacred calling. God called him into His ministry early after his conversion, which occurred in mature manhood. Having been obedient to the heavenly vision, he was granted Quarterly Conference license at Highspire, January 26, 1869, and Annual Conference license on March 4, 1870. On March 10, 1872, was ordained by Bishop Johnathan Weaver to the sacred order of the Ministry at the Annual Conference held at Harrisburg. Brother Mumma was a faithful servant. He served well the charges to which he was assigned, preaching faithfully, conducting successful revivals, diligent in pastoral work, and yet an enthusiastic and loyal supporter of the general Church work.

He served as follows: Annville, 1870-71; New Holland, 1871-75; Lebanon Valley College Agent, 1875-76; Reading Otterbein, 1876-77; Presiding Elder, 1877-81; Mountville, 1881-84; Lancaster Covenant, 1884-86; New Holland, 1886-87; Penbrook, 1887-89; Presiding Elder, 1889-91; Hummelstown, 1891-93; Lebanon Valley College Agent, 1893-94; Annville, 1894-97; Jacksonville Circuit, 1897-1900; Ephrata, 1900-03; Schuylkill Haven, 1903-07. The last five years of his life he lived retired, preaching occasionally.

As a preacher, he was strong, forceful, logical and thoughtful. He was not so much concerned about the polish and setting of his sermon as of the truth clearly and convincingly stated. Thoughtful hearers appreciated him most. So direct was his presentation that he was misunderstood by many. It required serious reflection to understand all he really meant. For this reason some thought him blunt and harsh. Not so, it was in love. He stood for the sure defense of the Gospel and the trustworthy faith of the Fathers. He was a tried and true servant of God.

We mourn our loss to-day, yet not without hope. His labors which have brought their gracious fruition, of which we have seen and heard much, are our inspiration for most diligent future ministeries, so that when our labors are over, we may have a similar call, "Well done thou good and faithful servant, thou hast been faithful over a few things, I will make thee ruler over many things, enter thou into the joy of the Lord."

One by one our dear brethren in the Lord and ministry enter into their rest. Their mantles fall upon us. May it please our Heavenly Father to empower us with a double portion of their righteous spirit, that we who serve may be faithful to the tasks enjoined upon us, until that day when we, too, shall be gathered home, to be forever with the Lord.

U. S. G. RENN.

Rev. U. S. G. Renn was born March 18, 1864, five miles south of Sunbury in Northumberland County, Pennsylvania, and died in his late home at Harrisburg, Pennsylvania, December 24, 1912, after a brief illness.

He was converted when fourteen years of age and early in life felt the call of the gospel ministry. After teaching public school one year, he entered Lebanon Valley College, but before completing his course he took charge of Manor Circuit.

He became a member of Annual Conference in 1888 and served the following appointments commendably: Manor Circuit, Manheim, Elverson, Mont Clare, Oberlin, Ephrata; following his pastorate at Ephrata he entered Bonebrake Seminary in 1900 and after graduation was sent to Reading Memorial and from there to Middletown, from which place he was transferred to Harrisburg State Street in the fall of 1912, where he died shortly after entering upon his pastoral work.

In 1881 he was married to Lillie F. Light, and to this union there were born two sons and two daughters; Earl E., Grant O., L. Hope and Faye M., who with his widow survive him.

As a minister he was strong in the pulpit, as a pastor untiring in his work, and especially successful in his evangelistic efforts, leading many to Christ and the Church.

He was cut down early in life and in his death our Conference has lost one of her most worthy sons, who was born and reared among us and labored entirely within our borders; the family a devoted husband and father; and the state a loyal citizen.

Funeral services were in charge of I. E. Runk, assisted by several of his fellow ministers. Services were conducted in State Street United Brethren Church, to which he gave his last days of ministerial service, and the following day in the United Brethren Church at Annville. Interment was made in the Annville Cemetery.

The Bishop appointed the following Standing Committees for the current year:

Home Missions—Conference Committee on Home Missions.

Foreign Missions—Conference Committee on Foreign Missions.

Christian Stewardship—H. E. Ulrich.

CONFERENCE PROCEEDINGS, 1913.

Church Erection—Joseph Daugherty.

Education—J. T. Spangler, D. D.

Publishing Interests—A. K. Wier.

Sabbath Schools—H. J. Behney.

Young People's Society of Christian Endeavor—C. Y. Ulrich.

The Home—I. H. Albright, Ph. D.

Temperance—O. T. Ehrhart.

Bible Cause—J. B. Funk.

Resolutions—Clarence Mease.

Auditing Committee—B. F. Daugherty, D. D., and A. S. Beckley.

Publicity Committee—Clint. S. Miller.

The East Pennsylvania Conference—What, Why, How? S. C. Enck, D. D.

Applicants and Credentials—J. T. Spangler, D. D., H. E. Miller, A. S. Lehman.

First Year's Course of Study—C. A. Mutch, M. H. Jones, J. A. Keiper.

Second Year's Course of Study—E. O. Burtner, H. F. Rhoad, Joseph Daugherty.

Third Year's Course of Study—I. H. Albright, Ph. D., A. G. Nye, A. K. Wier.

Fourth Year's Course of Study—S. C. Enck, D. D., J. M. Walters, S. S. Daugherty.

It was ordered that the final adjournment of the Conference occur on Monday, October 6, 1913, at ten o'clock A. M.

J. A. Lyter and C. E. Boughter were re-elected Recording Secretary and Assistant Recording Secretary respectively and E. A. G. Bossler and R. R. Butterwick were re-elected Statistical Secretaries for the coming year and for the next session of the Annual Conference.

The compensations of the secretaries was fixed as follows: J. A. Lyter, \$50.00; C. E. Boughter, \$30.00; E. A. G. Bossler, \$20.00; R. R. Butterwick, \$15.00, and the expenses of each.

The Recording Secretary was on motion empowered to edit and arrange the Minutes.

The Minutes of the fourth day sessions were read and approved.

The fourth day, afternoon session of the Conference adjourned with the benediction by Bishop Weekly.

The report of the Stationing Committee was read in connection with the Sabbath morning service, by Dr. Lowery, the Conference Superintendent. It is as follows:

STATIONING COMMITTEE'S REPORT.

Conference District—D. D. Lowery, D. D., Superintendent.

- | | |
|---|--------------------------------|
| 1. Allentown, Linden Street, C. A. Snavely. | 7. Birdsboro—C. Y. Ulrich. |
| 2. Allentown, Sixth Street, C. G. White. | 8. Catawissa—B. F. Goodman. |
| 3. Annville. | 9. Centerville—O. R. Brooks. |
| 4. Avon—D. S. Longenecker. | 10. Chamber Hill—C. L. Earley. |
| 5. Belle Grove—C. R. Longenecker. | 11. Coatesville—Z. A. Weidler. |
| 6. Berne—I. W. Funk. | 12. Columbia—Joseph Daugherty. |
| | 13. Cressona—C. Mease. |
| | 14. Denver—W. W. Fridinger. |

CONFERENCE PROCEEDINGS, 1913.

- | | |
|---|---|
| 15. Elizabethtown — I. N. Seldom-
ridge. | 46. Linglestown, C. A. Lynch. |
| 16. Ephrata—J. M. Walters. | 47. Lititz, J. E. Keene. |
| 17. Florin—J. B. Funk. | 48. Lykens, H. S. Kiefer. |
| 18. Grantville—R. S. Arndt. | 49. Lykens Circuit, M. H. Miller. |
| 19. Halifax—C. A. Funk. | 50. Manheim, H. J. Behney. |
| 20. Harrisburg—First, J. T. Spang-
ler, D. D. | 51. Manor, Martin Groff. |
| 21. Otterbein, S. E. Rupp. | 52. Middletown, I. H. Albright,
Ph. D. |
| 22. Derry Street, J. A. Lyter, D. D. | 53. Millersburg, A. L. Haeseler. |
| 23. State Street, E. A. G. Bossler. | 54. Mont Clare, John O. Jones. |
| 24. Sixth Street, P. H. Balsbaugh. | 55. Mt. Carmel, C. S. Miller. |
| 25. Hershey—N. L. Linebaugh. | 56. Mt. Joy, H. S. Gabel, D. D. |
| 26. Highspire—H. F. Rhoad. | 57. Mountville, R. R. Butterwick,
D. D. |
| 27. Hillsdale—William Beach. | 58. Myerstown, O. L. Mease. |
| 28. Hopeland—W. E. Shoop. | 59. Neffsville, S. G. Kauffman. |
| 29. Hummelstown—A. S. Lehman. | 60. New Holland, J. R. MacDonald. |
| 30. Intercourse—H. E. Ulrich. | 61. Northampton, G. W. Hess. |
| 31. Iona, C. W. Miller. | 62. Oberlin, C. E. Boughter. |
| 32. Jacksonville, J. C. Pease. | 63. Palmyra First, E. O. Burtner. |
| 33. Jonestown— | 64. Palmyra Second, A. Lehman. |
| Jonestown and Fredericks-
burg, D. E. Young. | 65. Penbrook, H. M. Miller. |
| Lickdale and Greenpoint, G.
L. Blouch. | 66. Pequea, S. G. Haas. |
| 34. Lancaster Covenant, G. D. Bat-
dorf, Ph. D. | 67. Philadelphia First, J. A. Keiper. |
| 35. Lancaster North Queen Street,
S. L. Rhoads. | 68. Philadelphia West, Second, S.
C. Enck, D. D. |
| 36. Lancaster Laurel Street, J. R.
Bowermaster. | 69. Pine Grove, L. R. Kramer. |
| 37. Lebanon Salem, H. E. Miller. | 70. Pottstown, H. F. Boeshore. |
| 38. Lebanon Trinity, B. F. Daugh-
erty, D. D. | 71. Reading Zion, D. D. Brandt. |
| 39. Lebanon Memorial, A. G. Nye. | 72. Reading Trinity, S. S. Daugh-
erty. |
| 40. Lebanon West, C. H. Holzinger. | 73. Reading Salem, D. D. Bud-
dinger. |
| 41. Lebanon Bethany, S. B. Wen-
gert. | 74. Refton, B. M. Breneman. |
| 42. Lebanon Hebron, O. T. Ehrhart. | 75. Royalton, H. A. Smith. |
| 43. Lebanon Pleasant Hill, P. B.
Gibble. | 76. Schuylkill Haven, C. A. Mutch. |
| 44. Lebanon Circuit, H. E. Schaefer. | 77. Schaefferstown, H. H. Fertig. |
| 45. Lehigh, Under care of Allen-
town Linden Street Quar-
terly Conference. | 78. Shamokin, A. S. Beckley. |
| | 79. Shamokin Circuit, J. F. Brown. |
| | 80. Steelton, A. K. Wier. |
| | 81. St. Johns, M. H. Jones. |
| | 82. Sunbury, M. T. Wert. |
| | 83. Tower City, N. I. Fake. |
| | 84. Tremont, P. M. Holdeman. |
| | 85. Union, O. G. Romig. |
| | 86. Valley View, H. M. Mentzer. |
| | 87. Williamstown, E. E. Bender. |

S. D. Faust, D. D., Professor in Bonebrake Theological Seminary; C. I. B. Brane, D. D., Associate Editor Religious Telescope; A. E. Shroyer, A. M. Professor of Greek and Ethics in Lebanon Valley Colleg; D. E. Long, Field Secretary of Lebanon Valley College; H. U. Roop, Ph. D., President Eastern College; George M. Richter and J. F. Musselman, Missionaries in Africa; C. W. Shoop, Missionary in China; I. M. Hershey, Secretary of Hershey Y. M. C. A.

SABBATH AND EVENING SERVICES.

Wednesday evening, 7.30 o'clock. "Conference Church Extension." Song service by the church choir. Address—"The Extension of our Work in the East Pennsylvania Conference," by E. O. Burtner, Palmyra, Penna. Address—"Philadelphia, a Retrospect and a Prospect," by S. C. Enck, D. D., Philadelphia, Penna.

Thursday evening, 7.30 o'clock. "Home Missions and Church Erection and Sabbath Schools." Song service by the church choir. Address—"Home Missions and Church Erection," by L. O. Miller, General Church Treasurer, Dayton, Ohio. Address—"Sabbath Schools," by C. W. Brewbaker, Ph. D., General Secretary of Sabbath Schools, Dayton, Ohio.

Friday evening, 7.30 o'clock. "Foreign Missions." Song service by the church choir. Address—"Africa," by J. F. Musselman of Freetown, West Africa. Address—"God's Program for the Church," by S. S. Hough, D. D., General Secretary of Foreign Missions, Dayton, Ohio.

Saturday evening, 7.30 o'clock. "The Church Revived." Song service by the junior church choir. Address—"The Church Revived," by R. R. Butterwick, D. D., of Mountville, Penna. Address—"The Evangelistic Activities of a Revived Church," by A. K. Wier, of Reading, Penna.

Sabbath morning, 9.00 o'clock. Sabbath School, George F. Breinig, Superintendent. Addresses by P. H. Balsbaugh and A. S. Lehman.

Sabbath morning, 10.00 o'clock. Sermon by Bishop Weekley. Text, Colossians 1:18. It was a marvelous eulogy of "The Pre-eminent Christ." In connection with this service R. E. Morgan and J. B. Glick were ordained to the office of Elder in the Church of the United Brethren in Christ.

Sabbath evening, 7.30 o'clock. Sermon by S. S. Hough, D. D.

The following is the Charter of the East Pennsylvania Conference of the Church of the United Brethren in Christ:

AN ACT.

To Incorporate the East Pennsylvania Annual Conference of the Church of the United Brethren in Christ.

Section 1. Be it enacted by the Senate and House of Representatives of the Commonwealth of Pennsylvania in General Assembly met, and it is hereby enacted by the authority of the same, That George A. Mark, Junior, Jacob Brewer, G. W. Miles Rigor, and others, ministerial members of the East Pennsylvania Annual Conference of the Church of the United Brethren in Christ, as contained in the minutes of their session for the year one thousand nine hundred and sixty-six, and all the ministers and preachers who are, or may hereafter be, members of said annual conference, during their membership thereof shall be and they are hereby made and constituted a body politic and corporate, in law and in fact, to have perpetual succession, by and under the name, style and title aforesaid, shall be capable, in law, to sue and be sued, plead and be impleaded, in any court, or before any judge, or justice of the peace, in all and all manner of suits, complaints, pleas and demands, of whatsoever name, or nature, and all and every matter and thing to do, in as full and effectual a manner as any other person, or persons, body politic, or corporate, within this Commonwealth may, or can do.

Section 2. That the said corporation, and their successors, shall be and are hereby authorized and empowered to make, ordain, and establish such by-laws and ordinances as shall be necessary and proper, for the regulation of the temporal and financial concerns of the said conference, and for the promotion of religion: **Provided,** That nothing shall be done, in pursuance of the powers and the privileges, herein granted, repugnant to this act, or to the constitution of the United States, or to the constitution and laws of this Commonwealth.

Section 3. That the business of the said corporation shall be managed and conducted by the said corporation, at the times and during the annual sessions of the said annual conference, or an adjourned, or extra session thereof.

Section 4. That the said corporation, and their successors, shall have full power and authority to make, have and to use, one common seal, with such devices and inscription as they shall think proper, and the same to break, renew and alter, at their pleasure.

Section 5. That the said corporation, or their successors, by the name, style and title aforesaid, shall be able and capable, in law and equity, to take and to hold, to themselves and their successors, for the uses and objects set forth, as aforesaid, lands, tenements, goods and chattels, of whatsoever kind, nature and quality, real, personal or mixed, which now is, or shall hereafter become, the property of the said annual conference, by gift, grant, bargain, sale, conveyance, devise, bequest, or otherwise, from any person, or persons whatsoever, capable of making the same, and the same to grant, bargain, sell, or otherwise dispose of, for the use of the said annual conference: **Provided,** That the yearly value, or income, of said estate shall not, at any time, exceed five thousand dollars, and shall not be appropriated to any other than the financial and religious promotion of the said annual conference, as before named.

Section 6. That the said corporation, in the transaction of their religious or secular affairs, shall adopt and be governed by the rules and regulations, as set forth in the discipline of the Church of the United Brethren in Christ, as it now exists, or as it may hereafter be altered, or amended, by the general conference of said church.

Section 7. That each and every church now built, or that shall hereafter be built, and dedicated to, the Church of the United Brethren in Christ, and also all colleges, academies and schools, that have been, or shall hereafter be, built by, or donated to, the same, within the limits of the annual conference aforesaid, shall be subject to the entire and exclusive jurisdiction and control of said annual conference.

Section 8. That no misnomer of the said corporation shall defeat, or annul, any gift, grant, devise, or bequest to, or from, the said corporation: **Provided,** That the intent of the party, or parties, shall sufficiently appear upon the face of the grant, will, or other writing, whereby an estate, or interest, is intended to pass to, or from, the said corporation.

JAMES R. KELLEY,
Speaker of the House of Representatives.
DAVID FLEMING,
Speaker of the Senate.

APPROVED—The twelfth day of April, Anno Domini one thousand eight hundred and sixty-six.

A. G. CURTIN.

CONFERENCE PROCEEDINGS, 1913.

ITINERANTS

Entered Conference.	Name.	Relation.	Address.
1876	Albright, I. H., Ph. D.,	E.	Middletown, Pa.
1881	Arndt, R. S.,	E.	Annville, Pa.
1903	Balsbaugh, P. H.,	E.	634 Camp St., Harrisburg, Pa.
1897	Batdorf, G. D., Ph. D.,	E.	127 Charlotte St., Lancaster, Pa.
1889	Beach, William,	E.	Middletown, Pa.
1905	Beckley, A. S.,	E.	100 E. Sunbury St., Shamokin, Pa.
1901	Behney, H. J.,	E.	Manheim, Pa.
1910	Bender, E. Ethan,	E.	Williamstown, Pa.
1891	Bierman, G. F., Ph. D., S'y.	E.	739 N. Eighth St., Reading, Pa.
1862	Binkley, John,	S'd E.	Jonestown, Pa.
1888	Bossler, E. A. G.,	E.	125 N. 18th St., Harrisburg, Pa.
1891	Boughter, C. E.,	E.	Oberlin, Pa.
1870	Boughter, J. W.,	S'd E.	Royalton, Pa.
1904	Bowermaster, J. R.,	E.	Lancaster, Pa.
1912	Brandt, D. D.,	E.	206 N. 11th St., Reading, Pa.
1872	Brane, C. I. B., D. D.,	E.	Dayton, Ohio
1910	Breneman, B. M.,	E.	West Willow, Pa.
1911	Brown, J. F.,	3rd yr. L.	R. F. D. No. 2, Shamokin, Pa.
1895	Buddinger, D. D.,	E.	955 N. Tenth St., Reading, Pa.
1895	Burtner, E. O.,	E.	Palmyra, Pa.
1891	Butterwick, R. R., D. D.,	E.	Mountville, Pa.
1880	Butterwick, F. J.,	S'd E.	372 N. 12th St., Lebanon, Pa.
1909	Comrey, E. S.,	4th yr. L.	Bonebrake Seminary, Dayton, Ohio
1887	Daugherty, S. S.,	E.	Pa.
1889	Daugherty, Joseph,	E.	123 N. 4th St., Columbia, Pa.
1889	Daugherty, B. F., D. D.,	E.	837 Willow St., Lebanon, Pa.
1908	Ehrhart, O. T.,	1st yr. L.	"The Heights," Lebanon, Pa.
1888	Enck, S. C., D. D.,	E.	5845 Catharine St., Philadelphia, Pa.
1882	Enders, G. W.,	S'y E.	Enders, Pa.
1885	Faust, S. D., D. D.,	E.	1614 W. First St., Dayton, Ohio
1893	Fridinger, W. W.,	E.	Denver, Pa.
1891	Funk, J. B.,	E.	Florin, Pa.
1883	Gabel, H. S., D. D.,	E.	Mt. Joy, Pa.
1879	Gambler, U.,	S'd E.	826 Church St., Lebanon, Pa.
1871	Garland, Thomas,	E.	Penbrook, Pa.
1911	Gibble, Phares B.,	1st yr. L.	Annville, Pa.
1884	Goodman, B. F.,	E.	R. D. No. 3, Catawissa, Pa.
1911	Groff, Martin,	1st yr. L.	Safe Harbor, Pa.
1875	Groff, I. M.,	E.	56 N. Duke St., Lancaster, Pa.
1911	Haas, S. G.,	E.	Pequea, Pa.
1878	Haines, P. L.,	E.	Palmyra, Pa.
1904	Haesler, A. L.,	E.	Millersburg, Pa.
1898	Hershey, I. Moyer,	E.	Hershey, Pa.
1910	Hess, George W.,	4th yr. L.	Tremont, Pa.
1903	Holdeman, P. M.,	2nd yr. L.	Annville, Pa.
1910	Holzinger, C. H.,	2nd yr. L.	Gordonville, Pa.
1891	Jones, M. H.,	E.	825 N. Shippen St., Lancaster, Pa.
1891	Kaufman, S. G.,	E.	Lititz, Pa.
1903	Keene, J. E.,	E.	151 E. Allegheny Ave., Phila., Pa.
1888	Keiper, J. A.,	E.	Lykens, Pa.
1903	Kiefer, H. S.,	E.	R. D. No. 1, Bath, Pa.
1886	Koons, I. B.,	E.	Pine Grove, Pa.
1889	Kramer, L. R.,	E.	Chapman's Quarries, Pa.
1880	Lamey, Wm.,	S'y E.	Palmyra, Pa.
1879	Lehman, A.,	E.	Hummelstown, Pa.
1901	Lehman, A. S.,	E.	Hershey, Pa.
1906	Linebaugh, N. L.,	E.	Annville, Pa.
1897	Long, D. E.,	E.	Avon, Pa.
1878	Longenecker, D. S.,	E.	1535 Derry St., Harrisburg, Pa.
1879	Lowery, D. D., D. D.,	E.	80 N. 17th St., Harrisburg, Pa.
1910	Lynch, Clyde A.,	1st yr. L.	1508 Derry St., Harrisburg, Pa.
1888	Lyter, J. A., D. D.,	E.	Myerstown, Pa.
1905	Mease, Oliver L.,	E.	Cressona, Pa.
1908	Mease, Clarence,	E.	Pa.
1884	Miller, C. S.,	E.	14 S. Vine St., Mt. Carmel, Pa.
1889	Miller, H. M.,	E.	Penbrook, Pa.

CONFERENCE PROCEEDINGS, 1913.

ITINERANTS—CONTINUED

Entered Conference.	Name.	Relation.	Address.
1892	Miller, M. H.,	E.	Elizabethville, Pa.
1894	Miller, H. E.,	E.	349 N. Ninth St., Lebanon, Pa.
1906	Miller, C. W.,	E.	R. D. No. 1, Lebanon, Pa.
1907	Morgan, R. E.,	E.	Valley View, Pa.
1909	Musselman, J. F.,	E.	Freetown, W. Africa
1887	Mutch, C. A.,	E.	Schuylkill Haven, Pa.
1894	Nye, A. G.,	E.	1040 Lehman St., Lebanon, Pa.
1908	Ohmacht, J. L.,	2nd yr. L.	735 S. 23rd St., Harrisburg, Pa.
1904	Pease, J. C.,	E.	Halifax, Pa.
1899	Rhoad, H. F.,	E.	Highspire, Pa.
1895	Rhoads, S. L.,	E.	233 E. Clay St., Lancaster, Pa.
1906	Richter, Geo. M.,	E.	Freetown, W. Africa
1894	Romig, O. G.,	E.	Hershey, Pa.
1857	Runk, J.,	Sup'd E.	Berrysburg, Pa.
1896	Runk, I. E., D. D.,	E.	Scottdale, Pa.
1900	Rupp, S. E.,	E.	343 Reily St., Harrisburg, Pa.
1867	Shoop, J.,	Su'd E.	Carsonville, Pa.
1906	Shoop, C. W.,	E.	Canton, China
1911	Shoop, W. E.,	2nd yr. L.	Hopeland, Pa.
1899	Shroyer, A. E.,	E.	Annville, Pa.
1888	Smith, J. Francis,	E.	Royalton, Pa.
1903	Snavely, C. A.,	E.	817 Linden St., Allentown, Pa.
1891	Spangler, J. T., D. D.,	E.	258 Herr St., Harrisburg, Pa.
1381	Spayd, H. B.,	E.	R. D. No. 5, Modesto, Cal.
1874	Steiner, J. G.,	Supd E.	Knoxdale, Pa.
1900	Seldomridge, I. N.,	E.	Elizabethtown, Pa.
1899	Trautman, H. M.,	E.	Gibraltar, Berks Co., Pa.
1908	Ulrich, A. N.,	2nd yr. L.	Middletown, Pa.
1891	Walters, J. M.,	E.	64 Church St., Ephrata, Pa.
1881	Weidler, Z. A.,	E.	75 South Sixth Ave., Coatesville, Pa.
1910	White, C. G.,	2nd yr. L.	817 N. Sixth St., Allentown, Pa.
1899	Wier, A. K.,	E.	311 Walnut St., Steelton, Pa.
1893	Wengert, S. B.,	E.	38 Mifflin St., Lebanon, Pa.
1906	Wert, Mark H.,	E.	356 Vine St., Sunbury, Pa.

LOCAL

1913	Arndt, R. H.,	1st yr. L.	Annville, Pa.
1885	Blecker, A. M.,	E.	Myerstown, Pa.
1913	Blouch, G. L.,	1st yr. L.	Annville, Pa.
1913	Boeshore, H. F.,	1st yr. L.	Lebanon, Pa.
1911	Bomberger, J. W.,	1st yr. L.	Annville, Pa.
1912	Brooks, O. R.,	1st yr. L.	614 E. Madison St., Lancaster, Pa.
1913	Earley, C. L.,	2nd yr. L.	1430 N. Third St., Harrisburg, Pa.
1913	Fertig, H. H.,	1st yr. L.	Schaefferstown, Pa.
1912	Funk, C. A.,	E.	Halifax, Pa.
1913	Funk, Ira W.,	1st yr. L.	Adamsdale, Pa.
1909	Glick, J. B.,	E.	Roanoke, Ind.
1913	Hallman, A. W.,	1st yr. L.	Annville, Pa.
1910	Holtzman, M. G.,	1st yr. L.	805-6 Witherspoon Bldg., Phila., Pa.
1913	Jones, John O.,	1st yr. L.	Annville, Pa.
1885	Kurtz, J. H.,	E.	Bellwood, Pa.
1889	Lehman, W. H.,	E.	Killinger, Pa.
1911	Leibold, T. J.,	1st yr. L.	Bonebrake Seminary, Dayton, Ohio
1913	Longenecker, C. R.,	1st yr. L.	Annville, Pa.
1910	Lowery, Ira D.,	2nd yr. L.	Bonebrake Seminary, Dayton, Ohio
1912	McDonald, J. R.,	1st yr. L.	New Holland, Pa.
1913	Martin, Lloyd,	1st yr. L.	Johnson City, Tenn.
1913	Mentzer, H. M.,	1st yr. L.	Valley View, Pa.
1913	Oakes, J. W.,	1st yr. L.	Annville, Pa.
1912	Rettew, C. E.,	1st yr. L.	Bonebrake Seminary, Dayton, Ohio
1893	Roop, H. U., Ph. D.,	E.	Manasses, Va.
1913	Schaffer, H. E.,	1st yr. L.	Annville, Pa.
1913	Schwalm, C. W.,	1st yr. L.	Valley View, Pa.
1890	Snyder, W. H.,	E.	Lykens, Pa.
1913	Smith, H. A.,	1st yr. L.	Royalton, Pa.
1913	Ulrich, H. E.,	1st yr. L.	Intercourse, Pa.
1913	Ulrich, C. Y.,	1st yr. L.	Birdsboro, Pa.
1881	Weidman, B. B.,	E.	Sinking Springs, Pa.
1912	Young, D. E.,	1st yr. L.	Annville, Pa.

LAY DELEGATES

- | | |
|---|---|
| 1. Allentown, Linden St., G. F. Breinig | 44. Lebanon Circuit,H. D. Meyer |
| 2. Allentown, Sixth St., R. A. Parkes | 45. Linglestown,U. F. Feeser |
| 3. Annville,H. L. Kinports | 46. Lititz,N. D. Sturgis |
| 4. Avon,J. H. Bomberger | 47. Lykens,W. M. Romberger |
| 5. Bellegrove,S. W. Gelbach | 48. Lykens Circuit,H. G. Foster |
| 6. Berne,Jacob S. Yoder | 49. Manheim,C. L. Witmyer |
| 7. Birdsboro,W. H. Wilson | 50. Manor,H. G. Frey |
| 8. Catawissa,Benjamin Griffeth | 51. Middletown,H. B. Bossler |
| 9. Centerville,John B. Kauffman | 52. Millersburg,Ed. H. Chubb |
| 10. Chamber Hill,M. F. O'Neal | 53. Mont Clare,J. T. Readman |
| 11. Coatesville,P. H. Hechler | 54. Mt. Carmel,Thomas Matter |
| 12. Columbia,M. D. Kendig | 55. Mt. Joy,S. N. Eby |
| 13. Cressona,W. A. Grieff | 56. Mountville,R. M. Fridy |
| 14. Denver,H. S. Fasnacht | 57. Myerstown,I. B. Haak |
| 15. Elizabethtown,J. H. Stern | 58. Neffsville,H. S. Shissler |
| 16. Ephrata,I. G. Mentzer | 59. New Holland,E. G. Ranck |
| 17. Florin,G. A. Geyer | 60. Northampton, ...Wm. T. Easterday |
| 18. Grantville,George Behney | 61. Oberlin,J. W. Garverich |
| 19. Halifax,C. R. Shope | 62. Palmyra, First,S. F. Engle |
| 20. Harrisburg, First,R. A. Carl | 63. Palmyra, Second, H. K. Bomberger |
| 21. Harrisburg, Otterbein, ..A. Hoerner | 64. Penbrook,G. M. Aungst |
| 22. Harrisburg, Derry St., E. F. Weaver | 65. Pequea,C. G. Roads |
| 23. Harrisburg, State St., G. E. Runkle | 66. Philadelphia, Mt. Pisgah, S. C. Snoke |
| 24. Harrisburg, Sixth St., R. A. Enders | 67. Philadelphia, West, ...Harry Fridy |
| 25. Hershey,H. M. Whitman | 68. Pine Grove,A. H. Boughter |
| 26. Highspire,H. J. Roop | 69. Pottstown,Lewis Murray |
| 27. Hillsdale,T. S. Manning | 70. Reading, Zion,F. N. Heilig |
| 28. Hopeland,W. R. Ruth | 71. Reading, Trinity,E. C. Smith |
| 29. Hummelstown, ..L. W. Zimmerman | 72. Reading, Salem,Kate Coldren |
| 30. Intercourse,J. M. Beam | 73. Refton,M. B. Groff |
| 31. Iona,J. G. Beckley | 74. Royalton,A. S. Bender |
| 32. Jacksonville,H. R. Landis | 75. Schuylkill Haven, ..John A. Mower |
| 33. Jonestown,E. C. Tobias | 76. Schaefferstown, ..Harry H. Hewitt |
| 34. Lancaster, Covenant, C. L. Graybill | 77. Shamokin, First,L. M. Erdman |
| 35. Lancaster, N. Queen, .J. B. Withers | 78. Shamokin Circuit,G. S. Clark |
| 36. Lancaster, Laurel St., Harry Hoover | 79. Sinking Spring,O. L. Weidman |
| 37. Lebanon, Salem, .R. V. Schanbacher | 80. Steelton,J. F. Mentzer |
| 38. Lebanon, TrinityA. S. Light | 81. St. John's,J. B. Weaver |
| 39. Lebanon, Memorial, ..M. A. Wagner | 82. Sunbury,C. D. Rabuck |
| 40. Lebanon, Bethany,U. W. Light | 83. Tower City,J. L. Reed |
| 41. Lebanon, Hebron,Allen G. Ross | 84. Union,Edward Stover |
| 42. Lebanon, Pleasant Hill, F. G. Moyer | 85. Valley View,J. I. Miller |
| 43. Lebanon, West,Wm. W. Donley | 86. Williamstown,H. F. Malick |

CONFERENCE PROCEEDINGS, 1913.

FIELD OF LABOR.	NAME OF PREACHER.	Number churches organized.	MEMBERS.							
			At beginning of year.	Received by confession of faith.	Received by letter.	Total in church during year.	Lost by letter.	Lost by removal.	Total loss.	
CONFERENCE DISTRICT—	D. D. Lowery, D. D. Supt.									
1 Allentown, Linden St.,	C. A. Snavelly,	1	222	13	2	237	2	11	13	
2 Allentown, Sixth St.,	E. E. Bender,	1	70	2	1	73	1	5	6	
3 Annville,	H. B. Spayd,	1	345	42	22	409	6	7	13	
4 Avon,	D. S. Longenecker,	1	214	20	14	248	3	3	6	
5 Belle Grove,	P. L. Haines,	4	217	21	2	240	5	6	11	
6 Berne,	W. E. Shoop,	3	173	173	4	3	7	
7 Birdsboro,	H. M. Trautman,	2	111	111	1	25	26	
8 Catawissa,	B. F. Goodman,	4	320	14	2	336	2	25	27	
9 Centerville,	S. G. Kauffman,	4	194	2	3	199	19	19	
10 Chamber Hill,	Harry E. Urien,	2	158	158	2	72	74	
11 Coatesville,	Z. A. Weidler,	1	79	5	4	88	2	6	8	
12 Columbia,	Joseph Daugherty,	1	617	44	22	683	32	41	73	
13 Cressona,	Clarence Mease,	2	118	19	6	143	2	10	12	
14 Denver,	W. W. Fridinger,	2	150	23	173	4	8	12	
15 Elizabethtown,	S. S. Daugherty,	1	296	6	6	308	4	14	18	
16 Ephrata,	J. M. Waiters,	1	250	39	7	296	8	14	22	
17 Florin,	J. B. Funk,	2	142	142	10	12	22	
18 Grantville,	R. S. Arndt,	4	228	7	235	10	3	13	
19 Halifax,	Clifford S. Funk,	2	193	26	4	223	10	40	50	
20 Harrisburg, First,	I. E. Runk,	1	410	15	5	430	15	25	40	
21 Harrisburg, Otterbein,	S. E. Rupp,	1	428	31	5	464	8	20	28	
22 Harrisburg, Derry St.,	J. A. Lyter,	1	653	13	11	677	28	23	51	
23 Harrisburg, State St.,	Thomas Garland,	1	288	13	5	306	3	2	5	
24 Harrisburg, Sixth St.,	P. H. Balsbaugh,	1	446	60	16	522	2	29	31	
25 Hershey,	A. L. Linebaugh,	1	127	8	15	150	13	6	19	
26 Highspire,	H. F. Rhoad,	1	249	9	3	261	7	11	18	
27 Hillsdale,	Wm. Beach,	4	179	3	2	184	3	7	10	
28 Hopeland,	B. M. Breneman,	2	200	19	219	2	23	25	
29 Hummelstown,	A. S. Lehman,	1	325	13	9	347	2	12	14	
30 Intercourse,	W. H. Peiffer,	2	171	4	1	176	4	1	5	
31 Iona,	C. W. Miller,	2	170	1	171	4	4	8	
32 Jacksonville,	G. W. Hess,	7	287	25	2	314	3	15	18	
33 Jonestown,	D. E. Young and O. R. Brooks,	4	233	20	253	6	6	
34 Lancaster, Covenant,	G. D. Batdorf,	1	700	60	31	791	12	9	21	
35 Lancaster, North Queen St.,	S. L. Rhoads,	1	235	41	11	287	3	18	21	
36 Lancaster, Laurel St.,	J. R. Bowermaster,	1	82	25	107	1	1	
37 Lebanon, Salem,	H. E. Miller,	1	672	39	9	720	8	28	36	
38 Lebanon, Trinity,	B. F. Daugherty,	1	306	12	16	334	4	19	23	
39 Lebanon, Memorial,	A. G. Nye,	1	258	4	2	264	6	7	13	
40 Lebanon, West,	P. B. Gible,	1	161	8	2	171	2	2	
41 Lebanon, Bethany,	S. B. Wengert,	1	106	2	11	119	8	2	10	
42 Lebanon, Hebron,	C. T. Ehrhart,	1	141	22	5	168	1	18	19	
43 Lebanon, Pleasant Hill,	M. H. Wert,	3	191	5	2	198	18	27	45	
44 Lebanon Circuit,	H. E. Shaeffer,	3	181	29	2	212	9	9	
45 Linglestown,	C. A. Lynch,	3	135	4	2	141	4	32	36	
46 Lititz,	J. E. Keene,	1	130	7	3	140	1	5	6	
47 Lykens,	H. S. Kiefer,	1	171	8	3	182	9	5	14	
48 Lykens Circuit,	M. H. Miller,	5	394	14	1	409	36	36	
49 Manheim,	H. J. Behney,	2	484	29	513	3	3	6	
50 Manor,	Martin Groff,	3	296	21	3	320	2	2	
51 Middletown,	I. H. Albright,	1	372	18	17	407	14	53	67	
52 Millersburg,	A. L. Haeseler,	2	271	17	26	314	4	18	22	
53 Mont Clare,	C. H. Holzinger,	1	118	2	3	123	13	13	
54 Mt. Carmel,	Clint S. Miller,	1	126	5	131	14	14	
55 Mt. Joy,	J. T. Spangler,	1	278	1	1	280	8	13	21	
56 Mountville,	R. R. Butterwick,	1	231	22	6	259	9	6	15	
57 Myerstown,	Oliver Mease,	1	294	25	8	327	11	8	19	
58 Neffsville,	Lloyd Martin,	2	76	2	78	8	8	
59 New Holland,	J. R. MacDonald,	2	386	40	8	434	10	10	20	
60 Northampton Circuit,	C. R. Longenecker,	3	80	4	84	1	1	
61 Oberlin,	C. E. Boughter,	1	422	7	1	430	6	22	28	
62 Palmyra, First,	E. O. Burtner,	1	358	23	17	398	5	18	23	
63 Palmyra, Second,	A. Lehman,	1	135	35	9	179	5	3	8	
64 Penbrook,	H. M. Miller,	1	368	19	17	404	19	19	
65 Pequea,	S. G. Haas,	2	217	102	319	14	32	46	
66 Philadelphia, Mt Pisgah,	J. A. Keiper,	1	204	24	3	231	10	24	34	
67 Philadelphia, West,	S. C. Enek,	1	20	64	84	1	1	
68 Pine Grove,	L. R. Kramer,	1	162	4	3	169	2	3	5	
69 Pottstown,	J. M. Luster,	1	85	9	3	97	2	9	11	
70 Reading, Zion,	A. K. Wier,	1	267	6	24	297	1	9	10	

CONFERENCE PROCEEDINGS, 1913.

MEMBERS.			SOCIETIES.					SUNDAY-SCHOOL.												
Members end of year.	Increase.	Decrease.	Young People's Societies.	Members.	Junior Societies.	Members.	Brotherhoods.	Members.	Sunday schools.	Teachers and of-ficers.	Scholars in main school.	Scholars in home department.	Members on cradle roll.	Total enrollment.	No. adult Bible classes.	Scholars in adult Bible classes.	Sunday-school li-braries.	Volumes in li-braries.	Added to church from S. S.	
224	2	...	1	30	1	20	1	23	220	25	30	298	3	100	1	200	11	1
67	...	3	1	38	1	37	1	19	225	73	35	352	2	39	1	2
396	51	...	1	100	1	47	1	43	526	35	36	640	5	225	1	312	35	3
242	28	...	1	90	1	65	1	40	389	...	40	469	10	215	1	100	19	4
229	12	4	56	321	14	35	426	17	5
166	...	7	1	57	1	40	3	48	310	7	25	390	6
85	...	26	1	12	3	17	102	119	7
309	...	11	1	130	4	44	345	60	74	523	5	62	2	175	12	8
180	...	14	1	87	4	61	336	11	24	432	5	94	2	9
84	...	74	2	28	153	38	28	247	1	10	1	20	...	10
80	1	...	1	26	1	32	1	22	125	...	48	195	2	42	1	192	6	11
610	...	7	1	100	1	50	1	57	565	45	76	743	2	178	41	12
131	13	...	1	60	2	13	167	...	19	199	2	93	3	13
161	11	...	1	55	1	60	2	25	156	...	19	200	1	35	2	14
290	...	6	1	55	1	66	1	18	275	65	55	413	4	160	1	110	5	15
274	24	...	1	40	1	65	1	31	340	68	60	499	2	100	34	16
120	...	22	1	57	1	40	1	20	150	31	40	241	3	53	17
222	...	6	4	44	372	10	42	468	8	119	7	18
173	...	20	1	69	1	59	2	24	319	7	28	378	5	180	1	120	16	19
390	...	20	1	60	1	45	1	45	385	22	15	467	4	150	1	760	6	20
436	8	...	1	80	1	70	1	51	591	39	104	785	8	269	1	400	...	21
626	...	27	1	84	1	78	1	45	1015	25	60	1145	7	648	13	22
301	13	...	1	68	1	113	1	33	445	7	43	528	7	235	1	414	7	23
491	45	...	1	120	1	110	1	59	714	13	65	851	9	500	30	24
131	4	...	1	49	1	43	1	26	311	...	34	371	4	161	1	200	7	25
243	...	6	1	68	1	87	1	47	454	54	47	602	5	193	7	26
174	...	5	4	50	265	21	...	336	3	37	1	130	3	27
194	...	6	1	65	1	39	2	29	384	3	36	452	2	73	2	118	7	28
333	8	...	1	50	1	82	1	25	434	54	26	539	4	190	1	496	16	29
171	2	78	1	18	1	20	146	...	22	188	1	42	2	30
163	...	7	1	50	1	28	276	6	12	322	1	20	31
296	9	7	74	446	520	32
247	14	...	1	145	1	45	4	39	307	14	30	390	9	195	1	250	15	33
770	70	...	1	115	1	30	1	30	720	50	100	900	10	500	50	34
266	31	...	1	122	1	38	1	30	443	28	38	539	3	198	34	35
106	24	...	1	109	1	58	1	10	147	20	51	228	12	36
684	12	...	1	95	1	105	1	67	862	149	83	1161	1	700	18	37
311	5	...	1	50	1	40	1	32	325	34	33	424	4	69	1	12	10	38
251	...	7	1	89	1	50	1	23	344	25	45	437	4	151	1	250	4	39
169	8	...	1	60	1	45	1	34	331	25	88	478	8	121	40
109	3	...	1	33	1	90	1	24	208	10	25	267	2	95	5	41
149	8	...	1	103	1	75	1	23	243	15	32	313	4	98	12	42
153	...	38	1	120	3	43	396	35	120	591	3	60	2	180	4	43
203	22	...	2	90	3	42	292	16	16	350	1	32	26	44
105	...	30	2	61	3	38	256	...	61	364	4	75	4	45
134	4	...	1	50	1	70	1	27	160	23	25	235	3	50	6	46
168	...	3	1	36	1	120	1	36	275	30	47	388	2	65	4	47
373	...	21	2	41	1	30	4	60	303	14	24	401	1	110	9	48
507	23	...	2	134	1	42	2	53	265	3	42	363	3	65	2	472	...	49
318	22	45	470	...	50	565	1	110	10	50
340	...	32	1	98	1	70	1	33	449	23	47	552	3	232	13	51
292	21	...	1	97	1	50	2	40	376	7	55	478	4	136	12	52
110	...	8	1	32	1	15	128	...	20	163	1	172	1	53
117	...	9	1	35	1	40	1	27	259	12	60	331	3	81	54
259	...	19	1	25	1	20	1	13	330	40	65	448	2	142	1	55
244	13	...	1	59	1	50	1	16	263	...	23	302	3	130	21	56
308	14	...	1	69	1	29	1	37	359	22	24	442	8	191	1	510	14	57
70	...	6	1	55	2	23	159	...	16	198	3	39	1	58
414	28	...	1	58	1	67	2	37	348	32	45	462	4	195	2	284	31	59
83	3	...	1	40	3	30	245	...	4	279	7	125	4	60
402	...	20	1	142	1	72	1	30	385	72	60	547	5	210	7	61
375	17	...	1	144	1	52	1	43	628	32	69	772	13	421	1	200	22	62
171	36	...	1	71	1	18	236	...	22	276	3	156	21	63
385	17	1	26	502	94	16	638	4	235	22	64
273	56	...	2	56	2	28	153	22	20	223	6	59	34	65
197	...	7	1	32	1	41	1	38	1	25	303	125	55	508	3	93	9	66
83	83	1	9	65	74	3	30	67
164	2	...	1	107	1	16	1	46	1	34	201	30	30	295	3	73	68
86	1	...	1	36	1	17	71	...	15	103	2	40	1	51	3	69
287	20	...	1	45	1	40	1	35	386	35	44	500	4	125	1	595	11	70

CONFERENCE- PROCEEDINGS, 1913.

FIELD OF LABOR.	NAME OF PREACHER.	Number churches organized.	MEMBERS.						
			At beginning of year.	Received by profession of faith.	Received by letter.	Total in church during year.	Lost by Letter.	Loss by Removal.	Total loss.
71 Reading, Trinity,	I. N. Seldomridge,	1	334	4	7	345	83	152	135
72 Reading, Salem,	D. D. Buddinger,	1	366	22	10	398	8	83	91
73 Refton,	C. G. White,	2	207	4	9	220	11	3	14
74 Royalton,	J. F. Smith,	1	127	4	5	136	5	6	11
75 Schuylkill Haven,	D. D. Brandt,	1	203	10	213	2	1	3
76 Schafferstown,	H. H. Fertig,	1	71	71	10	10
77 Shamokin,	A. S. Beckley,	1	421	111	4	536	8	48	56
78 Shamokin Circuit,	J. F. Brown,	3	309	34	5	348	1	23	24
79 Sinking Spring,	P. F. Roberts,	1	99	99	2	2
80 Steelton,	E. A. G. Bossler,	1	661	54	2	717	22	24	46
81 St. John's,	M. H. Jones,	1	323	4	5	332	11	7	18
82 Sunbury,	C. A. Mutch,	2	276	6	9	291	6	36	42
83 Tower City,	Norman Fake,	2	137	28	2	167	10	10
84 Union,	O. G. Romig,	3	215	11	5	231	7	19	26
85 Valley View,	P. M. Haldeman,	5	386	93	479	34	34
86 Williamstown,	R. E. Morgan,	1	107	6	113
Toats,	152	21598	1622	546	23766	556	1360	1916

CONFERENCE PROCEEDINGS, 1913.

MEMBERS.			SOCIETIES.					SUNDAY-SCHOOL.												
Members end of year.	Increase.	Decrease.	Young People's Societies.	Members.	Junior Societies.	Members.	Brotherhoods.	Members.	Sunday schools.	Teachers and of-ficers.	Scholars in main school.	Scholars in home department.	Members on cradle roll.	Total enrollment.	No. adult Bible classes.	Scholars in adult Bible classes.	Sunday-school li-braries.	Volumes in li-braries.	Added to church from S. S.	
210	124	1	50	1	40	1	18	284	18	320	8	95	71
307	59	1	61	1	67	1	59	400	5	493	2	119	24	72
206	1	2	62	1	15	2	24	81	8	137	4	39	73
125	2	1	45	1	60	1	19	240	14	273	1	74	6	74
210	7	1	103	1	45	1	52	1	21	253	12	48	339	4	130	1	150	9	75
61	10	1	9	165	165	1	43	76
480	59	1	58	1	150	1	87	1	42	500	20	50	612	7	180	1	175	70	77
324	15	3	195	1	140	1	15	3	53	425	9	67	554	1	30	2	125	11	78
97	2	1	20	1	15	1	12	38	50	2	25	1	25	79
671	10	1	95	1	92	1	70	794	26	76	956	6	415	50	80
314	9	1	27	184	46	257	3	69	2	81
249	27	1	41	2	37	346	7	50	440	1	155	7	82
157	20	2	43	223	83
205	10	2	87	3	49	299	380	6	150	2	539	10	84
445	59	5	237	5	115	5	88	704	5	75	872	2	50	91	85
113	6	1	48	1	37	1	16	197	32	245	2	43	6	86
21850	963	711	89	5534	63	3427	5	238	145	2874	28470	1854	3396	35240	308	10241	41	8702	1025	..

CONFERENCE PROCEEDINGS, 1913.

LITERATURE.

FIELD OF LABOR.

	Religious scope.	Tele- scope.	Watchword.	Friend for Boys and Girls.	Otterbein Teacher.	Otterbein Adult Quarterly.	Otterbein Senior Quarterly.	Otterbein Intermediate Quarterly.	Otterbein Home Dep. Quarterly.	Weekly Bible Lesson Leaves.	Lessons for Our Juniors.	Graded Series.			Woman's Evangel.	Conference Herald.
												Beginners' Stories.	Prim'y Pupils Stories.	Junior Hand Books.		
1 Allentown, Linden St.,	7	25				18		150				20	20		20
2 Allentown, Sixth St.,	1	5	10	10			50	60	81		100					19
3 Annville,	39	24	50	17	200	190	90	35				40	40		64	31
4 Avon,	12	23		30	240			95			75					19
5 Belle Grove,	23	3	20	23		200	130	10	20	105						6
6 Berne,	29	6	70	28		186	113	7		30						55
7 Birdsboro,	3		11		45		15	3		32						6
8 Catawissa,	6	34		18	57	100	145	65								
9 Centerville,	10	6	3	90	90	210	85								13	
10 Chamber Hill,	6					35	20			25						
11 Coatesville,	3		25	12		50	60			25					10	
12 Columbia,	13	30		35		375			150							
13 Cressona,	6	14														
14 Denver,	10	11	69	10	25	70	15					30	20	24	7
15 Elizabethtown,	10	7		10		100	30	25	60	60	20	32	59	80	49	
16 Ephrata,	14	60	135	18		170	50	76			15	55	45	23	
17 Florin,	1					80	45	30		40					9	
18 Grantville,	12			17		245	40	10	10	85						
19 Halifax,	2	6				240	50			47					23	
20 Harrisburg, First,	24			8	60	150		20			25	25		73		
21 Harrisburg, Otterbein,	30	23		40		425		40		150				17		
22 Harrisburg, Derry St.,	41	24			32	675		25			65	75		67	46	
23 Harrisburg, State St.,	9	35		32	200	120	20	20	20	75				18	18	
24 Harrisburg, Sixth St.,	28	35		30		325	210	18	150	150				28	92	
25 Hershey,	20	11		12	95	85			10	70				9		
26 Highspire,	20	20		25	75	225	80	60			45	45		26		
27 Hillsdale,	10	12		15	75			80						4	27	
28 Hopeland,	10	19	1	5		165	95	25	12					6	50	
29 Hummelstown,	30	152	30	12	125	135		60		30	40	36		46	64	
30 Intercourse,	9			12		59		20						5		
31 Iona,	9	30				160	97	6	20	20				2	35	
31 Jacksonsville,	3	20				216	85			76				5	77	
33 Jonestown,	15	32	36	20	21	189	260	14	48	48	12			8		
34 Lancaster, Covenant,	19	5			125	200	150	50	20	65	10			80		
35 Lancaster, North Queen St.,	34	20		15		170	105	28	50	20				28		
36 Lancaster, Laurel St.,						142	175			48						
37 Lebanon, Salem,	25	45		38		480	90	135						20		
38 Lebanon, Trinity,	32	10				175		30			18	36	55	30		
39 Lebanon, Memorial,	16	28		25		225	75	25		50				28		
40 Lebanon, West,	1	30		3		180	50	25			35	35		25	17	
41 Lebanon, Bethany,	11	14		11		145	35	10	65	65					23	
42 Lebanon, Hebron,	2	21				172	70	15			55			1	19	
43 Lebanon, Pleasant Hill,	4	20		15	80	100	140	35	60					5	38	
44 Lebanon Circuit,		25		7	18	168	35								28	
45 Linglestown,	6			6	50	75	55				60			7	30	
46 Lititz,	5	19	50		50			22	25	25	8		6	24	31	
47 Lykens,	5	4	50	12		125	50	30			39	47	30	4		
48 Lykens Circuit,	18	35		21	70	105		14		70				29		
49 Manheim,	23	10		10		100	50	3			21	11	25	6		
50 Manor,	4	22		12		325	200			100						
51 Middletown,	18	7		13		218	50	25		70				24		
52 Millersburg,	21	12		72		940	200	48	100	260						42
53 Mont Clare,	1		60			60	36		30	30						6
54 Mt. Carmel,	5	1		18		90	55	15		65				23	20	
55 Mt. Joy,	19	75	60									78	102		41	
56 Mountville,	27		30	8		175				50	50			20	27	
57 Myerstown,	20	34		5	1	250	35	20	50	30	35		30	40	37	
58 Neffsville,	5	10			30	75	70			18				2	34	
59 New Holland,	30	33	95	6	110	125	41	34		48				6		
60 Northampton Circuit,	6	9		5	60	165			12	50				10		
61 Oberlin,	22	26		20	110	100	80	80	10		35	15	20	35	85	
62 Palmyra, First,	23	9				375	40	30		40				34	55	
63 Palmyra, Second,	11	16		12		150	50			30				28		
64 Penbrook,	10			24		300	125	75	100	100						
65 Pequea,	10		170				220		38	120						
66 Philadelphia, Mt. Pisgah,	7	1	125	6	30			100	60	100				10	16	
67 Philadelphia, West,	5		25	8		60				25						

CONFERENCE PROCEEDINGS, 1913.

FINANCE.

Pastor's salary paid by charge.	Missionary appropriation.	Presents received.	Collected for local current expenses.	For church and parsonage build-ings.	Collected for local Sunday-school purposes.	Collected for Home Mis-sions.	Special for Home Mis-sions.	
\$1,200 00			\$550 00	\$1,301 17	\$195 20	\$56 54		1
228 00	\$750 00	35 00	372 84	1,001 67	262 96	17 50		2
1,300 00		10 00	1,130 06	14,473 52	277 83		100 00	3
820 00		40 00	395 55	100 00	200 00	44 05		4
575 00		20 00	384 78		324 00	30 00		5
714 00		141 95	267 98		412 67	44 32		6
622 33	100 00	56 31	171 53	335 00	77 18	4 00		7
715 00		25 00	250 00		300 00	22 50		8
628 60			264 65	605 00	292 94	5 60		9
270 00			43 04					10
475 00	475 00		134 00	465 00	127 85	10 00		11
1,500 00			1,139 54	550 00	445 32	92 76		12
844 00		89 54	169 17		411 03	28 70		13
853 10	50 00	10 00	324 17	415 00	161 24	16 00		14
870 00		40 00	285 00	505 00	280 00	50 00		15
1,050 00		20 00	617 64	471 06	340 17	48 00		16
500 00	100 00		161 01	427 51	171 17	23 38		17
562 00		44 00	281 00		200 00	10 00		18
619 00		12 00	394 80	338 00	176 08	41 64		19
1,500 00			919 90	1,000 00	460 52	25 00		20
1,440 00			964 48	616 25	416 67	60 00		21
1,800 00			1,510 41	5,621 91	647 76	118 30		22
1,259 00		14 00	363 30	500 00	120 04	50 55		23
1,440 00		50 00	2,058 97	6,528 29	247 77	100 00		24
1,200 00		89 40	392 26	3,989 04	341 22	35 00		25
1,030 00		100 00	444 26	810 67	247 81	75 93		26
510 00		14 25	318 25		173 50	26 25		27
732 00		62 00	458 52	366 00	285 61	58 00		28
1,175 00		75 00	1,045 00	3,129 00	325 00	100 00		29
760 00			434 00		75 00	15 30		30
796 07		55 00	152 97	145 00	251 68	41 25	5 00	31
600 00		24 00	147 00	90 00	264 00	11 00		32
685 00		90 00	360 00	300 00	260 00	11 00		33
1,700 00		100 00	782 00	3,000 00	350 00	200 00		34
792 00		25 00	786 55	1,122 35	227 73	78 46		35
100 00			378 00		127 50			36
1,425 00		100 00	3,536 21		599 00	82 99		37
1,600 00			1,196 14	1,347 30	555 09	85 00		38
968 00			438 68	832 17	172 12	77 00		39
500 00		22 85	151 00		332 34	15 73		40
660 00	200 00	25 00	193 23	754 64	159 94	22 00		41
200 00	500 00	31 00	582 54	669 00	129 86	20 00		42
700 00		30 00	418 92	63 50	547 03	20 54		43
413 60		106 00	310 06		153 52	22 00		44
530 00		17 00	237 68				2 00	45
732 00		14 00	24 35	216 89	148 87	22 37		46
870 00		30 00	185 62	872 74	167 92	21 69		47
900 00			356 00	1,542 00	510 00	15 00	59 00	48
1,044 00		56 00	736 28	1,451 96	520 84	20 00		49
600 00		30 00	860 00		400 00	10 00		50
1,050 00		60 00	742 76		394 15	35 00	54 05	51
621 35		42 00	281 15	1,167 87	145 23	71 09		52
500 00		25 00	246 45		174 90	20 00		53
880 00		65 00	204 68	748 97	177 14	4 00		54
950 00		30 00	452 99		448 80	21 75		55
1,400 00		35 00	510 00	150 00	310 00	75 00	25 00	56
1,150 00		12 00	576 61	4,000 00	315 37	43 10		57
356 70		11 00	173 45	239 00	227 29	20 00		58
850 00		158 00	907 09		167 92	84 91		59
178 00			276 00		272 50	16 16		60
1,060 00		40 00	471 65	1,381 85	293 88	35 00		61
1,100 00		30 00	1,599 62	496 00	975 01	40 00		62
870 00		5 00	323 14	1,647 47	103 95	44 00		63
1,080 00			1,336 01	818 90	300 93	30 50		64
656 00		62 00	382 00	389 00	90 29	24 36		65
880 00		55 00	490 39	1,838 84	259 44	40 00		66
			107 75			5 00		67

CONFERENCE PROCEEDINGS, 1913.

FIELD OF LABOR.	LITERATURE.														
	Religious Tele- scope.	Watchword.	Friend for Boys and Girls.	Otterbein Teacher.	Otterbein Adult Quarterly.	Otterbein Senior Quarterly.	Otterbein Interme- diate Quarterly.	Otterbein Home Dep. Quarterly.	Weekly Bible Les- son Leaves.	Lessons for Our Juniors.	Graded Series.			Woman's Evangel.	Conference Herald.
											Beginners' Stories.	Primary Pu- pil's Stories.	Junior Hand Books.		
68 Pine Grove,	10	21	8	112	30	30	65	15	17
69 Pottstown,	8	60	30
70 Reading, Zion,	33	30	24	100	75	36	75	27	42
71 Reading, Trinity,	5	15	18	100	35	33	45	24
72 Reading, Salem,	8	39	30	140	10	60	24	51
73 Refton,	4	20	8	45	30	12	1	18
74 Royaltown,	3	12	150	75	40	40	5	15
75 Schuylkill Haven,	14	24	125	11	100	60	25	13	20	20	20	10
76 Schafferstown,	40	50	10
77 Shamokin,	44	20	18	300	75	20	100	20	118
78 Shamokin Circuit,	8	23	18	25	203	141	9	110	146	10	75
79 Sinking Spring,	2	10	35	10	15	9
80 Steelton,	26	145	38	350	140	30	145	50	85	46	51
81 St. John's,	7	1	7	70	60	15	25	15	25	4
82 Sunbury,	15	5	12	128	128	68	20	9	20
83 Tower City,	6	8	135	45
84 Union,	5	36	20	220	75	25	5	12
85 Valley View,	30	50	37	360	28	5	195	45	45	35	15
86 Williamstown,	7	13	8	48	40	18	1
Totals,	1146	1455	1395	1178	2252	13811	4354	1732	1783	3343	851	845	491	1338	1372

CONFERENCE PROCEEDINGS, 1913.

FINANCE.

Pastor's salary paid by charge.	Missionary appro- priation.	Presents received.	Collected for local current expenses.	For church and parsonage build- ings.	Collected for local Sunday-school purposes.	Collected for home missions.	Special for home missions.	
716 00	4 00	501 05	384 35	18 50	68
355 51	20 00	257 11	121 99	2 86	69
1,275 00	57 50	1,992 55	1,398 19	246 24	102 91	70
1,247 00	759 75	4,350 00	411 32	50 00	71
948 00	17 00	785 00	1,327 48	1,487 23	71 00	72
880 00	36 00	161 91	870 06	79 87	39 25	73
600 00	15 00	154 15	400 00	313 58	20 00	74
1,200 00	200 38	688 81	1,250 14	380 51	75
187 71	120 25	353 21	27 28	10 25	76
1,260 00	950 00	1,180 00	112 00	100 00	77
796 00	85 00	281 66	627 90	132 20	73 75	78
265 00	25 00	800 00	26 00	79
1,325 00	140 00	1,578 95	472 95	248 65	80
990 00	75 00	250 47	273 50	286 76	26 83	81
616 20	30 00	137 92	1,066 31	158 84	14 25	82
536 75	83 49	221 20	119 94	22 90	83
575 00	50 00	154 00	450 00	211 80	25 00	84
884 00	50 00	426 17	700 41	537 00	50 00	85
698 50	20 00	284 96	144 22	5 00	86
\$71,945 42	\$2,165 00	\$3,362 92	\$48,036 95	\$82,729 13	\$24,072 86	\$3,488 37	\$345 05	...

CONFERENCE PROCEEDINGS, 1913.

FIELD OF LABOR.	FINANCE.					
	Collected for foreign missions.	Special for foreign missions.	Woman's Missionary Association.	Church erection.	Church erection special.	Parsonage erection.
1 Allentown, Linden St.,	\$75 00		\$65 00	\$24 00		
2 Allentown, Sixth St.,	35 00		13 46	7 00		
3 Allentown,	196 07		626 00	41 00	100 00	
4 Avon,	117 00		110 00		3 85	
5 Belle Grove,	60 00		43 00	10 00		
6 Belle,	86 50	50 00	84 00	18 00		
7 Brinsford,	11 32				8 30	
8 Catawissa,	25 00			12 00		
9 Centerville,	15 00		94 68	7 06		
10 Chamber Hill,						
11 Coatesville,	20 00		43 00	5 00		
12 Columbia,	204 78		140 59	12 50		
13 Cressona,	31 27		70 00	14 30		
14 Deliver,	20 57		20 50			
15 Elizabethtown,	96 79		183 34	15 64		
16 Ephrata,	280 00		145 91	10 00		
17 Firth,	57 60		62 38		5 00	
18 Grantville,	25 00		2 00			
19 Hanftax,	78 00		70 28		20 00	
20 Harrisburg, First,	100 00		680 00		5 00	
21 Harrisburg Overlein,	101 56		166 72	5 00		
22 Harrisburg, Perry St.,	500 00		214 50	51 00		5 00
23 Harrisburg, State St.,	56 90		189 97		5 00	
24 Harrisburg, Sixth St.,	134 35		91 59		50 00	
25 Hershey,	70 00		37 75	12 50		
26 Highspire,	78 50		191 67	17 90	5 00	
27 Himsdale,	30 25		13 00		4 00	
28 Hopeland,	110 00		12 50	12 00		
29 Hummelstown,	200 00		188 00	32 50		
30 Intercourse,	5 81		33 67		5 10	
31 Iona,	82 50			16 50		
32 Jacksonville,	20 00		6 50	11 00		
33 Jonestown,	4 60		35 00	3 00		
34 Lancaster, Covenant,	750 00		556 64	70 00		
35 Lancaster, North Queen St.,	74 27		155 93	26 53		
36 Lancaster, Laurel St.						
37 Lebanon, Salem,	433 19		125 66	36 00		
38 Lebanon, Trinity,	179 50		290 25	35 00		
39 Lebanon, Memorial,	123 20		121 25	14 00		
40 Lebanon, West,	32 54		99 04			
41 Lebanon, Betnany,	30 00			5 22		
42 Lebanon, Hebron,	40 00			10 00		
43 Lebanon, Pleasant Hill,	18 01		36 60	4 50		
44 Lebanon Circuit,	40 00		45 85	7 00		
45 Linglestown,	3 50		35 00	1 00		
46 Lititz,	62 63		154 20	7 50		
47 Lykens,	54 28		22 70	5 60		
48 Lykens Circuit	25 00		131 38			
49 Manheim,	56 13		55 95	28 00		
50 Manor,	20 00			5 00		
51 Middletown,	100 00			22 00	5 00	
52 Millersburg,	77 75					
53 Mont Clare,	40 00					
54 Mt. Carmel,	5 00		41 00	1 00		
55 Mt. Joy,	65 00					
56 Mountville,	200 00		246 13	20 00		
57 Myerstown,	507 22		207 92			
58 Neffsville,	46 03		19 00	8 00		
59 New Holland,	83 32	28 62	84 85		5 00	
60 Northampton Circuit,	30 00		26 00			
61 Oberlin,	128 00		172 91		15 00	
62 Palmyra, First,	95 00		104 04	20 00		
63 Palmyra, Second,	2 00			7 00		
64 Penbrook,	115 50		218 20			
65 Pequea,	24 36			15 00		
66 Philadelphia, Mt. Pisgah,	60 00		90 08		10 00	
67 Philadelphia, West,	5 00					

CONFERENCE PROCEEDINGS, 1913.

FINANCE.

Y. P. S. C. E. general fund.	Brotherhood gen- eral fund.	Children's Day of- fering.	Conference Collec- tions.	Quincy Orphan- age.	West Philadel- phia.	Bonebrake Theo- logical Semi- nary.	Lebanon Valley College.	Bible Cause.	Total for all pur- poses.
		\$6 50	\$220 00	\$5 00	\$103 00	\$65 00			\$3,866 41
		2 70	25 00	5 00					2,006 13
		16 75	425 04	132 46	62 00	26 00			18,916 73
			125 00	3 00			5 00		1,963 45
			240 00	24 00	160 63				1,871 41
			135 00	93 00			16 50		2,063 92
			100 00	5 35					1,391 32
			10 00		30 29				1,369 79
			83 07	6 55					2,003 15
			41 50						354 54
			55 00						1,334 85
			400 00	86 00	490 56		19 00		5,081 05
			105 00	8 50	31 10				1,802 61
		5 45	125 00	6 92	29 00				1,986 95
		7 31	180 00		86 65		16 72		2,627 05
			205 00		127 52				3,315 30
			110 00	5 00	10 00				1,533 05
			200 00		16 10				1,340 10
		5 00	160 00	15 59			20 00		1,831 31
			400 00	10 75	75 00				5,176 17
		10 00	370 00	5 00	17 62		5 00		4,178 60
	11 00	8 05	430 00	46 25	107 07	20 00			11,091 25
		9 57	125 00	10 18	48 60		21 20		2,733 31
		5 00	160 00	18 50			10 00		10,894 47
			90 00						6,257 17
			215 00	20 00	88 30		44 00		3,169 04
			150 00						1,239 50
			185 00	12 00	125 00		40 00		2,458 63
			255 00	45 00	50 00	40 00			6,659 50
			42 00	10 00					1,350 88
			130 00	22 22	120 57		3 18		1,825 87
			115 00	13 25					1,301 75
			85 00				10 00		1,872 05
10 00	8 50	19 95	475 00		183 21	12 25		10 00	8,164 10
	5 00	10 00	130 00	19 25	49 90				3,487 97
			10 00						615 50
			506 00						6,843 05
		3 50	330 00	75 00	30 25	23 99	50 00		5,801 02
			200 00	16 10	121 50		10 60		3,094 62
8 26			75 00	120 00		5 45			1,362 21
			100 00	14 11		2 00			1,966 14
		3 50	60 00			3 75			1,749 65
			130 00	20 00	24 20		5 00		2,018 30
			100 00						1,190 03
25 94			100 00		40 00		25 00		1,800 00
			100 00	13 50	38 85		26 20		1,626 36
			175 00	13 78	68 92				2,534 75
			348 76						3,887 14
			201 00		186 00		49 00		4,201 16
		3 00	180 00						2,048 00
			210 00	7 00			160 60		3,131 67
			100 00	14 00			15 00		2,537 44
			95 00						1,826 46
			65 00						2,191 79
			200 00		177 56	100 00			2,517 86
		10 00	252 00		207 00				3,015 13
			200 00	128 76	50 00				7,178 98
15 34			85 00	8 00	56 05				1,264 86
			125 00	25 00	165 05				2,826 26
37 00			100 00				25 00		960 66
			7 25	22 35	32 20				3,910 09
		29 76	240 00		159 80		81 20		4,970 43
10 00		10 00	75 00	5 00	126 74				3,143 30
		56 55	240 00	25 00	21 25		127 00		4,120 01
60 00		13 60	170 00				50 00		1,926 61
		4 34	150 00						3,928 09
					78 00				205 75

CONFERENCE PROCEEDINGS, 1913.

FIELD OF LABOR.	FINANCE.					
	Collected for foreign missions.	Special for foreign missions.	Woman's Missionary Association.	Church erection.	Church erection special.	Parsonage erection.
68 Pine Grove,	13 65		31 80		5 70	
69 Pottstown,	3 60				2 45	
70 Reading, Zion,	230 00	45 00	265 17	25 00	13 05	
71 Reading, Trinity,	50 00		202 90		10 00	
72 Reading, Salem,	131 00		158 16		5 05	
73 Refton,	53 00					
74 Royalton,	25 00		13 75	12 00		
75 Schuylkill Haven,						
76 Schafferstown,	8 00				3 00	
77 Shamokin,	223 00		299 26	45 00		
78 Shamokin Circuit,	137 50		57 55	31 50		
79 Sinking Spring,			25 00			
80 Steelton,	253 16		494 00	30 00		
81 St. John's,	21 18		35 60	5 00		
82 Sunbury,	30 00		49 60	5 80		
83 Tower City,	50 00			12 01		
84 Union,	25 00		12 00	10 00		
85 Valley View,	84 69		55 49	3 50		
86 Williamstown,	5 00			5 00		
Total	\$7,690 58	\$123 62	\$8,366 87	\$871 06	\$79 25	\$5 00

CONFERENCE PROCEEDINGS, 1913.

FINANCE.

Y. P. S. C. E. general fund.	Brotherhood gen- eral fund.	Children's Day of- fering.	Conference collec- tion.	Quincy Orphanage.	West Philadelphia.	Bonebrake Theo- logical Semi- nary.	Lebanon Valley College.	Bible Cause.	Total for foreign missions.
813 00			130 00	20 50			5 00		1,830 55
			90 00						961 65
	5 00		250 00	45 45	43 35				5,994 41
			150 00						7,230 97
	6 60		190 00	19 55	98 93		10 00		5,331 54
18 71	14 38		125 00	20 00		10 00			2,183 78
			110 00						1,663 48
			289 70	78 15	35 60				4,336 29
			35 00	16 53					761 23
			245 00	50 00	92 00		68 00		4,624 26
	5 00		200 00		52 18	4 50	10 00		2,533 76
			47 00						1,178 00
	5 00		460 00	167 62	226 40		21 20		5,422 93
	2 00		195 00	10 00	42 98	5 00	15 60		2,234 92
	2 25		85 00						2,151 92
	7 30		125 00	5 00	13 00		10 60		1,187 19
	15 82		100 00	53 00	42 31				1,621 13
			230 00	30 42					3,051 68
			115 00	10 00	56 00		5 00		1,348 68
\$167 44	\$24 50	\$311 13	\$14,656 07	\$1,662 59	\$2,956 97	\$317 94	\$980 60	\$10 00	\$272,189 27

CONFERENCE PROCEEDINGS, 1913.

FIELD OF LABOR.	CHURCH PROPERTY.						Months employed.	Number minutes wanted		
	No. church houses.	Number parsonage.	Value of church-house & grounds.	Debt on church.	Value of parsonage and lot.	Debt on parsonage.				Net value.
1 Allentown, Linden St., ...	1	1	\$28,000	\$9,000	\$5,000		\$2,400	12	40	1
2 Allentown, Sixth St., ...	1		8,300	4,400			3,900	12	35	2
3 Annville,	1	1	80,000	32,000	3,500		51,500	12	3
4 Avon,	1	1	15,000	850	3,000		17,150	12	75	4
5 Belle Grove,	4		10,500				10,500	12	75	5
6 Berne,	3		10,500				10,500	12	60	6
7 Birdsboro,	2	1	4,000		1,000	900	4,100	12	30	7
8 Catawissa,	4	1	6,502		1,450		7,952	12	50	8
9 Centerville,	4		8,000				8,000	12	75	9
10 Chamber Hill,	2		4,000				4,000	12	30	10
11 Coatesville,	1	1	10,350	6,400			3,950	12	11
12 Columbia,	1	1	35,200	2,145	3,750		36,805	12	150	12
13 Cressona,	1½	1	6,500		2,425		8,925	12	50	13
14 Denver,	1	1	10,000	175	2,500	1,975	10,350	12	25	14
15 Elizabethtown,	1	1	12,850		3,200	2,000	14,050	12	60	15
16 Ephrata,	1	1	7,500		4,000	1,520	9,980	12	75	16
17 Florin,	2	1	5,000		1,500		6,500	12	60	17
18 Grantville,	3		10,700				10,700	12	60	18
19 Halifax,	2	1	5,500		1,800		7,300	12	75	19
20 Harrisburg, First,	1	1	30,000	7,000	4,500		27,500	12	80	20
21 Harrisburg, Otterbein, ..	1	1	20,000		3,000		23,000	12	100	21
22 Harrisburg, Derry St., ..	1	1	82,500	33,350	5,500	2,500	52,150	12	150	22
23 Harrisburg, State St., ..	1	1	15,000		3,500	1,800	16,700	12	75	23
24 Harrisburg, Sixth St., ..	1		50,138	27,500			22,638	12	175	24
25 Hershey,	1	1	6,000	750	3,000		8,250	12	75	25
26 Highspire,	1	1	12,000	486	2,000	275	13,239	12	75	26
27 Hillsdale,	4		6,500				6,500	12	60	27
28 Hopeland,	2	1	9,350	945	900		9,305	12	60	28
29 Hummelstown,	1	1	32,500	10,000	2,500		25,000	12	70	29
30 Intercourse,	2	1	9,500	550	1,600		10,550	12	45	30
31 Iona,	2	1	6,700		2,100	1 475	7,325	12	75	31
32 Jacksonville,	7	1	6,600		1,000		7,600	12	75	32
33 Jonestown,	4		20,700	6,234			14,466	12	200	33
34 Lancaster, Covenant, ..	1	1	10,000		3,000		13,000	12	200	34
35 Lancaster, N. Queen St., ..	1		14,485	2,435			12,050	12	80	35
36 Lancaster, Laurel St., ..	1		4,000	1,500			2,500	12	75	36
37 Lebanon, Salem,	1	1	25,925		3,500	700	28,725	12	150	37
38 Lebanon, Trinity,	1	1	32,000		4,000		36,000	12	75	38
39 Lebanon, Memorial,	1	1	11,500		3,100	2,325	12,275	12	60	39
40 Lebanon, West,	1		3,000	50			2,950	12	60	40
41 Lebanon, Bethany,	1	1	4,500		2,000		6,500	12	50	41
42 Lebanon, Hebron,	1		13,463	8,601			4,862	12	65	42
43 Lebanon, Pleasant Hill, ..	1		9,050	1,340			7 710	12	40	43
44 Lebanon Circuit,	3		12,500				12,500	12	90	44
45 Linglestown,	3		7,500				7,500	12	90	45
46 Lititz,	1	1	4,500	500	2,200	700	5,500	12	50	46
47 Lykens,	1	1	4,500		2,500		7,000	12	60	47
48 Lykens Circuit,	5	1	8,000		1,500		9,500	12	75	48
40 Manheim,	2	1	21,500	9,000	5,000	3,000	14 500	12	100	49
50 Manot,	3		12,925				12,925	12	90	50
51 Middletown,	1	1	14,000		1,400		15,400	12	75	51
52 Millersburg,	2		8,000	2,050	6,950		12,900	12	100	52
53 Mont Clare,	1		2,650	690			1,960	12	30	53
54 Mt. Carmel,	1	1	12,000		6,650	5,000	13,650	12	40	54
55 Mt. Joy,	1	1	9,000		2,550	450	11,100	12	50	55
56 Mountville,	1	1	35,000	300	6,000	500	40,200	12	75	56
57 Myerstown,	1	1	27 000		2,700	375	29,325	12	70	57
58 Neffsville,	1		3,000				3,000	12	50	58
59 New Holland,	2	1	12,500		2,500	780	14,220	12	75	59
60 Northampton Circuit, ...	3		7,500	750			6,750	6	25	60
61 Oberlin,	1	1	12,000	1,600	2,500		10,900	12	100	61
62 Palmyra, First,	1	1	27,000	2,000	3,000		28,000	12	50	62
63 Palmyra, Second,	1		11,800				11,800	12	40	63
64 Penbrook,	1	1	7,000		3,500		10 500	12	75	64
65 Pequea,	2	1	4,450	50	1,000		5,400	12	75	65
66 Philadelphia, Mt. Pisgah, ..	1		14,000	3,000			11,000	12	60	66
67 Philadelphia, West,								12	100	67

CONFERENCE PROCEEDINGS, 1913.

FIELD OF LABOR.	CHURCH PROPERTY.							Months employed.	Number minutes wanted	
	Number church-houses.	Number parsonage.	Value of church-house & grounds.	Debt on church.	Value of parsonage and lot.	Debt on parsonage.	Net value.			
68 Pine Grove,	1	1	7,000	1,030	1,500	7,470	12	50	68
69 Pottstown,	1	6,000	6,000	12	35	69
70 Reading, Zion,	1	1	20,000	1,300	15,000	6,500	27,200	12	75	70
71 Reading, Trinity,	1	1	23,500	5,898	3,000	600	20,002	12	50	71
72 Reading, Salem,	1	1	15,000	1,890	2,700	1,850	13,960	12	75	72
73 Refton,	2	1	6,500	400	3,000	1,500	7,600	12	80	73
74 Royalton,	1	5,000	900	4,100	12	30	74
75 Schuylkill Haven,	1	1	11,000	1,370	7,000	16,630	12	70	75
76 Schafferstown,	1	5,000	5,000	12	30	76
77 Shamokin,	1	1	23,500	7,875	3,625	27,750	12	125	77
78 Shamokin Circuit,	3	1	5,200	2,400	1,000	6,600	12	70	78
79 Sinking Spring,	1	5,000	5,000	10	30	79
80 Steelton,	1	25,500	25,500	12	100	80
81 St. John's,	1	1	7,500	3,500	11,000	12	75	81
82 Sunbury,	2	1	20,500	12,120	5,000	13,380	12	75	82
83 Tower City,	2	4,800	208	1,850	6,342	12	70	83
84 Union,	3	6,500	6,500	12	75	84
85 Valley View,	5	15,250	800	1,500	15,950	12	105	85
86 Williamstown,	1	1	4,000	1,800	5,800	12	30	86
	144½	56	\$1,208,888	\$201,567	\$184,400	\$41,850	\$1,150,371	1024	6090	...

SUMMARY OF STATISTICS.

Churches—Number of churches organized, 152.

Ministers—Itinerants (total) 100; local preachers, 32; total, 132.

Members—Beginning of year, 21,598; received by confession of faith, 1,622; received by letter, 546; total in church during year, 23,766; lost by letter, 556; lost by removal, etc., 1,360; total loss, 1,916; members end of year, 21,850; increase, 963; decrease, 711; net gain, 252.

Young People's Societies, 89; members, 5,534; Junior Societies, 63; members, 3,427; brotherhoods, 5; members, 238.

Sunday-schools, 145; teachers and officers, 2,847; scholars in main school, 28,476; scholars in Home Department, 1,874; number on Cradle Roll, 3,396; total enrollment, 35,240; number adult Bible classes, 308; scholars adult Bible classes, 10,241; scholars added to church from Sunday-school, 1,025; Sunday-school libraries, 41; volumes in libraries, 8,702.

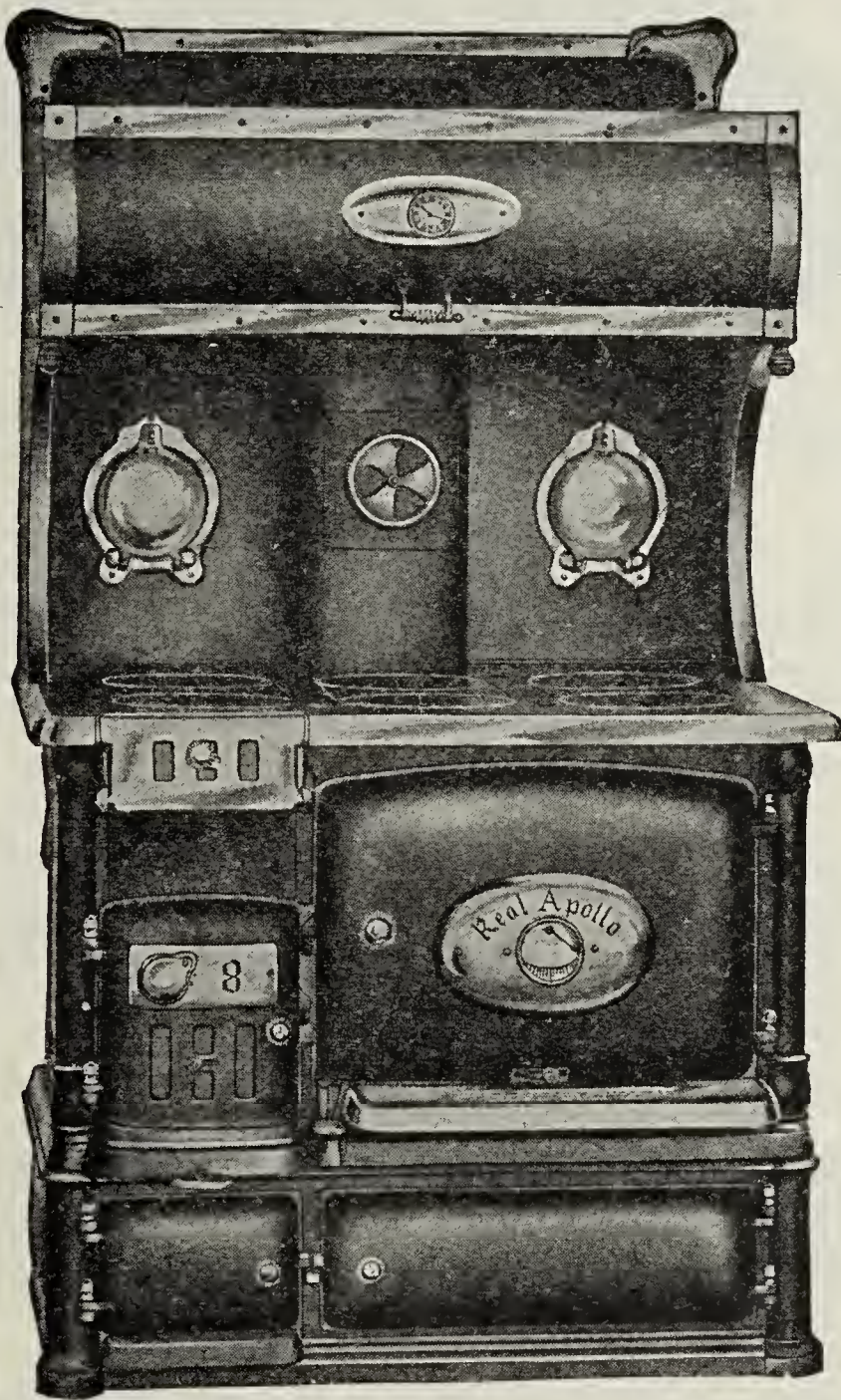
Literature—Religious Telescopes, 1,146; Woman's Evangel, 1,338; Watchword, 1,455; Friend for Boys and Girls, 1,395; Otterbein Teacher, 1,178; Otterbein Adult Quarterly, 2,252; Otterbein Senior Quarterly, 13,811; Otterbein Intermediate Quarterly, 4,354; Otterbein Home Department Quarterly, 1,732; Weekly Lesson Leaves, 1,783; Lessons for Our Juniors, 3,343; Graded Series Beginners' Stories, 851; Primary Stories, 845; Junior Handbooks, 491; Conference Heralds, 2,672.

Finances—Pastors' salaries paid, \$71,945.42; missionary appropriation, \$2,165; presents received, \$3,362.92; local current expenses, \$48,036.95; church and parsonage building, \$82,729.13; local S. S. purposes, \$24,072.86; home missions, \$3,486.37; special for home missions, \$345.05; foreign missions, \$7,690.58; special for foreign missions, \$123.62; Woman's Missionary Association, \$8,366.87; church erection, \$871.06; church erection, special, \$79.25; Y. P. S. C. E. General Fund, \$167.44; Brotherhood General Fund, \$24.50; Children's Day offering, \$311.13; Conference collections, \$14,656.07; Quincy Orphanage, \$1,662.59; West Philadelphia, \$2,956.97; Bonebrake Theological Seminary, \$317.94; Lebanon Valley College, \$980.60; Bible cause, \$10; total for all purposes, \$272,189.27.

Property—Church houses, 144½; parsonages, 56; value of church houses, \$1,208,888; debt on churches, \$201,567; value of parsonages and lots, \$184,400; debt on parsonages, \$41,350; net value, \$1,150,371.

Plainness Pervades All Present House Furnishing

A Plain Range modernizes your kitchen
An Enamel Range beautifies your kitchen



No dirt, no blacking, no drudgery with the use of our
Enameled Ranges

Ask Your Dealer for Plain and Enameled Stoves and Ranges

MANUFACTURED BY

BUCKWALTER STOVE CO.

ROYERSFORD, PA.

MAKERS OF THE ORIGINAL PLAIN RANGE

FOR ALL PURPOSES



CORTRIGHT

A CORTRIGHT ROOF is a permanent roof in every sense of the word. Cortright Roofs laid 26 years ago are as good as new to-day, and the only attention they have had is an occasional coat of paint where the painted goods were used.

CORTRIGHT METAL SHINGLES cannot split, curl or decay like wood shingles, nor crack and fall off like slate. They give satisfaction because special care is taken in their production.

The manufacturers are roof specialists and the roof of the roof specialists is the roof for you, whether for your House, your Church, your School-house or your Public Building.

Our Catalog "Concerning That Roof" tells all about them. Cheerfully sent on request, together with further information.

Cortright Metal Roofing Co.

50 N. 23rd Street

::

PHILADELPHIA, PA.

WE MAKE AND SELL RELIABLE CLOTHING

LEINBACH & BRO.

Leading Clothiers

Cor. 8th and Penn Sts.

READING, PA.

S. F. Engle
President

E. C. Gingrich
Vice-President

Jno. G. Kreider
Sec'y and Treas.

The Valley Trust Company of Palmyra, Pa.

CAPITAL STOCK \$125,000. SURPLUS \$100,000

BANKING AND TRUST BUSINESS

GET IT AT

Established 1820

GROSS' DRUG STORE

IF YOU WANT THE BEST

Pure Drugs, Spices and Household Requisites

DON'T FORGET GROSS' DRUG STORE

EVERYTHING

Belonging to the Drug Business

119 MARKET STREET
HARRISBURG, PA.

ROBERT M. RUTHERFORD, President

W. E. ABERGROMBIE, Vice-President

H. W. STUBBS, Secretary

G. F. ZIMMERMAN, Treasurer

Steelton Trust Company

STEELTON, PENNA.

Receives Money on Deposit Subject to Check, and Transacts a General Banking Business. Allows 3 per cent Interest on Time Deposits. Executes Trusts of Every Kind.

Safe Deposit Boxes for Rent, from \$2.00 per year and upwards, according to size



St. John.



Artist.
& Co.

Fresco-
Painter.
Reading
Pa.



Drawn by B. Imhoff

“ Our great aim was to produce goods of a superior quality — much care being taken to make fine, soft and strong castings, well fitted and so arranged that the very best results in operation could be attained.”

(History of the Reading Stove Works, Orr, Painter & Co., written by Jesse Orr, the founder of this business, a few years before his death.)

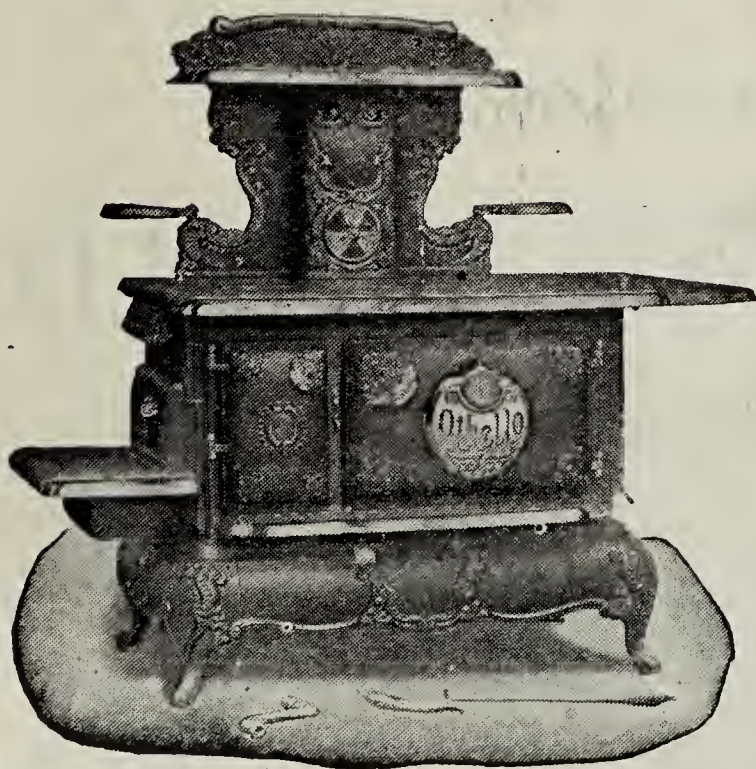


Sunshine and Othello Ranges

have, for forty years, been made according to this working policy.

We make them to-day, with the same care that has always characterized their manufacture.

That's why they are so well and favorably known throughout the entire country.



**THE
READING STOVE
WORKS**

ORR, PAINTER & CO.

Reading :: :: Penna.

THE STIEFF PLAYER - PIANO

The greatest musical invention of the age. A fine high-grade upright piano, always ready to be played in the ordinary manner, but that can, in a moment be adjusted so that anyone can play whatever desired from ragtime to grand opera.

This is entirely unlike ordinary piano players, and far superior. When you possess this instrument, you also have the ability to play it.

LET US TELL YOU MORE
ABOUT IT

CHARLES M. STIEFF
24 N. Second St. :: Harrisburg, Pa.



SUBSCRIBE FOR THE
CONFERENCE HERALD

25 CENTS PER YEAR



Lebanon Valley College

FOUNDED IN 1866

Healthful Location

High Educational Standard

Fine Christian Influence

A FINE campus, which includes the new Ladies' Hall, the new Administration Building, the new Men's Dormitory, the new Engle Music Hall, the new Carnegie Library, and the Power Plant. The Dormitories are heated by steam and supplied with baths and electric lights, and the comfort of the students is looked after carefully.

The College

offers five groups of studies leading to the degrees of Bachelor of Arts. They are:

- THE CLASSICAL GROUP
- THE MATHEMATICAL-PHYSICAL GROUP
- THE HISTORICAL-POLITICAL GROUP
- THE CHEMICAL-BIOLOGICAL GROUP
- THE MODERN LANGUAGE GROUP

Admits men and women to all its classes.

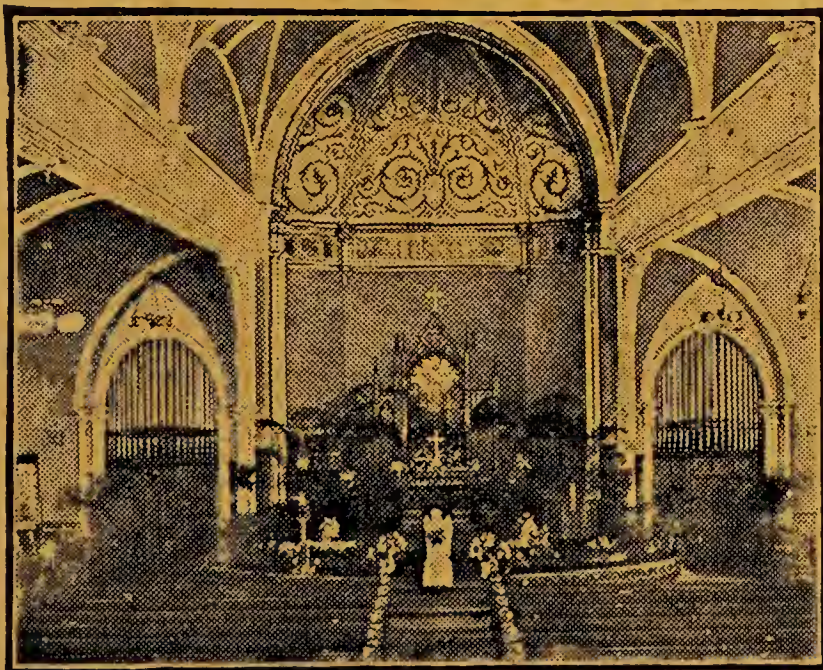
The Academy

is located on separate grounds, and provides a four years' course designed to fit young people for the Freshman class of any college, for teaching and for business. A full equipment of laboratories, biological, chemical, and physical, is provided. Fine, new athletic field. Enrollment last year, 275.

The College also comprises the School of Music, the School of Art, the School of Expression. The religious spirit of Lebanon Valley College is admirable. For Catalogue Address

REV. G. D. GOSSARD, D. D., President, Annville, Pa.

1700 MÖLLER PIPE ORGANS NOW IN USE



We have built 94 in Pittsburg; 96 in New York; 51 in Baltimore; 42 in Philadelphia; 37 in Cincinnati; 18 in Washington, and 22 in Hagerstown, Md.

Builder of the two-manual organs in Lebanon Valley College and St. Paul's U. B. Church, Annville, Pa.; First U. B. Church, Chambersburg, Pa.; St. Paul's U. B. Church, Hagerstown, Md.; Centenary U. B. Church, Steelton, Pa.; Centennial U. B. Church, Frederick, Md.; Scott U. B. Church, Baltimore, Md.; also for a large number of other United Brethren Churches.

Specifications and estimates free on application. Correspondence solicited. For catalogues and full particulars, address

M. P. MÖLLER
Hagerstown, Md., U. S. A.

Second United Brethren Church, 59th and Catherine Sts., W. Philadelphia
REV. S. G. ENCK, D. D., Pastor



GEO. E. SAVAGE :: ARCHITECT
Witherspoon Building PHILADELPHIA

In addition to the above Church Building I have received the following commissions during the year 1913:

Baptist Church, Burlington, N. J.
Second Presbyterian Church,
Pottsville, Pa.

Twelfth U. P. Church, Philadel-
phia.

M. E. Church, Pleasantville, N. J.
Baptist Church, Parkesburg, Pa.
Presbyterian Church, Vineland,
N. J.

M. E. Church, Leonia, N. Y.
Paschal U. P. Church, Philadel-
phia.

Caldwalader Heights M. E.
Church, Trenton, N. J.

S. S. Bldg., St. Mark's Reformed
Church, Easton, Pa.

Reformed and Lutheran Church,
Hecktown, Pa.

Presbyterian S. S. Bldg., Blooms-
burg.

Berean Baptist Church, Philadel-
phia.

M. E. Church, Coatesville, Pa.

Church Work Is My Specialty
My Portfolio of Church Designs Sent on Approval



CHURCH PLANS

Catalogue free to Ministers.

WINDOW PAPER

Send for Circular and Samples.

BENJ. D. & MAX CHAS. PRICE, ARCHITECTS.
ATLANTIC HIGHLANDS, NEW JERSEY.